



ORYX® Collar WR

Version 1.1, 01-05-2017 (English)

ORYX®, passion for passive fire protection

ORYX® is the specialist in passive fire protection for buildings. Thanks to our passionate expertise and extensive product range, ORYX® provides solutions for countless applications in the field of fire-resistant load-bearing structures, fire-resistant compartments and the creation of fire-resistant penetrations. All products and applications have a CE-label and were tested in line with European standards and can therefore be used right across Europe.

Our specialists are always ready to provide you with technical advice and support.

PRODUCT DESCRIPTION

ORYX® Collar WR are strips for creating fire-resistant penetrations in walls and floors. ORYX® Collar WR strips are applied to the wall or floor around plastic pipes, insulated steel pipes or cables. In the event of fire, the strips expand to fully seal the openings to fire, smoke and heat.

CHARACTERISTICS

- CE label for fire-resistant applications
- Tested constructions to fire-resistance performance EI 240 (EN 13501-2)
- Tested in countless constructions in line with European standards EN 1366-3
- Fast and easy to attach with self-adhesive fastening
- Expands rapidly under heat
- Intumescent substrate is resistant to moisture and CO₂
- Invisible when applied in the wall or floor

APPLICATIONS

- Both horizontal and vertical
- For sealing penetrations in load-bearing walls and floors, as well as in lightweight partition walls
- Around penetrations of plastic pipes (PVC, PP, PE)
- Around penetrations of metal pipes with flammable insulation
- Around penetrations of electrical cables
- In combination with other ORYX® fire-resistant sealing products

FITTING GUIDELINES

- The substrate around the pipe must be firm
- The opening in the wall or floor may not be larger than stipulated (see fitting instructions)
- If the opening is larger than stated, it must be filled first with mortar before applying the strips
- Attach the strip around the pipe or cable with self-adhesive fastening and insert into the wall or floor
- The edge of the strip should not be recessed more than 10 mm relative to the surface of the wall or floor
- In floors, only one strip is applied to the underside, in walls one strip will suffice if they are no more than 150 mm thick, but if they are deeper than 150 mm a strip must be fitted to both sides of the wall



PACKAGING AND STORAGE

- Separately packed in suitable plastic bags
- Keep dry at temperatures between +2°C and +30°C

LIMITATIONS

It is the user's responsibility to understand the usage guidelines.

SAFETY REQUIREMENTS

The product does not contain any substances classified in line with Directive 67/548/EEC and Regulation (EC) No. 1272/2008 as stated in the list of hazardous substances of the EGDS. For further information, please refer to the Safety Data Sheet.

DISCLAIMER

The content of this brochure has been compiled with the greatest possible care and is only intended for information purposes. The information contained herein does not constitute a partial or full guarantee or proposal for which we are liable. We reserve the right to change or alter product specifications.

All information about our products and applications can be found at www.oryx.pro



FITTING INSTRUCTIONS

ANNEX A, FIRE-RESISTANCE FOR PENETRATIONS

Characteristics of the product and references to the assessment methods

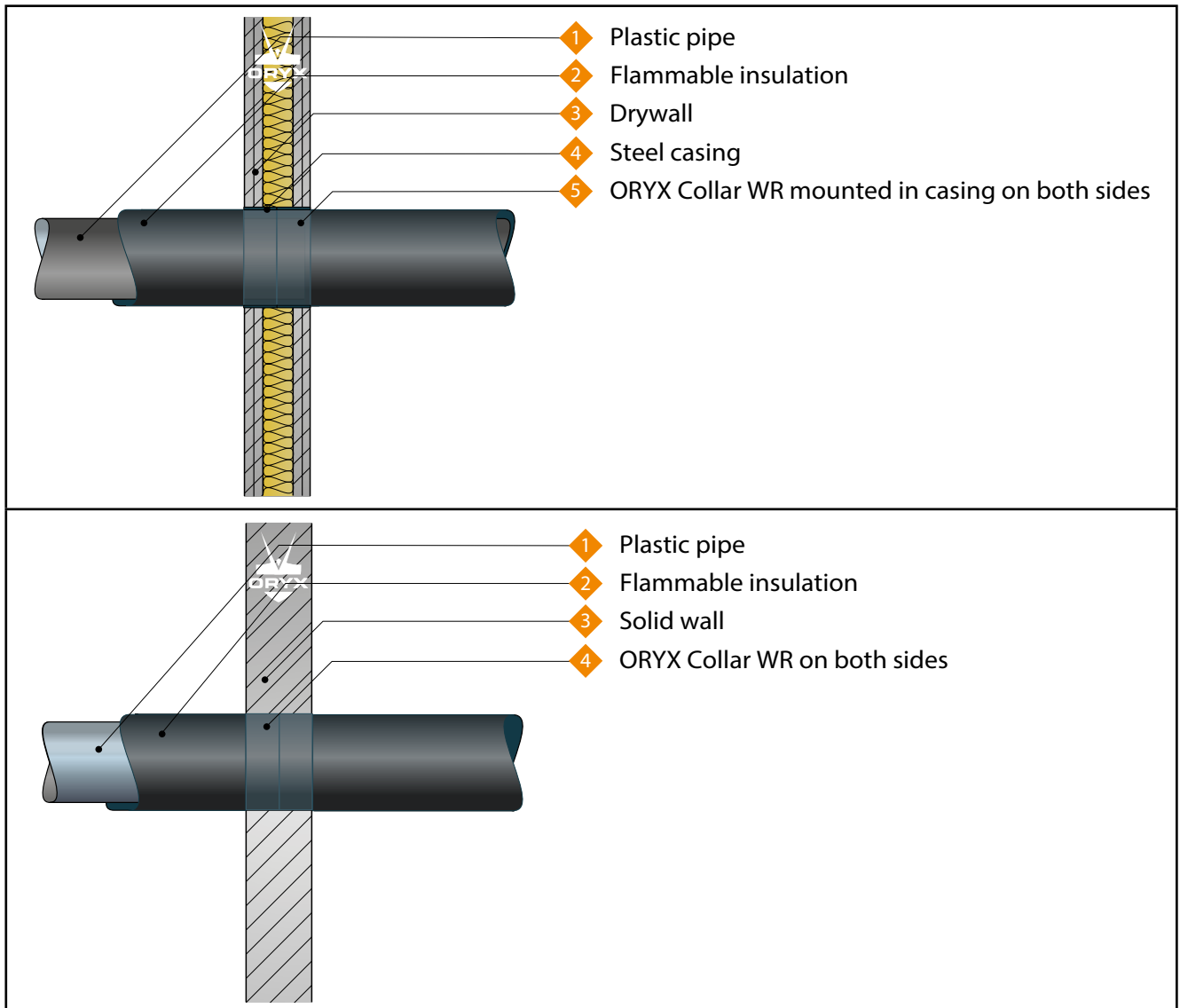
Product type: Pipe wrap		Intended use: Penetration seal	
Minimum construction requirements	Basic requirements	Characteristics	
BWR 1 Mechanical resistance and stability			
-	None	Not relevant	
BWR 2 Safety in case of fire			
EN 13501-1	Reaction to fire	Class F	
EN 13501-2	Fire-resistance	Annex A	
BWR 3 Hygiene, health and environment			
EN 1026:2000	Air permeability (material characteristic)	No characteristic specified	
ETAG 026-2, Annex C	Water permeability (material characteristic)	No characteristic specified	
Manufacturer's declaration	Release of hazardous substances	Usage category: IA1, S/W3 Manufacturer's declaration	
BWR 4 Safety use			
EOTA TR 001:2003	Mechanical resistance and stability	No characteristic specified	
EOTA TR 001:2003	Resistance against denting/movement	No characteristic specified	
EOTA TR 001:2003	Gluing	No characteristic specified	
BWR 5 Noise protection			
EN 10140-2/ EN ISO 717-1	Airborne noise insulation	No characteristic specified	
BWR 6 Energy efficiency and thermal insulation			
EN 12664, EN 12667 or EN 12939	Thermal characteristics	No characteristic specified	
EN ISO 12572 EN 12086	Water-vapour permeability	No characteristic specified	
General aspects relating to use			
EOTA TR 024:2009, clauses 3.1.11 & 3.1.12	Durability and maintenance	Y ₂	
BWR 7 Sustainable use of natural resources			
-	-	No characteristic specified	

Product(s)	Intended use	Level(s) or class(es)	System
Fire-resistant sealing material	For fire compartmentalisation and/or fire safety or fire protection	All	1

A.1 Flexible or solid wall constructions with a wall thickness of at least 100 mm

A.1.1 Penetration seal in drywalls and concrete/brick walls

Penetration seal: Insulated metal and plastic pipes and telecom cables fitted with an ORYX® Collar WR on both sides of the wall





A.1.1.1

Penetrations	Wrap dimensions	Classification
PVC-U pipe in line with EN 1329-1, EN 1452-2 and EN 1453-1		
Diameter 40 mm, wall thickness 2 mm	50 x 1.8 mm	E 120 U/U, E 120 C/U, E 120 U/C, E 120 C/C EI 90 U/U, EI 90 C/U, EI 90 U/C, EI 90 C/C
Diameter 55 mm, wall thickness 2 mm	50 x 1.8 mm	
Diameter 82 mm, wall thickness 3.7 – 6.6 mm	50 x 3.6 mm	EI 90 U/U, EI 90 C/U, EI 90 U/C, EI 90 C/C
Diameter 110 mm, wall thickness 3.7 – 6.6 mm		
Diameter 82 mm, wall thickness 6.6 mm		E 120 U/U, E 120 C/U, E 120 U/C, E 120 C/C EI 90 U/U, EI 90 C/U, EI 90 U/C, EI 90 C/C
Diameter 110 mm, wall thickness 6.6 mm		
Diameter 125 mm, wall thickness 6.6 mm	50 x 7.2 mm	EI 90 U/U, EI 90 C/U, EI 90 U/C, EI 90 C/C
Diameter 160 mm, wall thickness 9.5 mm	50 x 12.6 mm	
Diameter 200 mm, wall thickness 6.2 mm		
Copper with 19 mm thick Armaflex insulation		
Diameter 54 mm, wall thickness 0.8 – 14.2 mm	50 x 3.6 mm	EI 60 C/U
Telecom cables up to 21 mm diameter in bundles up to 100 mm diameter ¹		
Up to 21 mm diameter in bundles up to 100 mm diameter ¹	50 x 3.6 mm	E 120, EI 30
Up to 21 mm diameter in bundles up to 100 mm diameter, packed with 300 mm long single-layer Insulwrap material ²		E 120, EI 90

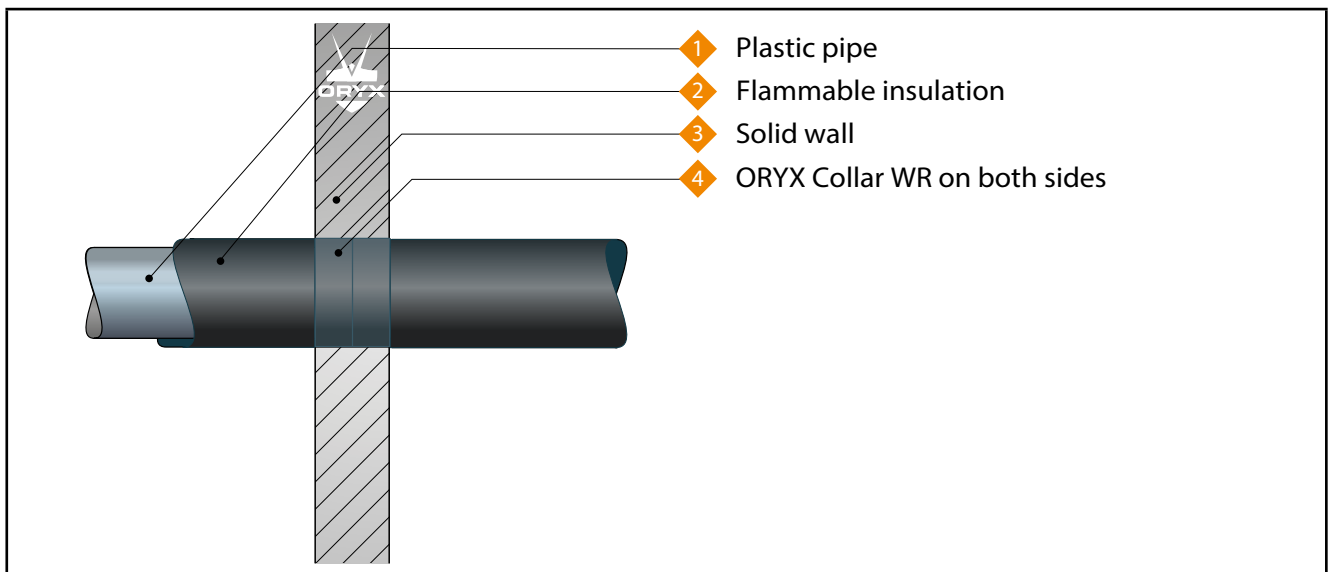
¹ Only required on the side not exposed to fire or on both sides if fire exposure is unknown

² Wrap must fit the cable bundle tightly

A.2 Solid wall constructions with a wall thickness of at least 150 mm

A.2.1 Penetrations in solid walls

Penetration seal: Insulated metal and plastic pipes fitted with an ORYX® Collar WR on both sides of the wall

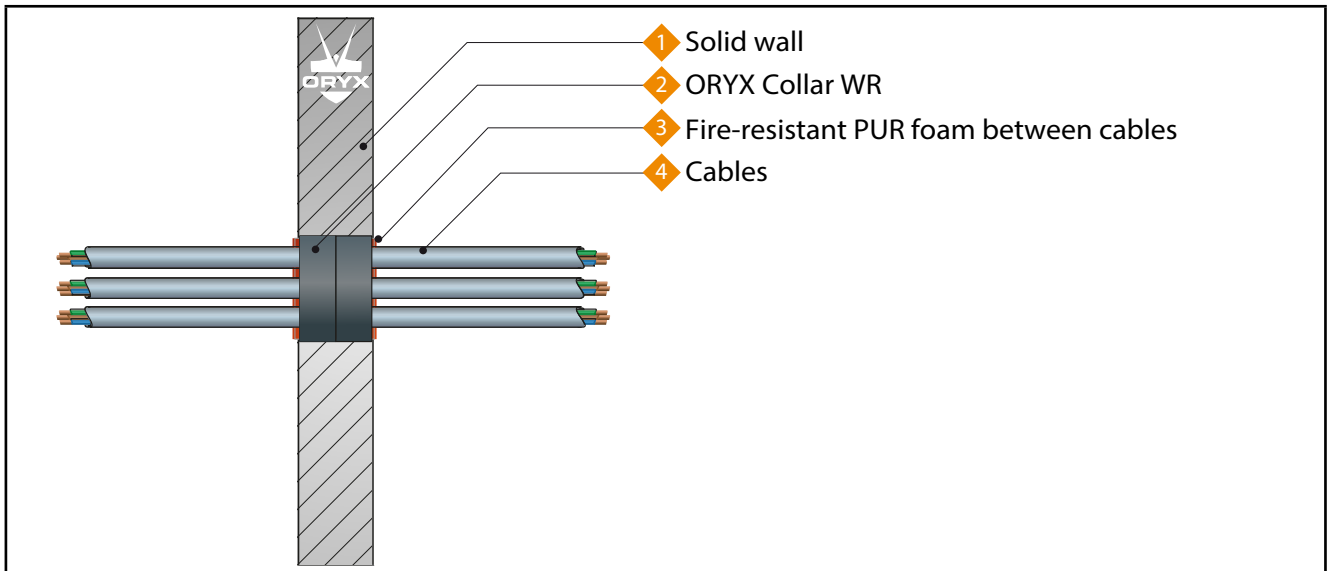


A.2.1.1

Penetrations	Wrap dimensions	Classification
PVC-U pipe in line with EN 1329-1, EN 1452-2 and EN 1453-1		
Diameter 40 mm, wall thickness 2 mm	50 x 3.6 mm	EI 240 C/U, EI 240 U/C, EI 240 C/C
Diameter 55 mm, wall thickness 2 mm		
Diameter 40 mm, wall thickness 3.3 mm		EI 120 C/U, EI 120 U/C, EI 120 C/C
Diameter 55 mm, wall thickness 3.3 mm		
Diameter 82 mm, wall thickness 3.3 mm		
PE pipe in line with EN 1519-1, EN 12201-2 and EN 12666-1, ABS pipe in line with EN 1455-1 and SAN+PVC pipe in line with EN 1565-1 2		
Diameter 40 mm, wall thickness 3.2 mm	50 x 3.6 mm	EI 120 C/U, EI 120 U/C, EI 120 C/C
Diameter 55 mm, wall thickness 3.2 mm		
Copper with 25 mm thick Armaflex insulation		
Diameter 25 mm, wall thickness 0.8 – 14.2 mm	50 x 1.8 mm	EI 120 C/U

A.2.2 Penetrations in solid walls

Penetration seal: Electrical cables fitted with an ORYX® Collar WR, applied in the middle of the aperture in walls with fire-resistant PUR foam



A.2.2.1

Penetrations	Wrap dimensions	Classification
Electrical cables in bundles up to 100 mm diameter ¹		
Up to 20 mm diameter 'C3' electrical cables in line with HD 604.5	75 x 1.8 mm	EI 120
Up to 15 mm diameter 'A3' electrical cables in line with HD 604.5		

¹ Wrap must fit the cable bundle tightly

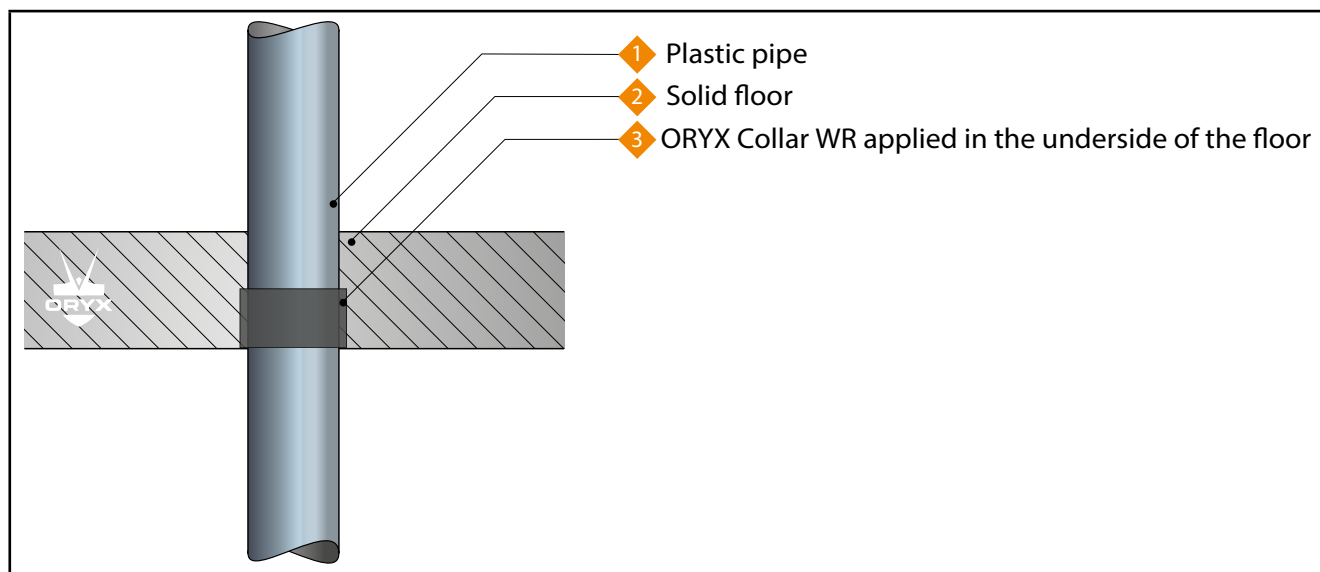
A3 cables – 5 x 1.5 mm² core, XLPE insulation, EVA sleeve

C3 cables – 4 x 95 mm² core, XLPE insulation, EVA sleeve

A.3 Solid floor constructions with a wall thickness of at least 150 mm

A.3.1 Penetrations in concrete floors

Penetration seal: Insulated metal and plastic pipes fitted with an ORYX® Collar WR, applied in the underside of the floor (only side exposed to fire)



A.3.1.1

Penetrations	Wrap dimensions	Classification
PVC-U pipe in line with EN 1329-1, EN 1452-2 and EN 1453-1		
Diameter 40 mm, wall thickness 3 mm	50 x 1.8 mm	EI 240 U/U, EI 240 C/U, EI 240, U/C, EI 240 C/C
Diameter 50 mm, wall thickness 3 mm	50 x 3.6 mm	
Diameter 55 mm, wall thickness 2 mm	50 x 1.8 mm	E 120 U/U, E 120 C/U, E 120 U/C, E 120 C/C
Diameter 82 mm, wall thickness 3.3 mm	50 x 3.6 mm	EI 60 U/U, EI 60 C/U, EI 60 U/C, EI 60 C/C
Diameter 55 mm, wall thickness 3 mm	50 x 5.4 mm	EI 240 C/U, EI 240 U/C, EI 240 C/C
Diameter 82 mm, wall thickness 3 mm		
Diameter 100 mm, wall thickness 3 mm		
Diameter 110 mm, wall thickness 6.6 mm	50 x 3.6 mm	E 30 U/U, E 30 C/U, E 30 U/C, E 30 C/C EI 15 U/U, EI 15 C/U, EI 15 U/C, EI 15 C/C
Diameter 110 mm, wall thickness 3.2 mm	75 x 10.8 mm	EI 240 C/U, EI 240, U/C, EI 240 C/C
Diameter 160 mm, wall thickness 3.2 mm		
Diameter 160 mm, wall thickness 9.5 mm	50 x 7.2 mm	EI 30 U/U, EI 30 C/U, EI 30 U/C, EI 30 C/C
PE pipe in line with EN 1519-1, EN 12201-2 and EN 12006-1, ABS pipe in line with EN 1455-1 and SAN+PVC pipe in line with EN 1565-1 2		
Diameter 40 mm, wall thickness 3.7 mm	50 x 1.8 mm	EI 240 U/U, EI 240 C/U, EI 240, U/C, EI 240 C/C
Diameter 55 mm, wall thickness 2 mm		
Diameter 75 mm, wall thickness 3 mm	50 x 3.6 mm	EI 240 U/U, EI 240 C/U, EI 240, U/C, EI 240 C/C
Diameter 75 mm, wall thickness 6.6 mm		
Diameter 110 mm, wall thickness 6.6 mm		
Diameter 125 mm, wall thickness 4.8 mm		
Copper with 25 mm thick Armaflex insulation		
Diameter 25 mm, wall thickness 2 – 14.2 mm	50 x 1.8 mm	EI 240 C/U