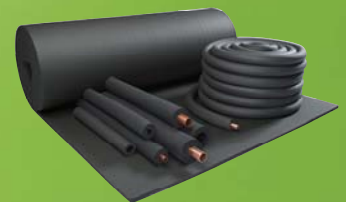


# HT/Armaflex®

UV RESISTANT HIGH TEMPERATURE  
INSULATION FOR INDUSTRIAL AND  
SOLAR APPLICATIONS



- Closed-cell structure provides built-in vapour barrier
- Maximum service temperature up to 150 °C
- High temperature applications
- Low life cycle, maintenance and repair costs
- UV resistant for outdoor use
- Thermal conductivity value  $\lambda_{40\text{ °C}} \leq 0.042 \text{ W/(m} \cdot \text{K)}$

**EPD**  
Environmental Product Declaration



## Technical Data - HT/Armaflex

Brief description	Highly flexible, closed cell insulation material based on extruded elastomeric foam with resistance to UV radiation.
Material type	Synthetic EPDM rubber based foam.
Colour	Black
Applications	Thermal insulation of pipes, vessels and ducts for solar panels (including outdoors), motor vehicles, hot gas lines, steam and dual temperature lines.
Special Features	Fulfills DIN 1988, resistant to UV radiation.
Safety and Environment	Type III Environmental Product Declaration (EPD): Declaration number "EPD-ARM-20150108-IBB1-DE", Institut Bauen und Umwelt e.V. (IBU)
Assembly	The Armaflex application guide should be consulted before use
Remarks	Declaration of Performance is available in accordance with Article 7(3) of Regulation (EU) No 305/2011 on our homepage: <a href="http://www.armacell.com/DoP">www.armacell.com/DoP</a>

Property	Value/Assessment	Test <sup>*1</sup>	Super-vision <sup>*2</sup>	Special Remarks
<b>Temperature Range</b>				
Temperature Range <sup>1</sup>	Max. service temperature <sup>2</sup> + 150 °C (+ 85 °C for tapes) Min. service temperature -50 °C	EU 5666		Tested acc. to EN14707 EN 14706
<b>Thermal Conductivity</b>				
Thermal Conductivity	$\vartheta_m$ 40 °C $\lambda =$	EU 5666	o/●	Tested according to: BS 874 Part 2 1986 EN 12667 EN ISO 8497
	tubes $\lambda \leq 0.042$ W/(m · K) $[\frac{36,92 + 0,125 \cdot \vartheta_m + 0,0008 \cdot (\vartheta_m - 30)^2}{1000}]$			
	sheets $\lambda \leq 0.045$ W/(m · K) $[\frac{39,92 + 0,125 \cdot \vartheta_m + 0,0008 \cdot (\vartheta_m - 30)^2}{1000}]$			
<b>Water vapour diffusion resistance</b>				
Water vapour diffusion resistance	tubes $\mu \geq 4,000$	EU 5666		Tested according to EN 12086 EN 13469
	sheets $\mu \geq 3,000$			
<b>Fire performance</b>				
Reaction to fire	Class 1	GB5154	o/●	Tested according to: BS 476 Part 7: 1997
	Euroclass sheets & tubes UL94	D-s3, d0 & D <sub>L</sub> -s3, d0	EU 5316	Classified acc. to EN 13501-1. Tested acc. to EN 13823 & EN ISO 11925-2.
	Other fire class	UL -approved V-0	UL: EU 5837 Lloyd R: EU 6136	UL: Tested according to UL94, IEC 60695 and Can/CSA-C.22.2 No.0.17, UL 746C Lloyds Register: Tested acc to BS 476 Part 7
Practical fire behaviour	Self-extinguishing, does not drip, does not spread flames			
<b>Other technical features</b>				
Dimensions and tolerances	In accordance with EN 14304, table 1	EU 5316		Tested acc. to EN 822, EN 823, EN 13467
UV resistance <sup>3</sup>	Good			
Health aspects	Dust & Fibre Free			
Storage & Shelf life	Tape, self-adhesive: 1 year			Can be stored in dry, clean rooms at normal relative humidity (50 % to 70 %) and ambient temperature (0 °C - 35 °C)
Resistance to	Building Materials: Very Good Chemicals: Consult Product Test List Ozone: Very Good UV: Very Good			
Environmental Aspects	ODP zero GWP zero	EU 5197		

1. For temperatures above +125 °C or below -50 °C please contact our Technical Department to request the corresponding technical information.

2. At high service temperatures certain hardening processes may start on the inner surface of the material. Investigations show that these changes have no detrimental impact on the physical and fire protection properties of the material, provided the material is installed in the correct way with all joints properly sealed. For specific applications please consult our technical services department.

3. In outdoor applications, the surface of the material may become discoloured and some minor surface cracks may appear. The visual appearance has no influence on the physical properties of the material however (i.e. thermal conductivity and behaviour in the event of fire).

\*1 Further documents such as test certificates and approvals can be requested using the registration number given.

\*2 ●: Official supervision by independent institutes and /or test authorities  
o: In-house quality monitoring

All statements and technical information are based on results obtained under typical conditions. It is the responsibility of the recipient to verify with us that the information is appropriate for the specific use intended. Installation instructions are given in our Armaflex installation manual. Please consult our Technical Department before insulating stainless steel. Armaflex HT625 adhesive must be used to guarantee correct installation. For temperatures below -50 °C or above +150 °C, please consult our Technical Department for further information.

## HT/Armaflex tubes



Length 2.0 m

Pipe max. Outside-Ø [mm]	Inner Ø min/ max mm (tube)	10,0 mm insulation thickness			13,0 mm insulation thickness		
		Code	m/carton		Code	m/carton	
10	11.5 - 13.0	HT-10X010 ●	192		HT-13X010 ●	140	
12	13.5 - 15.0	HT-10X012 ●	172		HT-13X012 ●	130	
15	16.5 - 18.0	HT-10X015	144		HT-13X015	112	
18	19.5 - 21.0	HT-10X018 ●	130		HT-13X018 ●	98	
22	23.5 - 25.0	HT-10X022	108		HT-13X022	84	
28	29.5 - 31.0	HT-10X028 ●	82		HT-13X028 ●	64	
35	36.5 - 38.5	HT-10X035 ●	60		HT-13X035	50	
42	44.0 - 46.0	HT-10X042 ●	50		HT-13X042	40	
48	50.0 - 52.0	-	-		HT-13X048	32	
54	55.5 - 57.5	-	-		HT-13X054	32	
60	62.0 - 64.0	-	-		HT-13X060	28	
76	77.5 - 80.0	-	-		HT-13X076	24	
89	91.0 - 93.0	-	-		HT-13X089	18	

Pipe max. Outside-Ø [mm]	Inner Ø min/ max mm (tube)	19,0 mm insulation thickness			25 mm insulation insulation thickness		
		Code	m/carton		Code	m/carton	
12	13.5 - 15.0	HT-19X012 ●	80		-	-	
15	16.5 - 18.0	HT-19X015	64		HT-25X015	40	
18	19.5 - 21.0	HT-19X018 ●	58		HT-25X018 ●	36	
22	23.5 - 25.0	HT-19X022	50		HT-25X022	36	
28	29.5 - 31.0	HT-19X028	48		HT-25X028	32	
35	36.5 - 38.5	HT-19X035	32		HT-25X035	24	
42	44.0 - 46.0	HT-19X042	24		HT-25X042	20	
48	50.0 - 52.0	HT-19X048	22		HT-25X048	16	
54	55.5 - 57.5	HT-19X054	18		HT-25X054	16	
60	62.0 - 64.0	HT-19X060	16		HT-25X060	16	
76	77.5 - 80.0	HT-19X076	18		HT-25X076	12	
89	91.0 - 93.0	HT-19X089	16		HT-25X089	12	

**Length tolerance for tubes:** ± 1,5 %  
**Thickness tolerance** 10 - 13 mm ± 1,5 mm  
 19 - 25 mm ± 2,5 mm

● Not a stock item. Delivery on request.

## HT/Armaflex tubes endless (coils)



Pipe max. Outside-Ø [mm]	Inner Ø min/ max mm (tube)	13,0 mm insulation thickness			19,0 mm insulation thickness		
		Code	m/carton		Code	m/carton	
15	16.5 - 18.0	HT-13X015/E ●	26		HT-19X015/E ●	16	
18	19.5 - 21.0	HT-13X018/E ●	22		HT-19X018/E ●	14	
22	23.5 - 25.0	HT-13X022/E ●	18		HT-19X022/E ●	12	

**Length tolerance for tubes:** ± 1,5 %  
**Thickness tolerance** 10 - 13 mm ± 1,5 mm  
 19 - 25 mm ± 2,5 mm

● Not a stock item. Delivery on request.

## HT/Armaflex continuous sheets (rolls)



Width 1.0 m

Code	Thickness [mm]	Roll length [m]	m <sup>2</sup> /carton	
HT-10-99/E ●	10.0	10	10	
HT-13-99/E ●	13.0	8	8	
HT-19-99/E ●	19.0	6	6	
HT-25-99/E	25.0	4	4	
HT-32-99/E ●	32.0	3	3	

Length tolerance for sheets ± 5 % - 1.5%  
 Thickness tolerance for sheets 10 - 19mm = ± 1.5 mm  
 25 - 32mm = ± 2 mm

● Not a stock item. Delivery on request.

## HT/Armaflex self-adhesive tapes



Code	Width [mm]	Length [m]	Thickness [mm]	Rolls/carton	
HT-TAPE	50.0	15	3	12	

## HT/Armaflex accessories



Code	Description	Pieces/carton	
ADH-HT625/0,25 ●	Armaflex HT625 one-component adhesive, 0,25 litre cans (with brush)	40	
ADH-HT625/0,5	Armaflex HT625 one-component adhesive, 0,5 litre cans	12	
ADH-HT625/1,0	Armaflex® HT625 one-component adhesive, 1,0 litre cans	12	
CLEANER/1,0	Special cleaner for use with Armaflex® Adhesive 520 and Armaflex® Adhesive HT625.	4	

● Not a stock item. Delivery on request.