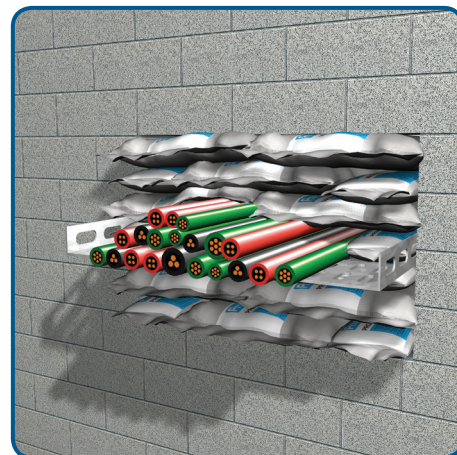


Basic Requirements for Creating a Penetration

Determine the required period of fire resistance of the element, and for loadbearing structures, ascertain the required load. The area to be sealed requires the same fire resistance as the complete floor or wall construction. Ensure enough space around the services to install a fire stopping penetration seal. Otherwise the necessary space has to be created. In order to ensure the stability of the services is maintained under fire conditions, we recommend that all services must be adequately supported at maximum 250mm away from the wall or floor on both sides of the penetration. System fixings, impact protection and suspension elements must be steel. Monal alloys, aluminium etc are not permitted. Accessories such as guard-rails, steel angles, threaded rods. Suspension elements etc. must only be fixed to adjacent solid substrates such as concrete or masonry.

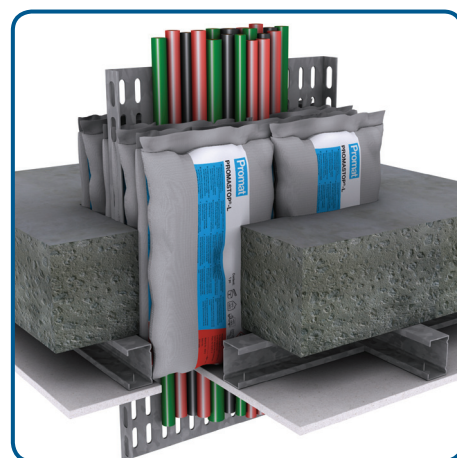


General Information

- Suitable for cable transport systems and plastic pipes up to a maximum of external pipe diameter 50 mm

Application Conditions

- Install PROMASTOP® pillows in a staggered orientation, similar to the pattern used for laying of house bricks



Consumption Data

Opening		Cable Capacity			
Combination PROMASTOP®-S & PROMASTOP®-L		10 %	20 %	30 %	40 %
0.1 m ²	PROMASTOP®-S	3	2	2	2
	+ PROMASTOP®-L	12	11	10	9
0.2 m ²	PROMASTOP®-S	6	4	4	4
	+ PROMASTOP®-L	24	22	20	18
0.3 m ²	PROMASTOP®-S	9	6	6	6
	+ PROMASTOP®-L	36	33	30	27
0.4 m ²	PROMASTOP®-S	12	8	8	8
	+ PROMASTOP®-L	48	44	40	36
0.5 m ²	PROMASTOP®-S	15	10	10	10
	+ PROMASTOP®-L	60	55	50	45
0.6 m ²	PROMASTOP®-S	18	12	12	12
	+ PROMASTOP®-L	72	66	60	54
0.7 m ²	PROMASTOP®-S	21	14	14	14
	+ PROMASTOP®-L	84	77	70	63
0.8 m ²	PROMASTOP®-S	24	16	16	16
	+ PROMASTOP®-L	96	88	80	72
0.9 m ²	PROMASTOP®-S	27	18	18	18
	+ PROMASTOP®-L	108	99	90	81
1.0 m ²	PROMASTOP®-S	30	20	20	20
	+ PROMASTOP®-L	120	110	100	90

Installation: Wall and Floor condition

- Clean opening;
- For horizontal applications only: fix a supporting structure (e.g. steel grid; not supplied;) to the underside of the floor;
- First layer of pillows should be installed beneath the cables and/or pipes;
- Cover cables and/or pipes with fire stopping pillows;
- Close the opening with fire stopping pillows, these should be laid in the fashion of bricks, eg staggered vertical joints, and the pillows must be very tightly packed within the opening. It is important that no gaps are permitted within the opening or around the services.
- Fix identification label.

For additional information on how and where to use this product please refer to our systems database www.promat.info, or visit our website at <http://www.promat.at>