

PROMASTOP®-B Fire stopping brick

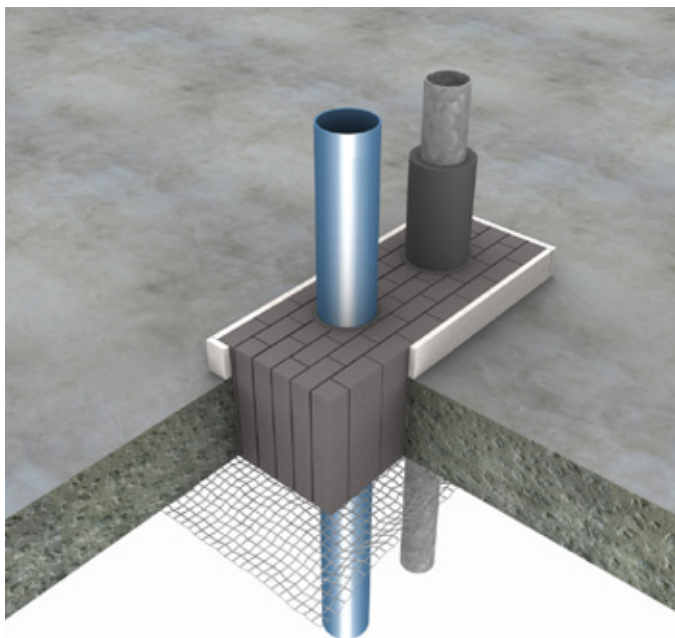
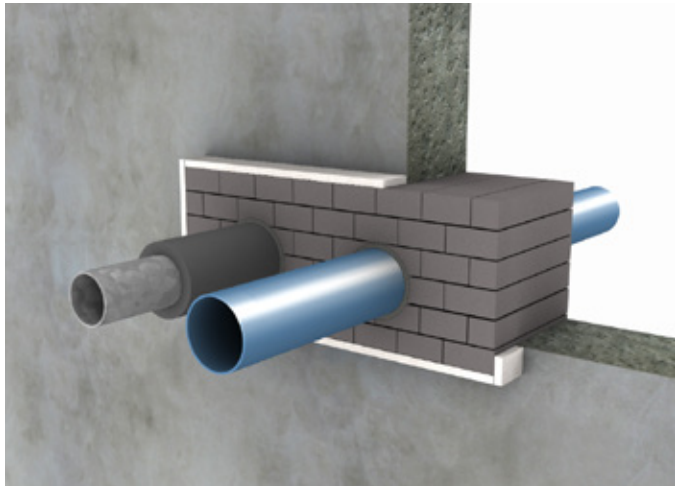
Product handling guideline

Penetration seal



PROMASTOP®-B

Fire stopping brick



PROMASTOP®-B is a permanently elastic intumescent brick and is used to prevent the spread of fire and smoke.

General information

- Suitable for cable and non-combustible pipe penetrations;
- PROMASTOP®-B is applied in combination with PROMASEAL®-AG for cable penetrations;
- Simple and exact fit, easily cut using standard cutting equipment (dampen knife before cutting);
- Painting is possible; adhesion and compatibility must be checked;
- Ensure enough space around the services to install a fire stopping penetration seal. Otherwise the necessary space has to be created.
- Use category is type Y₁
 - Products intended for use at temperatures between -20 °C and + 70 °C, with exposure to UV but no exposure to rain.

System installation details

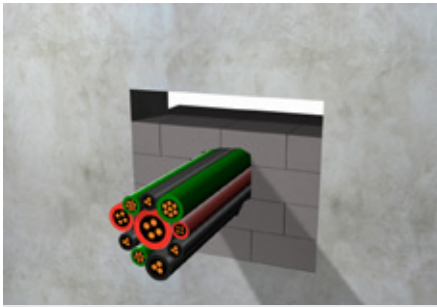
Please refer to ETA, Classification report or handbook for installation details on cables and pipes.

Safety information

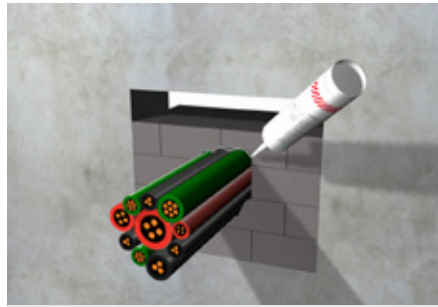
Safety information sheet available on request.

m ² - opening	Cable Capacity in %			
	0%	10%	30%	60%
0,005	1	1	1	1
0,01	1	1	1	1
0,02	3	3	2	1
0,03	4	4	3	2
0,04	6	5	4	2
0,05	7	6	5	3
0,1	14	13	10	6
0,2	28	25	19	11
0,3	42	38	29	17
0,4	56	50	39	22
0,5	69	63	49	28

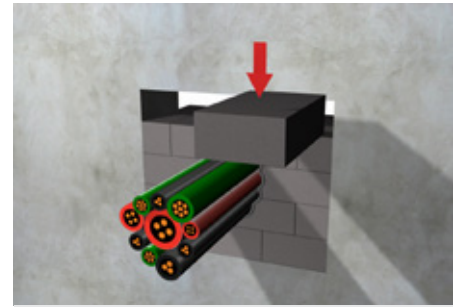
Installation guideline



1. Ensure 200 mm frame; install PROMASTOP®-B in a staggered orientation, similar to the pattern used for laying house bricks



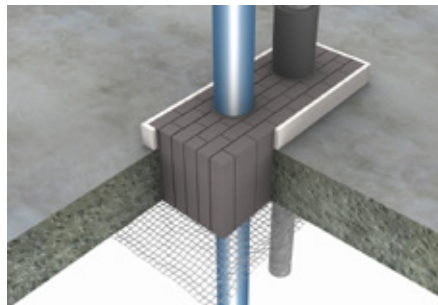
2. Apply PROMASEAL®-AG around cables and cable bundles



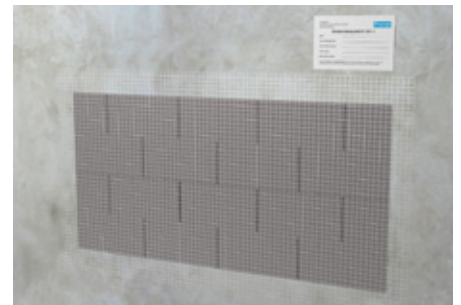
3. In the top row cut the bricks to size with an oversize of 5 to 7 mm, compress and insert them into the remaining gap



4. Fix identification label



5. For floor penetration a steel mesh (maximum mesh width 50 x 50 mm or equal product) should be installed; For floors a connection between the two meshes has to be done with M8 threaded rods (washers and nuts).



6. For blank seals a grid maximum mesh width of 50 x 50 mm has to be installed

Note: Maximum opening size in wall and floor 1,44 m². For floor, insert an appropriate approved metal grid as foot traffic protection.

Bulgaria

Etex Building Performance S.A.

Str. Vulturilor Nr. 98, 5th Floor
030857 Bucharest, Romania
M +359 878 81 51 05
E info.bg@promat-see.com
www.promat-see.com

Croatia, Bosnia and Herzegovina

Etex Building Performance

Promat d.o.o.

Kovinska 4a
10090 Zagreb
T +385 1 349 63 24
F +385 1 379 41 54
E info.hr@promat-see.com
www.promat-see.com

Greece

Etex Building Performance S.A.

Str. Vulturilor Nr. 98, 5th Floor
030857 Bucharest, Romania
T +40 31 224 01 00
F +40 31 224 01 01
E info@promat-see.com
www.promat-see.com

Hungary

Etex Building Performance

Creaton South-East Europe Kft.

Malomkő u. 7.1. emelet
2040 Budaörs
M +36 30 343 2572
M +36 30 455 1273
E info.hu@promat-see.com
www.promat-see.com

Kosovo, Albania

Etex Building Performance Sh.A.

Ulpiana, D-1, HY-4 Nr.2
10000 Prishtina
T +383 38 553 407
M +381 64 61 39 763
M +377 44 120 671
E info@promat-see.com
www.promat-see.com

Romania

Etex Building Performance S.A.

Str. Vulturilor Nr. 98, 5th Floor
030857 Bucharest
T +40 31 224 01 00
F +40 31 224 01 01
E info.ro@promat-see.com
www.promat-see.com

Serbia, Macedonia, Montenegro

Etex Building Performance d.o.o.

Vojvode Putnika 79
21208 Sremska Kamenica
T +381 21 210 10 90
M +381 63 625 426
M +381 63 510 720
E info.rs@promat-see.com
www.promat-see.com

Slovakia

Etex Building Performance

EBM Co. s.r.o.

Štúrova 155
949 01 Nitra
M +421 915 936 126
E info.sk@promat-see.com
www.promat-see.com

Slovenia

Etex Building Performance

Promat d.o.o.

Kidričeva 56b
4220 Škofja Loka
T +386 4 51 51 451
F +386 4 51 51 450
E info.si@promat-see.com
www.promat-see.com