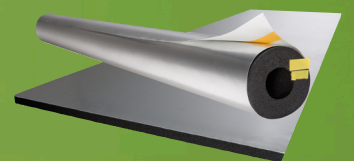
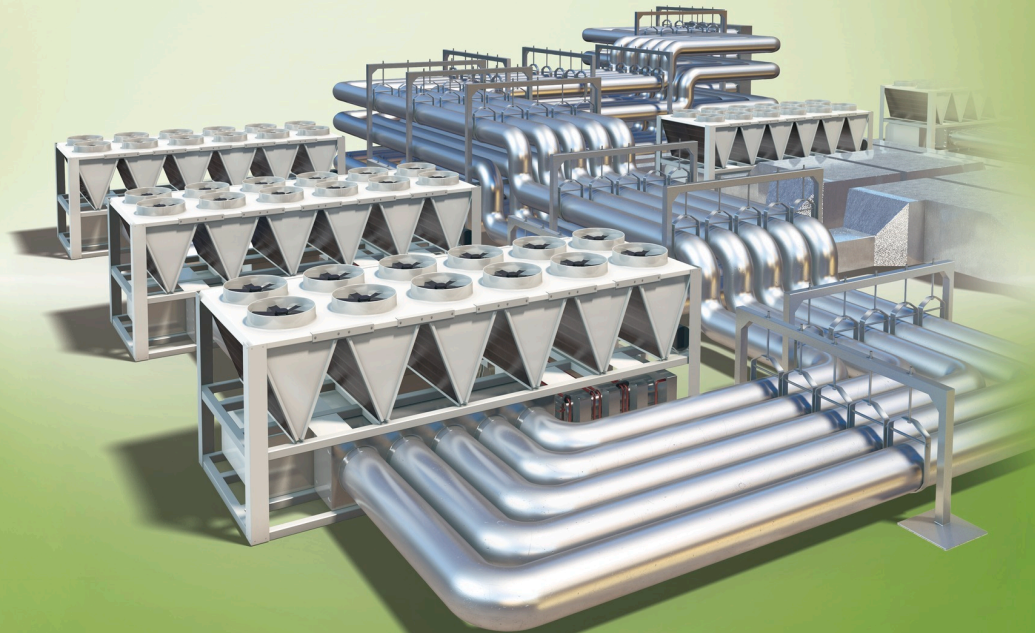


**Arma-Chek<sup>®</sup>**  
Silver

FLEXIBLE MECHANICAL PROTECTION



- Insulation and covering in one product
- Saves installation time
- Easy to clean
  
- Full system with Tape, Elbows and T-Parts
- Good chemical resistance

## INSULATION AND CLADDING IN ONE PRODUCT

Arma-Chek Silver is based on high performance AF/Armaflex insulation combined with a UV resistant metal finishing for aesthetic indoor and outdoor installations.

The product saves installation time with the pre-covered System compared with traditional cladding. In addition, the self-adhesive tubes are with tangential cut for improved adhesion security.

Watch the video under <http://youtu.be/x0nHyDRcEzo> and see the difference!



## PRE-FORMED PARTS

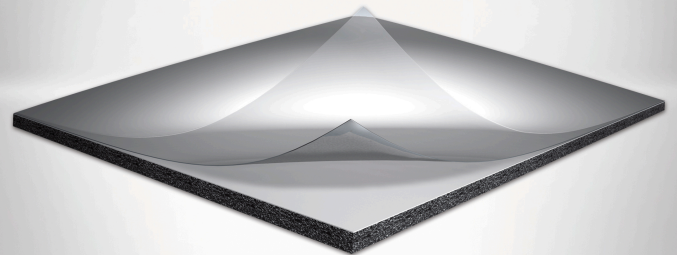
Specially designed Arma-Chek Silver elbows and t-pieces offer you additional installation time savings. The pre-formed parts match the Armaflex tubes perfectly and complete the system.

Together with the prefabricated AF/Armaflex elbows and T-pieces thus fabrication and installation times can be reduced even further.



## UV-RESISTANCE

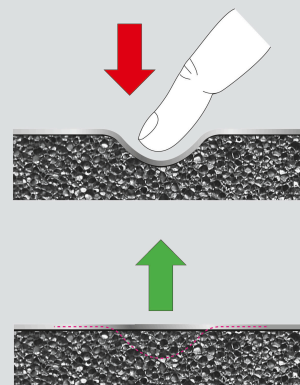
The UV-resistance of Arma-Chek Silver is constantly tested with Weather-O-Meter equipment according to ISO 4892. The samples are exposed to simulated weather for at least 15000 hours, which equals estimated 15 years of outdoor application in Central Europe.



## SURFACE PRESSURE RESISTANCE

Unlike traditional metal cladding, Arma-Chek Silver recovers itself to original shape after pressure is exerted on its surface.

This property prevents lasting dents and ensures a durable installation.



## Technical Data - Arma-Chek Silver

|                   |  |
|-------------------|--|
| Brief description | Arma-Chek Silver is a covering system with a double layer laminate of aluminium, coated with a special UV protection and a PVC backing. Enclosing an Armaflex substrate, the Arma-Chek Silver jacketing is highly puncture and tear resistant as well as flame retardant. Arma-Chek Silver can be used for insulation and protection of HVAC and Refrigeration systems inside or outside.  |
| Material type     | Insulation: Highly flexible, closed-cell elastomeric foam material based on synthetic rubber.<br>Covering: double layer laminate of aluminium, coated with a special UV protection and a PVC backing.  |
| Colour            | silver (covering)  |
| Product Range     | Arma-Chek Silver is available in a range of pre-insulated tubes & sheets, as well as single covering incl. pre-insulated bends & t-pieces.   |
| Applications      | Insulation and protection of pipes, ducts, valves and vessels of refrigeration and air conditioning equipments, clean room environments, food industries etc.  |
| Special Features  | For outdoor use please note: Testing regarding UV resistance of these materials showed excellent results. When used on outdoor applications the materials showed very good durability even under UV exposition. However, due to the unpredictable nature of outdoor conditions in the whole variety of thinkable installations, there might be occasional weathering influences on the materials' consistence, which can not be tested in advance. Therefore, installations in extreme environments (regions of extreme weather conditions like high mountains etc.) can not be recommended. In case of doubt please contact our Customer Service. |
| Assembly          | The Armaflex and Arma-Chek installation manuals should be consulted before assembly. We offer special installation courses for the application of Arma-Chek. Please consult our Customer Service.  |
| Remarks           | Declaration of Performance is available in accordance with Article 7(3) of Regulation (EU) No 305/2011 on our homepage: <a href="http://www.armacell.com/DoP">www.armacell.com/DoP</a>   |

| Property                                 | Value/Assessment  | Test <sup>1</sup>  | Special Remark   |
|--|---|--------------------|--|
| <b>Temperature Range</b>                 |   |                    |  |
| Temperature Range <sup>1</sup>           | max. service temperature +110 °C for substrate (+85 °C if sheet is glued to the object with its whole surface) (+75 °C for the silver jacketing)  | EU 5695            | Tested acc. to EN 14706, EN 14707 and EN 14304   |
|  | min. service temperature <sup>2</sup> -25 °C  |                    |  |
| <b>Thermal Conductivity</b>              |   |                    |  |
| Thermal Conductivity                     | depends on used Armaflex substrate  | EU 5695<br>EU 6430 | Declared acc. to EN ISO 13787<br>Tested acc. to EN 12667<br>EN ISO 8497  |
| <b>Water vapour diffusion resistance</b> |   |                    |  |
| Water vapour diffusion resistance        | sheets and tubes $\mu$ $\geq$ 15.000  | EU 5695            | Tested according to EN ISO 12086, EN 13469   |
| <b>Fire performance</b>                  |   |                    |  |
| Reaction to fire                         | Arma-Chek Silver (AF) tubes C <sub>L</sub> -s3, d0<br>Arma-Chek Silver (AF) sheets 13 - 25 mm C-s3, d0<br>Arma-Chek Silver (AF) sheets 32 - 50 mm D-s3, d0<br>Arma-Chek Silver (ACE) tubes and sheets E | EU 5695            | EN 13823<br>EN ISO 11925-2   |
| <b>Other technical features</b>          |   |                    |  |
| Dimensions and tolerances                | In acc. with EN 14304, Table 1 (Armaflex substrate)   | EU 5695            | Tested acc. to EN 822, EN 823, EN 13467  |
| Weight                                   | approx. 340 g/m <sup>2</sup> (covering)   |                    | Tested according to EN 22286   |
| Material thickness                       | approx. 230 $\mu$ m   |                    | Tested according to EN 22286   |
| Resistance to mechanical impact          | Good puncture and tear resistance.  |                    |  |
| UV resistance <sup>3</sup>               | Excellent   | TB 142             | Tested according to EN ISO 4892-2 (Xenon-Test)   |
| Tear strength                            | MD 70 N<br>CD 28 N  |                    | Tested acc. to EN ISO 527-3  |
| Health aspects                           | Dust and fibre free.  |                    |  |
| Storage & Shelf life                     | Tape, sheets, tubes, self-adhesive: 1 year  |                    | Can be stored in dry, clean rooms at normal relative humidity (50% to 70%) and ambient temperature (0 °C – 35 °C). |

1. When there are fluctuations in temperature, the surface may wrinkle slightly, as elastomeric products expand and contract in these circumstances. However, these superficial changes do not have any impact on the performance of the material. The wrinkles usually disappear as soon as the plant is heated to its original operating temperature.

2. For temperatures below -30 °C or above +100 °C, please consult our Customer Service Center for further information.

3. In outdoor applications the colour may fade. This does not have any impact on the functionality of the covering or the insulation material.

\*1 Further documents such as test certificates, approvals and the like can be requested using the registration number given.

All data and technical information are based on results achieved under typical application conditions. Recipients of this information should, in their own interest and responsibility, clarify with us in due time whether or not the data and information apply to the intended application area. Installation instructions are available in our Arma-Chek installation manual. Please consult our Customer Service Center before insulating stainless steels. Armaflex 520 adhesive and Clipse must be used to guarantee proper installation.

# Arma-Chek Silver in the world's largest lyocell plant

## LENZING, AUSTRIA

The Lenzing Group's new lyocell fibre plant is record-breaking: in just 24 months the most modern fibre production facilities in the world were constructed at the company headquarters.



## CHALLENGE

Part of the new patented TENCEL® line is an innovative air-handling concept. The wet-spinning process results in very high temperatures and high humidity in the production areas. These conditions are very different to those outdoors where temperatures range from -16 °C in winter to +35 °C in summer. So it is essential that the air-handling equipment is insulated efficiently. The product installed also had to be UV-resistant and easy to clean. Furthermore, the schedule for insulating the extensive pipe- and ductwork was very tight.

## SOLUTION

In these ambient conditions a closed-cell insulation material was the only option for the project management of Lenzing AG. Together with the insulation company Knierzinger the optimal solution for the complex requirements was found in Arma-Chek Silver. The product not only provides the pipes with reliable protection against condensation – the tough, covered insulation material is also UV-resistant and very easy to clean. Unlike traditional insulation materials and coverings, Arma-Chek Silver can be installed in one work step. The pre-covered elastomeric insulation material was specified for insulating the entire pipe- and ductwork of the air-handling system. All in all 10,455 m<sup>2</sup> of Arma-Chek Silver continuous sheets in insulation thicknesses of 19, 25 and 32 mm were installed.

### The insulation contractor:

"Especially in production areas where space is at a premium, Arma-Chek Silver is an ideal solution. When installed professionally, the pre-covered, closed-cell insulation material ensures reliable condensation control even where there is a high temperature difference and prevents energy losses. Using the 2-in-1 product also allowed us to save a great deal of time – a huge benefit when you're on such a tight schedule. And the result looks really good, too."



## Arma-Chek Silver (AF) tubes self-adhesive pre-covered



Length 1,0 m

| Pipe max. Outside-Ø [mm] | Inner Ø min/ max mm | AF-2<br>insulation thickness 11,5 mm - 16,0 mm |               |          | AF-4<br>Insulation thickness 17,0 mm - 25,0 mm |               |          |
|--------------------------|---------------------|--|---------------|----------|--|---------------|----------|
|                          |                     | Insulation thickness [mm]                      | Code          | m/carton | Insulation thickness [mm]                      | Code          | m/carton |
| 15                       | 16,0 - 17,5         | 11,5   | AFSI-2-015 ○  | 65       | 17,0   | AFSI-4-015    | 44       |
| 18                       | 19,0 - 20,5         | 11,5   | AFSI-2-018    | 60       | 17,5   | AFSI-4-018    | 35       |
| 22                       | 23,0 - 24,5         | 12,0   | AFSI-2-022    | 50       | 18,0   | AFSI-4-022    | 30       |
| 28                       | 29,0 - 30,5         | 12,5   | AFSI-2-028    | 42       | 19,0   | AFSI-4-028    | 24       |
| 35                       | 36,0 - 38,0         | 13,0   | AFSI-2-035    | 31       | 19,5   | AFSI-4-035    | 18       |
| 42                       | 43,5 - 45,5         | 13,5   | AFSI-2-042    | 24       | 20,5   | AFSI-4-042    | 16       |
| 48                       | 49,5 - 51,5         | 13,5   | AFSI-2-048    | 22       | 21,0   | AFSI-4-048    | 12       |
| 54                       | 55,0 - 57,0         | 13,5   | AFSI-2-054    | 18       | 21,0   | AFSI-4-054    | 12       |
| 60                       | 61,5 - 63,5         | 14,0   | AFSI-2-060    | 16       | 21,5   | AFSI-4-060    | 10       |
| 64                       | 65,0 - 67,5         | 14,0   | AFSI-2-064    | 15       | 21,5   | AFSI-4-064    | 9        |
| 76                       | 77,0 - 79,5         | 14,0   | AFSI-2-076    | 14       | 22,0   | AFSI-4-076    | 8        |
| 89                       | 90,5 - 93,5         | 14,5   | AFSI-2-089    | 11       | 22,5   | AFSI-4-089    | 6        |
| 114                      | 116,0 - 120,0       | 15,0   | AFSI-2-114 ○● | 8        | 23,5   | AFSI-4-114 ○● | 5        |
| 140                      | 142,0 - 146,0       | 15,5   | AFSI-2-140 ○● | 4        | 24,5   | AFSI-4-140 ○● | 3        |
| 168                      | 170,0 - 176,0       | -  | -             | -        | 25,0   | AFSI-4-168 ○● | 2        |

| Pipe max. Outside-Ø [mm] | Inner Ø min/ max mm | AF-5<br>insulation thickness 25,0 mm - 33,0 mm |               |          |   |   |   |
|--------------------------|---------------------|--|---------------|----------|---|---|---|
|                          |                     | Insulation thickness [mm]                      | Code          | m/carton |   |   |   |
| 18                       | 19,0 - 20,5         | 25,0   | AFSI-5-018    | 21       | - | - | - |
| 22                       | 23,0 - 24,5         | 25,0   | AFSI-5-022    | 18       | - | - | - |
| 28                       | 29,0 - 30,5         | 25,0   | AFSI-5-028    | 18       | - | - | - |
| 35                       | 36,0 - 38,0         | 27,0   | AFSI-5-035    | 12       | - | - | - |
| 42                       | 43,5 - 45,5         | 27,0   | AFSI-5-042    | 11       | - | - | - |
| 48                       | 49,5 - 51,5         | 27,5   | AFSI-5-048    | 8        | - | - | - |
| 54                       | 55,0 - 57,0         | 28,5   | AFSI-5-054    | 8        | - | - | - |
| 60                       | 61,5 - 63,5         | 29,0   | AFSI-5-060    | 6        | - | - | - |
| 64                       | 65,0 - 67,5         | 29,0   | AFSI-5-064    | 6        | - | - | - |
| 76                       | 77,0 - 79,5         | 30,0   | AFSI-5-076    | 5        | - | - | - |
| 89                       | 90,5 - 93,5         | 30,5   | AFSI-5-089    | 4        | - | - | - |
| 114                      | 116,0 - 120,0       | 31,5   | AFSI-5-114 ○● | 3        | - | - | - |
| 140                      | 142,0 - 146,0       | 32,0   | AFSI-5-140 ○● | 3        | - | - | - |
| 168                      | 170,0 - 176,0       | 33,0   | AFSI-5-168 ○● | 2        | - | - | - |

**Length tolerance for tubes** +/- 1,5%

**Thickness tolerance**

|             |         |
|-------------|---------|
| ≤ 8 mm:     | ±1,0 mm |
| 9 - 18 mm:  | ±1,5 mm |
| 19 - 31 mm: | ±2,5 mm |
| > 31 mm:    | ±3,0 mm |

○ In the case of this item the seam is not self-adhesive and is achieved with a radial cut surface.

● Item not in stock. Delivery on request. [MTO]

## Arma-Chek Silver (AF) sheets endless pre-covered



Width 1,0 m

| Code        | Insulation thickness [mm] | Roll length [m] | m <sup>2</sup> /carton |
|-------------|---------------------------|-----------------|------------------------|
| AFSI-13MM/E | 13,0                      | 8               | 8                      |
| AFSI-19MM/E | 19,0                      | 6               | 6                      |
| AFSI-25MM/E | 25,0                      | 4               | 4                      |
| AFSI-32MM/E | 32,0                      | 3               | 3                      |

**Length tolerance for sheets** +/- 1,5%

**Thickness tolerance for sheets**

|            |         |
|------------|---------|
| ≤ 6 mm:    | ±1,0 mm |
| 7 - 19 mm: | ±1,5 mm |
| > 19 mm:   | ±2,0 mm |

## Arma-Chek Silver (AF) sheets endless self-adhesive pre-covered



Width 1,0 m

| Code                  | Insulation thickness [mm] | Roll length [m] | m <sup>2</sup> /carton |
|-----------------------|---------------------------|-----------------|------------------------|
| <b>AFSI-13MM/EA</b> ● | 13,0                      | 8               | 8                      |
| <b>AFSI-19MM/EA</b> ● | 19,0                      | 6               | 6                      |
| <b>AFSI-25MM/EA</b> ● | 25,0                      | 4               | 4                      |
| <b>AFSI-32MM/EA</b> ● | 32,0                      | 3               | 3                      |

Length tolerance for sheets

+/- 1,5%

Thickness tolerance for sheets

≤ 6 mm: ±1,0 mm

7 - 19 mm: ±1,5 mm

> 19 mm: ±2,0 mm

● Item not in stock. Delivery on request. [MTO]

## Arma-Chek Silver covering endless



Color silver, Covering foil

| Code                | Width [mm] | Roll length [m] | Rolls/carton | m <sup>2</sup> /carton |
|---------------------|------------|-----------------|--------------|------------------------|
| <b>ACH-SI25</b>     | 1.040,0    | 25              | 2            | 52                     |
| <b>ACH-SI25/100</b> | 100,0      | 25              | 4            | 10                     |

## Arma-Chek Silver elbows pre-fabricated



Color silver, Elbow fitting (covering without insulation)

| Pipe max. Outside-Ø [mm] | AF-2<br>insulation thickness 11,5 mm - 16,0 mm |               | AF-4<br>insulation thickness 15,5 mm - 25,0 mm |               |
|--------------------------|--|---------------|--|---------------|
|                          | Code   | Pieces/carton | Code   | Pieces/carton |
| 15                       | <b>ACHB-040</b>                                | 1             | <b>ACHB-050</b>                                | 1             |
| 18                       | <b>ACHB-040</b>                                | 1             | <b>ACHB-060</b>                                | 1             |
| 22                       | <b>ACHB-050</b>                                | 1             | <b>ACHB-060</b>                                | 1             |
| 28                       | <b>ACHB-050</b>                                | 1             | <b>ACHB-070</b>                                | 1             |
| 35                       | <b>ACHB-060</b>                                | 1             | <b>ACHB-080</b>                                | 1             |
| 42                       | <b>ACHB-070</b>                                | 1             | <b>ACHB-080</b>                                | 1             |
| 48                       | <b>ACHB-080</b>                                | 1             | <b>ACHB-090</b>                                | 1             |
| 54                       | <b>ACHB-080</b>                                | 1             | <b>ACHB-100</b>                                | 1             |
| 60                       | <b>ACHB-090</b>                                | 1             | <b>ACHB-110</b>                                | 1             |
| 64                       | <b>ACHB-100</b>                                | 1             | <b>ACHB-110</b>                                | 1             |
| 76                       | <b>ACHB-110</b>                                | 1             | <b>ACHB-120</b>                                | 1             |
| 89                       | <b>ACHB-130</b> ●                              | 1             | <b>ACHB-140</b>                                | 1             |
| 114                      | <b>ACHB-150</b> ●                              | 1             | <b>ACHB-160</b> ●                              | 1             |
| 140                      | <b>ACHB-180</b> ●                              | 1             | <b>ACHB-200</b> ●                              | 1             |
| 168                      | <b>ACHB-210</b> ●                              | 1             | <b>ACHB-220</b> ●                              | 1             |

| Pipe max. Outside-Ø [mm] | AF-5<br>insulation thickness 25,0 mm - 32,0 mm |               |   |   |
|--------------------------|--|---------------|---|---|
|                          | Code   | Pieces/carton |   |   |
| 18                       | <b>ACHB-070</b>                                | 1             | - | - |
| 22                       | <b>ACHB-080</b>                                | 1             | - | - |
| 28                       | <b>ACHB-080</b>                                | 1             | - | - |
| 35                       | <b>ACHB-090</b>                                | 1             | - | - |
| 42                       | <b>ACHB-100</b>                                | 1             | - | - |
| 48                       | <b>ACHB-100</b>                                | 1             | - | - |
| 54                       | <b>ACHB-110</b>                                | 1             | - | - |
| 60                       | <b>ACHB-120</b>                                | 1             | - | - |
| 64                       | <b>ACHB-120</b>                                | 1             | - | - |
| 76                       | <b>ACHB-130</b> ●                              | 1             | - | - |
| 89                       | <b>ACHB-160</b> ●                              | 1             | - | - |
| 114                      | <b>ACHB-180</b> ●                              | 1             | - | - |
| 140                      | <b>ACHB-210</b> ●                              | 1             | - | - |
| 168                      | <b>ACHB-230</b>                                | 1             | - | - |

● Item not in stock. Delivery on request. [MTO]

## Arma-Chek Silver elbows pre-fabricated



Color black, Elastomeric pre-fabricated elbows

| Pipe max. Outside-Ø [mm] | AF-2<br>insulation thickness |                |                     |               | AF-4<br>insulation thickness |                |                     |               |
|--------------------------|------------------------------|----------------|---------------------|---------------|------------------------------|----------------|---------------------|---------------|
|                          | Code                         | Thickness [mm] | Article description | Pieces/carton | Code                         | Thickness [mm] | Article description | Pieces/carton |
| 15                       | AF-2-015-C90 ●               | 11,5           | 3 segment           | 3             | AF-4-015-C90 ●               | 17             | 3 segment           | 3             |
| 18                       | AF-2-018-C90 ●               | 11,5           | 3 segment           | 3             | AF-4-018-C90 ●               | 17,5           | 3 segment           | 3             |
| 22                       | AF-2-022-C90 ●               | 12             | 3 segment           | 3             | AF-4-022-C90 ●               | 18             | 3 segment           | 3             |
| 28                       | AF-2-028-C90 ●               | 12,5           | 3 segment           | 3             | AF-4-028-C90 ●               | 19             | 3 segment           | 3             |
| 35                       | AF-2-035-C90 ●               | 13,0           | 3 segment           | 3             | AF-4-035-C90 ●               | 19,5           | 3 segment           | 3             |
| 42                       | AF-2-042-C90 ●               | 13,5           | 3 segment           | 3             | AF-4-042-C90 ●               | 20,5           | 4 segment           | 3             |
| 48                       | AF-2-048-C90 ●               | 13,5           | 3 segment           | 3             | AF-4-048-C90 ●               | 21             | 4 segment           | 3             |
| 54                       | AF-2-054-C90 ●               | 13,5           | 3 segment           | 3             | AF-4-054-C90 ●               | 21             | 4 segment           | 3             |
| 60                       | AF-2-060-C90 ●               | 14             | 3 segment           | 3             | AF-4-060-C90 ●               | 21,5           | 4 segment           | 3             |
| 64                       | AF-2-064-C90 ●               | 14             | 4 segment           | 3             | AF-4-064-C90 ●               | 21,5           | 4 segment           | 3             |
| 76                       | AF-2-076-C90 ●               | 14             | 4 segment           | 3             | AF-4-076-C90 ●               | 22             | 4 segment           | 3             |
| 89                       | AF-2-089-C90 ●               | 14,5           | 4 segment           | 3             | AF-4-089-C90 ●               | 22,5           | 4 segment           | 3             |

| Pipe max. Outside-Ø [mm] | AF-5<br>insulation thickness |                |                     |               |   |   |   |   |
|--------------------------|------------------------------|----------------|---------------------|---------------|---|---|---|---|
|                          | Code                         | Thickness [mm] | Article description | Pieces/carton |   |   |   |   |
| 18                       | AF-5-018-C90 ●               | 25             | 3 segment           | 3             | - | - | - | - |
| 22                       | AF-5-022-C90 ●               | 25             | 3 segment           | 3             | - | - | - | - |
| 28                       | AF-5-028-C90 ●               | 25             | 4 segment           | 3             | - | - | - | - |
| 35                       | AF-5-035-C90 ●               | 27             | 4 segment           | 3             | - | - | - | - |
| 42                       | AF-5-042-C90 ●               | 27             | 4 segment           | 3             | - | - | - | - |
| 48                       | AF-5-048-C90 ●               | 27,5           | 4 segment           | 3             | - | - | - | - |
| 54                       | AF-5-054-C90 ●               | 28,5           | 4 segment           | 3             | - | - | - | - |
| 60                       | AF-5-060-C90 ●               | 29             | 4 segment           | 3             | - | - | - | - |
| 64                       | AF-5-064-C90 ●               | 29             | 4 segment           | 3             | - | - | - | - |
| 76                       | AF-5-076-C90 ●               | 30             | 4 segment           | 3             | - | - | - | - |
| 89                       | AF-5-089-C90 ●               | 30,5           | 4 segment           | 3             | - | - | - | - |

### Thickness tolerance

AF-1, AF-2: ± 1,0 mm  
 AF-3, AF-4: ± 1,5 mm  
 AF-5: ± 2,5 mm  
 AF-6: ± 3,0 mm

### Remark

Other items can be produced make to order.

- Item not in stock. Delivery on request. [MTO]

## Arma-Chek Silver t-pieces pre-fabricated



Color silver, T-piece fitting (covering without insulation)

| Pipe max. Outside-Ø [mm] | AF-2<br>insulation thickness 11,5 mm - 16,0 mm |               | AF-4<br>Insulation thickness 17,0 mm - 25,0 mm |               |
|--------------------------|--|---------------|--|---------------|
|                          | Code   | Pieces/carton | Code   | Pieces/carton |
| 18                       | -  | -             | ACHT-052                                       | 1             |
| 22                       | ACHT-052                                       | 1             | ACHT-057                                       | 1             |
| 28                       | ACHT-052                                       | 1             | ACHT-067                                       | 1             |
| 35                       | ACHT-057                                       | 1             | ACHT-073                                       | 1             |
| 42                       | ACHT-067                                       | 1             | ACHT-082                                       | 1             |
| 48                       | ACHT-073                                       | 1             | ACHT-093                                       | 1             |
| 54                       | ACHT-082                                       | 1             | ACHT-100                                       | 1             |
| 60                       | ACHT-088                                       | 1             | ACHT-102                                       | 1             |
| 64                       | ACHT-100                                       | 1             | ACHT-108                                       | 1             |
| 76                       | ACHT-102                                       | 1             | ACHT-120                                       | 1             |
| 89                       | ACHT-116                                       | 1             | ACHT-136                                       | 1             |
| 114                      | ACHT-149                                       | 1             | ACHT-156                                       | 1             |
| 140                      | ACHT-176                                       | 1             | ACHT-189                                       | 1             |
| 168                      | ACHT-214                                       | 1             | ACHT-214                                       | 1             |

## Arma-Chek Silver t-pieces pre-fabricated



Color silver, T-piece fitting (covering without insulation)

| Pipe max. Outside-Ø [mm] | AF-5<br>insulation thickness 25,0 mm - 33,0 mm |                |               |   |   |
|--------------------------|--|----------------|---------------|---|---|
|                          | Code   | Thickness [mm] | Pieces/carton |   |   |
| 18                       | ACHT-067                                       | 25             | 1             | - | - |
| 22                       | ACHT-073                                       | 25             | 1             | - | - |
| 28                       | ACHT-082                                       | 25             | 1             | - | - |
| 35                       | ACHT-093                                       | 27             | 1             | - | - |
| 42                       | ACHT-093                                       | 27             | 1             | - | - |
| 48                       | ACHT-100                                       | 27,5           | 1             | - | - |
| 54                       | ACHT-102                                       | 28,5           | 1             | - | - |
| 60                       | ACHT-116                                       | 29             | 1             | - | - |
| 64                       | ACHT-120                                       | 29             | 1             | - | - |
| 76                       | ACHT-128                                       | 30             | 1             | - | - |
| 89                       | ACHT-140                                       | 30,5           | 1             | - | - |
| 114                      | ACHT-169                                       | 33             | 1             | - | - |
| 140                      | ACHT-194                                       | 33             | 1             | - | - |
| 168                      | ACHT-245                                       | 33             | 1             | - | - |

## Arma-Chek Silver t-pieces pre-fabricated



Color black, Elastomeric pre-fabricated T-pieces

| Pipe max. Outside-Ø [mm] | AF-2<br>insulation thickness |                |                     |               | AF-4<br>insulation thickness |                |                     |               |
|--------------------------|------------------------------|----------------|---------------------|---------------|------------------------------|----------------|---------------------|---------------|
|                          | Code                         | Thickness [mm] | Article description | Pieces/carton | Code                         | Thickness [mm] | Article description | Pieces/carton |
| 15                       | AF-2-015-T90 ●               | 11,5           | 2 segment           | 3             | AF-4-015-T90 ●               | 17             | 2 segment           | 3             |
| 18                       | AF-2-018-T90 ●               | 11,5           | 2 segment           | 3             | AF-4-018-T90 ●               | 17,5           | 2 segment           | 3             |
| 22                       | AF-2-022-T90 ●               | 12             | 2 segment           | 3             | AF-4-022-T90 ●               | 18             | 2 segment           | 3             |
| 28                       | AF-2-028-T90 ●               | 12,5           | 2 segment           | 3             | AF-4-028-T90 ●               | 19             | 2 segment           | 3             |
| 35                       | AF-2-035-T90 ●               | 13             | 2 segment           | 3             | AF-4-035-T90 ●               | 19,5           | 2 segment           | 3             |
| 42                       | AF-2-042-T90 ●               | 13,5           | 2 segment           | 3             | AF-4-042-T90 ●               | 20             | 2 segment           | 3             |
| 48                       | AF-2-048-T90 ●               | 13,5           | 2 segment           | 3             | AF-4-048-T90 ●               | 21             | 2 segment           | 3             |
| 54                       | AF-2-054-T90 ●               | 13,5           | 2 segment           | 3             | AF-4-054-T90 ●               | 21             | 2 segment           | 3             |
| 60                       | AF-2-060-T90 ●               | 14             | 2 segment           | 3             | AF-4-060-T90 ●               | 21,5           | 2 segment           | 3             |
| 64                       | AF-2-064-T90 ●               | 14             | 2 segment           | 3             | AF-4-064-T90 ●               | 21,5           | 2 segment           | 3             |
| 76                       | AF-2-076-T90 ●               | 14             | 2 segment           | 3             | AF-4-076-T90 ●               | 22             | 2 segment           | 3             |
| 89                       | AF-2-089-T90 ●               | 14,5           | 2 segment           | 3             | AF-4-089-T90 ●               | 22             | 2 segment           | 3             |

| Pipe max. Outside-Ø [mm] | AF-5<br>insulation thickness |                |                     |               |   |   |   |   |
|--------------------------|------------------------------|----------------|---------------------|---------------|---|---|---|---|
|                          | Code                         | Thickness [mm] | Article description | Pieces/carton |   |   |   |   |
| 18                       | AF-5-018-T90 ●               | 25             | 2 segment           | 3             | - | - | - | - |
| 22                       | AF-5-022-T90 ●               | 25             | 2 segment           | 3             | - | - | - | - |
| 28                       | AF-5-028-T90 ●               | 25             | 2 segment           | 3             | - | - | - | - |
| 35                       | AF-5-035-T90 ●               | 27             | 2 segment           | 3             | - | - | - | - |
| 42                       | AF-5-042-T90 ●               | 27             | 2 segment           | 3             | - | - | - | - |
| 48                       | AF-5-048-T90 ●               | 27,5           | 2 segment           | 3             | - | - | - | - |
| 54                       | AF-5-054-T90 ●               | 28,5           | 2 segment           | 3             | - | - | - | - |
| 60                       | AF-5-060-T90 ●               | 29             | 2 segment           | 3             | - | - | - | - |
| 64                       | AF-5-064-T90 ●               | 29             | 2 segment           | 3             | - | - | - | - |
| 76                       | AF-5-076-T90 ●               | 30             | 2 segment           | 3             | - | - | - | - |
| 89                       | AF-5-089-T90 ●               | 30,5           | 2 segment           | 3             | - | - | - | - |

### Thickness tolerance

AF-1, AF-2: ± 1,0 mm  
 AF-3, AF-4: ± 1,5 mm  
 AF-5: ± 2,5 mm  
 AF-6: ± 3,0 mm

### Remark

Other items can be produced make to order.

- Item not in stock. Delivery on request. [MTO]



## Arma-Chek Silver tapes self-adhesive



Covering Color silver, Composite aluminium tape

| Code                   | Width [mm] | Length [m] | Thickness [mm] | Rolls/carton |
|------------------------|------------|------------|----------------|--------------|
| <b>ACH-PSATAPES-30</b> | 30,0       | 25         | 0.08           | 10           |
| <b>ACH-PSATAPES-50</b> | 50,0       | 50         | 0.08           | 6            |

