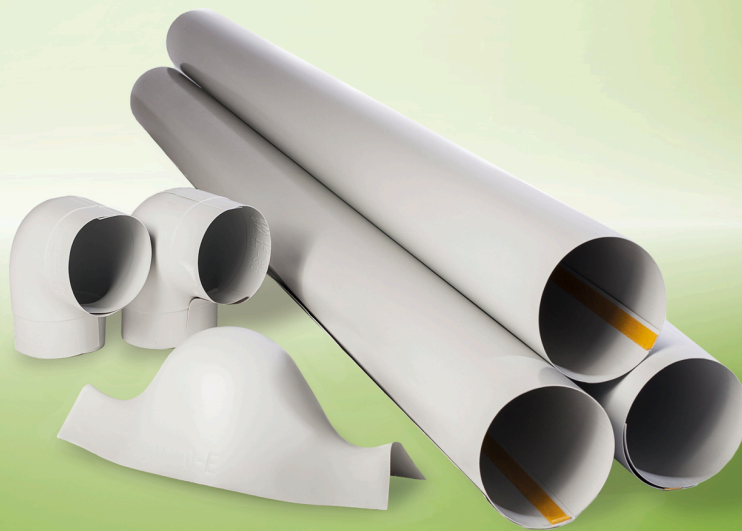


Okapak[®]

HIGH-CLASS PVC CLADDING



- Extensive range with bends, T-pieces and foils
- Impact-resistant, durable cladding
- Clever inventory reduction due to multiple Okapak bend combinations
- Made in Germany

OVERVIEW TWO-PIECE (WELDED) ELBOWS

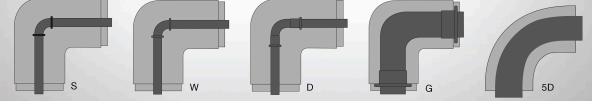
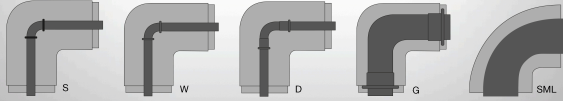
Ø	20 mm	25 mm	30 mm	35 mm	40 mm	45 mm	50 mm	60 mm	80 mm	100 mm
15										
17										
21										
27										
33										
38										
42										
44										
48										
57										
60										
64										
70										
76										
83										
89										
102										
108										
114										
127										
133										
140										
159										
168										
194										
219										
267										

S
 W
 D
 G
 SML
 45°

OVERVIEW ONE-PIECE ELBOWS

Ø	20 mm	25 mm	30 mm	35 mm	40 mm	45 mm	50 mm	60 mm	80 mm	100 mm
15										
17										
21										
27										
33										
38										
42										
44										
48										
57										
60										
64										
70										
76										
83										
89										
102										
108										
114										
127										
133										
140										
159										
168										
194										
219										
267										

Se
 We
 De
 Ge
 5D



OKAPAK 90° TWO-PIECE BENDS

Two piece bends with strengthening welded back for perfect fitting. Overview of different application areas, depending on pipe radius and type:

Okapak S bends: Bends for standard application S shaped seamless stell pipe according to EN 10253-1, type 3 (1,5 d) with insulation ≤ 100 mm.

Okapak W bends: Bends for standard application W shaped angled tempered cast fittings according to EN 10242, A1, A4 with insulation ≤ 50 mm.

Okapak D bends: Bends for application D shaped short tempered cast fittings according to EN 10242, D1, D4 with insulation ≤ 50 mm.

Okapak G bends: Bends for application G shaped long tempered cast fittings according to EN 10242, G1, G4, G8 with insulation ≤ 30 mm.

Okapak SML: Bends for application of cast iron pipes with insulation ≤ 40 mm.

OKAPAK 90° ONE-PIECE BENDS

Overview of different application areas, depending on pipe radius and type:

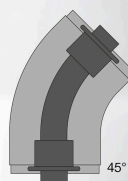
Okapak S bends: Bends for standard application S shaped seamless stell pipe according to EN 10253-1, type 3 (1,5 d) with insulation ≤ 100 mm.

Okapak W bends: Bends for standard application W shaped angled tempered cast fittings according to EN 10242, A1, A4 with insulation ≤ 50 mm.

Okapak D bends: Bends for application D shaped short tempered cast fittings according to EN 10242, D1, D4 with insulation ≤ 60 mm.

Okapak G bends: Bends for application G shaped long tempered cast fittings according to EN 10242, G1, G4, G8 with insulation ≤ 50 mm.

Okapak 5D bends: Bends for application 5D shaped long insulated tempered cast fittings according to DIN2605-1 with insulation ≤ 50 mm.



OKAPAK 45° TWO-PIECE BENDS

Okapak 45°, welded bends with back strengthening perfectly match bends according to DIN 2605, Norm 3 (1,5 d) with insulation ≤ 50 mm.

Technical Data - Okapak

Brief description	Economic coating system according to DIN 4140.
Material type	Shock resistant hard PVC foil with fire protection equipment. Surface: semigloss and smooth
Colour	light grey
Product Range	Rolls, bends, fitting caps, valve caps, flange caps, front caps, cut-outs and complete accessories
Applications	Jacket for insulated pipes (incl. bends, branches, fittings, flanges, o.s.) for protection of damages of mechanical stress.
Special Features	No weakening of insulating thickness of bends.
Manufacturing	Sheeting calender method, extruding; straight vacuum forming. Manufactured without metals cadmium, lead, mercury, chrome and their compound, without use of silicone, unplasticised

Property	Value/Assessment	Test ^{*1}	Special Remark
Temperature Range			
Temperature Range	max. service temperature	+60 °C	If the object is correctly insulated and no direct contact exists to the jacket, the medium temperature can essentially be higher or lower.
	min. service temperature	-20 °C	
Water vapour diffusion resistance			
Water vapour diffusion resistance	μ	approx. 60.000	Tested according to DIN 53122-1
Fire performance			
Reaction to fire	Okapak SE	Low flammability (DIN 4102-B1)	D 5598 D 5599 Tested according to DIN 4102
	Okapak	Moderately flammable (DIN 4102-B2)	
Other technical features			
Density	Okapak SE 1,43 ± 0,02 g/cm ³ Okapak 1,39 ± 0,02 g/cm ³		Tested according to DIN EN ISO 1183
Biological / chemical behaviour	Aging resistance: good. Stability against usual building materials: very good. Against chemicals: see separate list.		
Tensile impact strength	≥ 400 KJ/m ²		Tested according to DIN EN ISO 8256
Tensile strength	> 35 N/mm ²		Tested according to DIN EN ISO 527
Health aspects	Physiologically harmless, even when used in food processing plants. Odourless.		

*1 Further documents such as test certificates, approvals and the like can be requested using the registration number given.

All data and technical information are based on results achieved under typical application conditions. Recipients of this information should, in their own interest and responsibility, clarify with us in due time whether or not the data and information apply to the intended application area.

Okapak bends, 90°, two-pieces (welded)



Pipe max. Outside-Ø [mm]	20,0 mm			25,0 mm		
	Code	Application angle type	Pieces/carton	Code	Application angle type	Pieces/carton
15	PB1720	S,W	440	-	-	-
17	PB1720	S,W	440	PB2720	S,W,D	300
17	PB2120	G	360	-	-	-
21	PB2120	S,W,D,G	360	PB3320	S,W,D,G	240
27	PB2720	S,W,D,G	300	PB2725	S,W,D,G	240
33	PB3320	S,W,D	240	PB3325	S,W,D	220
38	PB2130	S	260	PB4820	S	240
42	PB2130	S,W,D	260	PB3330	S,W,D	220
44	PB2130	S,W,D	260	PB3330	S,W,D	220
48	PB4820	S,W	240	PB4825	S,W,D	180
57	PB6020	S	180	PB6025	S	160
60	PB6020	S,W,G	180	PB6025	S,W,G	160
60	PB6420 ●	D	160	PB6425 ●	D	160
64	PB6420 ●	S	160	PB6425 ●	S	160
70	PBS7020 ●	S	140	PB7025 ●	S	120
76	PB7025 ●	S	120	PB4840	W	120
76	-	-	-	PBS7625 ●	S	120
83	PBS8325 ●	S	120	PBS8325 ●	S	120
89	PBS8325 ●	S	120	PB6040	W	80
89	-	-	-	PB8925 ●	S	80
102	PBS10820 ●	S	60	-	-	-
108	PBS10820 ●	S	60	-	-	-
114	PBS10830	S	80	-	-	-

Pipe max. Outside-Ø [mm]	30,0 mm			35,0 mm		
	Code	Application angle type	Pieces/carton	Code	Application angle type	Pieces/carton
17	PB2725	S,D,G	240	-	-	-
17	PBW1730	W	240	-	-	-
21	PB2130	S,D	260	-	-	-
21	PBW2130	W	260	-	-	-
27	PB2730	S,W	260	-	-	-
33	PB3330	S,W	220	PB4830	S	160
38	PB4430	S	160	-	-	-
42	PB4430	S,W,D	160	PB6030	S	160
42	PB6420 ●	G	160	-	-	-
44	PB4430	S,W,D	160	PB6030	S	160
44	PB6420 ●	G	160	-	-	-
48	PB4830	S,W,D	160	PB6030	S	160
57	PB6030	S	160	PB6040	S	80
60	PB6030	S,W	160	PB6040	S	80
60	PB7025 ●	D	120	-	-	-
64	PBS6430 ●	S	140	PBS7035 ●	S	80
70	PBS7630	S	80	PBS7035 ●	S	80
76	PBS7630	S	80	PBS7040 ●	S	80
76	PBW7630	W	100	-	-	-
83	PBS8930	S	80	PBS8935 ●	S	80
89	PBS8930	S	80	PBS8935 ●	S	80
89	PBW8930	W	80	-	-	-
102	PBS10830	S	80	PBS10835	S	40
108	PBS10830	S	80	PBS10835	S	40
114	PBS10835	S	40	PBS11435 ●	S	40
127	PBS13330	S	40	PBS13335	S	40
133	PBS13330	S	40	PBS13335	S	40

Okapak bends, 90°, two-pieces (welded)



Pipe max. Outside-Ø [mm]	40,0 mm			45,0 mm		
	Code	Application angle type	Pieces/carton	Code	Application angle type	Pieces/carton
15	PB1740 ●	S,W	180	-	-	-
17	PB1740 ●	S,W	180	-	-	-
21	PB2140	S,W	160	-	-	-
27	PB2740	S,W	160	-	-	-
33	PB3340	S,W	160	-	-	-
38	PB6030	S	160	-	-	-
42	PB4240	S,W,D	120	-	-	-
44	PB4240	S,W,D	120	-	-	-
48	PB4840	S,D	120	PB6040	S	80
48	PBW4840	W	120	-	-	-
57	PB6040	S	80	PBW8930	S	80
60	PB6040	S,D	80	PBW8930	S	80
64	PBS7040 ●	S	80	PBS7045 ●	S	40
70	PBS7040 ●	S	80	PBS7045 ●	S	40
76	PB7640	S,W	60	PBS7050 ●	S	60
83	PBS8940	S	40	PBS6060	S	60
89	PBS8940	S	40	PBS6060	S	60
89	PBW8940	W	40	-	-	-
102	PBS10840	S	40	PBS11440	S	40
108	PBS10840	S	40	PBS11445 ●	S	40
114	PBS11440	S	40	PBS11445 ●	S	40
114	PBW11440	W	40	-	-	-
127	PBS13340	S	40	PBS13345 ●	S	40
133	PBS13340	S	40	PBS13345 ●	S	40
140	PBS14040	S	30	PBS14045 ●	S	40
159	PBS15940	S	60	PBS15945 ●	S	60
168	PBS16840	S	60	PBS15950	S	40

Pipe max. Outside-Ø [mm]	50,0 mm			60,0 mm		
	Code	Application angle type	Pieces/carton	Code	Application angle type	Pieces/carton
17	-	-	-	PB7670	S	40
33	PB3350	S,W	80	-	-	-
42	PB4250	S,W	80	-	-	-
44	PB4250	S,W	80	-	-	-
48	PBS4850	S	60	-	-	-
57	PB6050	S	60	PBS6060	S	60
60	PB6050	S,W,D	60	PBS6060	S	60
64	PBS7050 ●	S	60	PBS6460 ●	S	40
70	PBS7050 ●	S	60	PBS7660	S	40
76	PB7650	S,W	40	PBS7660	S	40
83	PB8950	S	40	PBS8960 ▲	S	40
89	PB8950	S,W	40	PBS8960 ▲	S	40
102	PBS10850	S	40	PBS10860 ▲	S	40
108	PBS10850	S	40	PBS10860 ▲	S	40
114	PBS11450	S	40	PBS11460 ▲	S	40
114	PBW11450	W	40	-	-	-
127	PBS13350	S	60	PBS13360 ▲	S	40
133	PBS13350	S	60	PBS13360 ▲	S	40
140	PBS14050	S	60	PBS14060 ▲	S	40
159	PBS15950	S	40	PBS15960	S	40
168	PBS16850	S	40	PBS16860	S	40
194	PBS19450 ●	S	40	PBS19460 ●	S	40
219	PBS21950	S	40	PBS21960	S	40
267	-	-	-	PBS26760 ●	S	40

Okapak bends, 90°, two-pieces (welded)



Pipe max. Outside- Ø [mm]	80,0 mm			100,0 mm		
	Code	Application angle type	Pieces/carton	Code	Application angle type	Pieces/carton
17	PB7670	S	40	-	-	-
70	PBS7680	S	40	-	-	-
76	PBS7680	S	40	-	-	-
83	PBS8980 ▲	S	40	-	-	-
89	PBS8980 ▲	S	40	-	-	-
102	PBS10880 ▲	S	40	PBS108100 ▲	S	40
108	PBS10880 ▲	S	40	PBS108100 ▲	S	40
114	PBS11480 ▲	S	40	PBS114100 ▲	S	40
127	PBS13380 ▲	S	40	PBS133100 ▲	S	40
133	PBS13380 ▲	S	40	PBS133100 ▲	S	40
140	PBS14080 ▲	S	40	PBS140100 ▲	S	40
159	PBS15980 ●▲	S	40	PBS159100 ▲	S	40
168	PBS16880 ▲	S	40	PBS168100 ▲	S	40
194	PBS19480 ●▲	S	40	PBS194100 ●▲	S	20
219	PBS21980 ▲	S	20	PBS219100 ▲	S	20
267	PBS26780 ●▲	S	20	PBS267100 ●▲	S	20

▲ Segment-similar form

● Item not in stock. Delivery on request. [MTO]

Okapak bends 90° SML two-pieces (welded)



Nominal width DN	20,0 mm		30,0 mm	
	Code	Pieces/carton	Code	Pieces/carton
40	PB4820	240	PB4830	160
50	-	-	PB6030	160
50	PB6020	180	-	-
50	PB6030	160	PBW7630	100
100	PB7640	60	PB7650	40
125	PB8950	40	PBW11440	40
125	PBW11450	40	PBS7680	40

Nominal width DN	40,0 mm			
	Code	Pieces/carton		
40	PBW4840	120	-	-
50	PB6040	80	-	-
70	PB6050	60	-	-
100	PBW11440	40	-	-
125	PBW11450	40	-	-
150	PBS8980 ▲	40	-	-

▲ Segment-similar form

Okapak bends 45° two-piece (welded)



Pipe max. Outside-Ø [mm]	20,0 mm		25,0 mm	
	Code	Pieces/carton	Code	Pieces/carton
21	PB452120	400	-	-
27	PB452720	300	PB452725	250
33	PB453320	260	PB453325	200
42	-	-	PB454225	140
44	-	-	PB454225	140
48	-	-	PB454825	180
60	-	-	PB456025	160

Okapak bends 45° two-piece (welded)



Pipe max. Outside-Ø [mm]	30,0 mm		40,0 mm	
	Code	Pieces/carton	Code	Pieces/carton
27	PB452730	250	-	-
33	-	-	PB453340	160
42	PB454230	160	-	-
44	PB454230	160	-	-
48	-	-	PB454840	160
60	PB456030	160	PB456040	160
76	PB457630	140	PB457640	120
89	PB458930	140	PB458940	100

Pipe max. Outside-Ø [mm]	50,0 mm			
	Code	Pieces/carton		
60	PB456050	140	-	-
76	PB457650	100	-	-
83	PB8950	40	-	-
89	PB458950	100	-	-
127	PBS13350	60	-	-

Okapak bends 90° one-piece



Pipe max. Outside-Ø [mm]	20,0 mm			25,0 mm		
	Code	Application angle type	Pieces/carton	Code	Application angle type	Pieces/carton
15	-	-	-	PBS2720E	S	450
17	PBS1720E	S,W,D,G,5D	500	PBS2720E	S,W,5D	450
21	PBS2120E	S,W,D,G,5D	400	PBS2125E	S,W	500
21	-	-	-	PBS3320E	5D	450
27	PBS2720E	S,W,D,G,5D	450	PBS2725E	S,W	400
33	PBS2125E	W	500	PBS2730E	S,W	300
33	PBS3320E	S,D,G	450	-	-	-
38	PBS2725E	S	400	PBS2730E	S	300
42	PBS2730E	W	300	PBS1740E ●	W	300
42	PBS4220E	S,D,G	500	PBS3330E	S	300
42	-	-	-	PBS6020E	5D	200
44	PBS2730E	S,W	300	PBS1740E ●	W	300
44	PBS4220E	D,G	500	PBS3330E	S	300
44	-	-	-	PBS6020E	5D	200
48	PBS2730E	W	300	PBS2140E ●	W	300
48	PBS4820E ●	S,D	300	PBS4230E	S	400
57	PBS6020E	S	200	PBS4830E	S	300
60	PBS2140E ●	W	300	PBS3340E	W	200
60	PBS6020E	S,D	200	PBS4830E	S	300
64	PBS4830E	S	300	PBS6030E	S	300
70	PBS7020E ●	S	300	PBS6030E	S	300
76	PBS1750E ●	W	200	PBS2750E ●	W	200
76	PBS6030E	S	300	PBS7625E ●	S	200
83	PBS7625E ●	S	200	PBS8920E	S	180
89	PBS3350E	W	180	PBS4250E	W	100
89	PBS8920E	S	180	PBS8925E ●	S	180
102	PBS10220E ●	S	100	PBS11420E ●	S	100
108	PBS10220E ●	S	100	PBS11420E ●	S	100
114	PBS11420E ●	S	100	PBS10230E ●	S	100
114	PBW6050E ●	W	100	-	-	-
133	-	-	-	PBS14025E ●	S	100
140	-	-	-	PBS14025E ●	S	100
159	-	-	-	PBS15925E ●	S	50
168	-	-	-	PBS16825E ●	S	50

Okapak bends 90° one-piece



Pipe max. Outside-Ø [mm]	30,0 mm			35,0 mm		
	Code	Application angle type	Pieces/carton	Code	Application angle type	Pieces/carton
15	PBS2725E	S	400	PBS2730E	S	300
17	PBS2725E	S,W,D,G,5D	400	PBS2730E	S	300
21	PBS2130E	S,W,D,G	300	PBS1740E ●	S	300
21	PBS4220E	5D	500	-	-	-
27	PBS2730E	S,W,D,G,5D	300	PBS1740E ●	S	300
33	PBS1740E ●	W	300	PBS2740E ●	S	200
33	PBS3330E	S,D,G	300	-	-	-
33	PBS6020E	5D	200	-	-	-
38	PBS4230E	S	400	PBS3340E	S	200
42	PBS4230E	S,D,G	400	PBS3340E	S	200
42	PBS4830E	5D	300	-	-	-
44	PBS2740E ●	S	200	PBS3340E	S	200
44	PBS4230E	D,G	400	-	-	-
44	PBS4830E	5D	300	-	-	-
48	PBS2740E ●	W	200	PBS6030E	S	300
48	PBS4830E	S,G	300	-	-	-
57	PBS6030E	S	300	PBS4840E	S	200
60	PBS2150E	W	200	PBS7630E	S	180
60	PBS6030E	S,D,G	300	-	-	-
64	PBS4840E	S	200	PBS7630E	S	180
70	PBS7630E	S	180	PBS6040E	S	180
76	PBS10220E ●	G	100	PBS8930E	S	180
76	PBS3350E	W	180	-	-	-
76	PBS7630E	S	180	-	-	-
83	PBS8925E ●	S	180	PBS7640E	S	100
89	PBS4850E	W	100	PBS7640E	S	100
89	PBS8930E	S	180	-	-	-
102	PBS10230E ●	S	100	PBS11430E	S	100
108	PBS10230E ●	S	100	PBS11430E	S	100
114	PBS11430E	S	100	PBS10240E ●	S	100
133	PBS14025E ●	S	100	PBS14030E	S	50
140	PBS14030E	S	50	-	-	-
159	PBS16825E ●	S	50	-	-	-
168	PBS16830E	S	50	-	-	-

Okapak bends 90° one-piece



Pipe max. Outside-Ø [mm]	40,0 mm			45,0 mm		
	Code	Application angle type	Pieces/carton	Code	Application angle type	Pieces/carton
15	PBS1740E ●	S	300	-	-	-
17	PBS1740E ●	S,W,D,G,5D	300	-	-	-
21	PBS2140E ●	S,W,D,G,5D	300	PBS1750E ●	S	200
27	PBS2740E ●	S,W,D,G	200	PBS1750E ●	S	200
27	PBS4830E	5D	300	-	-	-
33	PBS1750E ●	W	200	PBS2750E ●	S	200
33	PBS3340E	S,D,G	200	-	-	-
33	PBS7020E ●	5D	300	-	-	-
38	PBS1750E ●	S	200	PBS3350E	S	180
42	PBS2150E	S,W,D	200	PBS3350E	S	180
42	PBS6030E	G	300	-	-	-
42	PBS7625E ●	5D	200	-	-	-
44	PBS2150E	W,D	200	PBS3350E	S	180
44	PBS2750E ●	S	200	-	-	-
44	PBS6030E	G	300	-	-	-
44	PBS7625E ●	5D	200	-	-	-
48	PBS2750E ●	W	200	PBS4250E	S	100
48	PBS4840E	S,D,G	200	-	-	-
48	PBS8920E	5D	180	-	-	-
57	PBS6040E	S	180	PBS4850E	S	100
60	PBS10220E ●	5D	100	PBS7640E	S	100
60	PBS6040E	S,D,G	180	-	-	-
60	PBW6040E ●	W	180	-	-	-
64	PBS4850E	S	100	PBS7640E	S	100
70	PBS7640E	S	100	PBS6050E	S	100
76	PBS11420E ●	G	100	PBS4860E ●	S	100
76	PBS4260E ●	W	100	-	-	-
76	PBS7640E	S	100	-	-	-
83	PBS8940E	S	100	PBS7650E	S	100
89	PBS4860E ●	W	100	PBS8950E	S	100
89	PBS8940E	S	100	-	-	-
102	PBS10240E ●	S	100	PBS11440E	S	100
108	PBS11440E	S	100	PBS11440E	S	100
114	PBS11440E	S	100	PBS10250E ●	S	50
133	PBS11450E	S	50	PBS14040E	S	50
140	PBS14040E	S	50	-	-	-
159	PBS15940E ●	S	50	-	-	-
168	PBS16840E ●	S	25	-	-	-

Okapak bends 90° one-piece



Pipe max. Outside-Ø [mm]	50,0 mm			60,0 mm		
	Code	Application angle type	Pieces/carton	Code	Application angle type	Pieces/carton
15	PBS1750E ●	S	200	-	-	-
17	PBS1750E ●	S,W,D,G,5D	200	-	-	-
21	PBS2150E	S,W,D,G,5D	200	-	-	-
27	PBS2750E ●	S,W,D,G,5D	200	-	-	-
33	PBS3350E	S,W,D,G	180	-	-	-
33	PBS7630E	5D	180	-	-	-
38	PBS4250E	S	100	-	-	-
42	PBS4250E	S,D,G	100	PBS4260E ●	S,D	100
42	PBS4850E	5D	100	-	-	-
42	PBW4250E ●	W	100	-	-	-
44	PBS4250E	D,G	100	PBS4260E ●	D	100
44	PBS4850E	S,5D	100	PBS4860E ●	S	100
44	PBW4250E ●	W	100	-	-	-
48	PBS4850E	S,D	100	PBS4860E ●	S,D	100
48	PBS7640E	G	100	-	-	-
48	PBS8930E	5D	180	-	-	-
48	PBW4850E ●	W	100	-	-	-
57	PBS6050E	S	100	PBS7650E	S	100
60	PBS6050E	S,D,G	100	PBS6060E ●	S,D	100
60	PBS8940E	5D	100	-	-	-
60	PBW6050E ●	W	100	-	-	-
64	PBS4860E ●	S	100	PBS6060E ●	S	100
70	PBS7650E	S	100	PBS7660E	S	100
76	PBS11430E	G	100	PBS7660E	S	100
76	PBS7650E	S	100	-	-	-
83	PBS8950E	S	100	PBS8960E ●	S	100
89	PBS8950E	S	100	PBS8960E ●	S	100
102	PBS10250E ●	S	50	PBS10260E ●	S	50
108	PBS10250E ●	S	50	PBS10260E ●	S	50
114	PBS11450E	S	50	PBS11460E ●	S	50
133	PBS14050E ●	S	25	PBS14060E ●	S	25
140	PBS14050E ●	S	25	PBS14060E ●	S	25

Pipe max. Outside-Ø [mm]	80,0 mm			100,0 mm		
	Code	Application angle type	Pieces/carton	Code	Application angle type	Pieces/carton
70	PBS7670E ●	S	100	-	-	-
76	PBS7670E ●	S	100	-	-	-
83	PBS8980E ●	S	60	-	-	-
89	PBS8980E ●	S	60	-	-	-
102	PBS10280E ●	S	50	PBS102100E ●	S	30
108	PBS10280E ●	S	50	PBS114100E ●	S	30
114	PBS11480E ●	S	50	PBS114100E ●	S	30
133	PBS14080E ●	S	25	PBS140100E ●	S	25
140	PBS14080E ●	S	25	PBS140100E ●	S	25
168	-	-	-	PBS168100E ●	S	50

● Item not in stock. Delivery on request. [MTO]

Okapak branches



20,0 mm insulation thickness			
Pipe diameter main section [mm]	Pipe diameter Junction [mm]	Code	Pcs./collar
27	21	PBA2721 ●	10
33	21	PBA3321 ●	10
33	27	PBA3327 ●	10
33	33	PBA3333 ●	10
42	21	PBA4221 ●	10
42	27	PBA4227 ●	10
42	33	PBA4233 ●	10
48	27	PBA4827 ●	10
48	33	PBA4833 ●	10
48	42	PBA4842 ●	10
60	27	PBA6027 ●	10
60	33	PBA6033 ●	10
60	42	PBA6042 ●	10
60	48	PBA6048 ●	10

● Item not in stock. Delivery on request. [MTO]

Okapak valve caps



type: for straight line valves and inclined seat valves, without insulation layer, with integrated pressure closure

Diameter [mm]	Length [mm]	Without insulation layer	
		Code	Pieces/carton
90	190	PVK1 ●	25
120	255	PVK2 ●	25
155	323	PVK3 ●	25

● Item not in stock. Delivery on request. [MTO]

Okapak flange caps



type: without insulation, with integrated pressure closure

Diameter [mm]	Length [mm]	Without insulation layer	
		Code	Pieces/carton
150	145	PFK15	25
160	150	PFK20	25
180	150	PFK25	25
190	155	PFK32	25
200	155	PFK40	25
220	155	PFK50	25
250	165	PFK65	25
270	170	PFK80	25
300	170	PFK100	25
345	170	PFK125	25

Okapak rosette endcapping



Length 5,0 m, material: aluminium AL99,5, surface smoothly

Light-grey with 2 fixing grooves				Aluminium with 2 fixing grooves			
Lamella length [mm]	Insulation thickness [mm]	Code	Rolls/carton	Lamella length [mm]	Insulation thickness [mm]	Code	Rolls/carton
18	20,0	PEMBG18B	10	18	20,0	PEMBA18B	10
28	30,0	PEMBG28B	10	28	30,0	PEMBA28B	10
38	40,0	PEMBG38B	10	38	40,0	PEMBA38B	10
48	50,0	PEMBG48B	10	48	50,0	PEMBA48B	10
58	60,0	PEMBG58B	10	58	60,0	PEMBA58B	10

Okapak rivets



Color white or grey, type: rivets

Code	Article description	Pieces/bag	Pieces/carton
PMN W	rivet, white	1000	50000
PMNG	rivet, grey	1000	50000

Okapak riveting tools



type: riveting tools

Code	Article description	Pieces/bag	Pieces/carton
PMNWG	riveting tool, straight	10	100
PMNWW	riveting tool, angular	10	100

Okapak foils



material: Okapak SE foil

Code	Thickness of material [mm]	Roll width [mm]	m ² /pallet	Rolls/pallet
PF251	0.35	1000	1250	50
PFSE251	0.35	1000	1250	50

Okapak foils cut-outs



Width 1.000,0 mm, material: PVC-foil cut-outs SE DIN 4102-B1 available with 20% surcharge. Material thickness: 0.35 MM

PZA - with strong latch effect					PZB - with self-seal cap and strong latch effect				
max. total outer diameter with 30 mm overlapping	Cut-out length	Code	Pcs./collar	Pieces/carton	max. total outer diameter with 30 mm overlapping	Cut-out length	Code	Pcs./collar	Pieces/carton
-	-	-	-	-	60	220	PZB22	10	400
65	240	PZA24	10	400	65	240	PZB24	10	400
70	260	PZA26	10	400	70	260	PZB26	10	400
82	290	PZA29	10	400	82	290	PZB29	10	400
89	310	PZA31	5	200	89	310	PZB31	5	200
95	330	PZA33	5	200	95	330	PZB33	5	200
100	350	PZA35	5	200	100	350	PZB35	5	200
105	360	PZA36	5	200	105	360	PZB36 ●	5	200
-	-	-	-	-	110	380	PZB38 ●	5	1
124	420	PZA42 ●	5	1	124	420	PZB42 ●	5	1
-	-	-	-	-	130	440	PZB44 ●	5	1
-	-	-	-	-	136	460	PZB46 ●	5	1
150	500	PZA50 ●	5	1	-	-	-	-	-
165	550	PZA55 ●	5	1	165	550	PZB55 ●	5	1
-	-	-	-	-	180	600	PZB60 ●	5	1
-	-	-	-	-	195	650	PZB65 ●	5	1
229	750	PZA75 ●	5	1	-	-	-	-	-
-	-	-	-	-	308	1000	PZB100 ●	5	1

Remark

The specified dimensions are available in packaging units. Delivery ex stock 1-2 workdays from receipt of order. Other cuts-outs and packing units on request.

- Item not in stock. Delivery on request. [MTO]

Okapak tapes self-adhesive



Length 25,0 m, Color light grey, type: plastic tape

Code	Width [mm]	Length [m]	Thickness [mm]	Rolls/carton
PSKB19 •	19,0	25	0,35	32
PSKB25	25,0	25	0,35	24
PSKB30	30,0	25	0,35	20
PSKB50	12,0	25	0,35	12

• Item not in stock. Delivery on request. [MTO]

