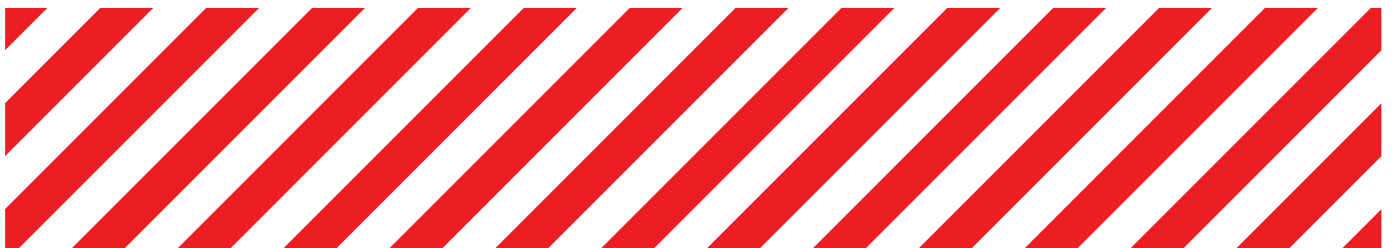
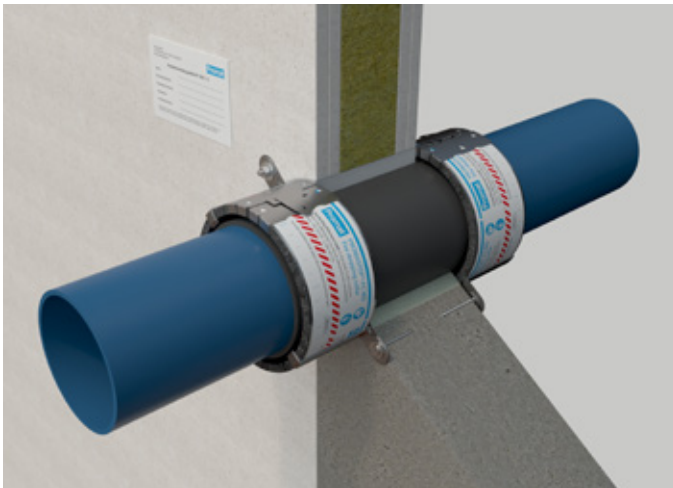
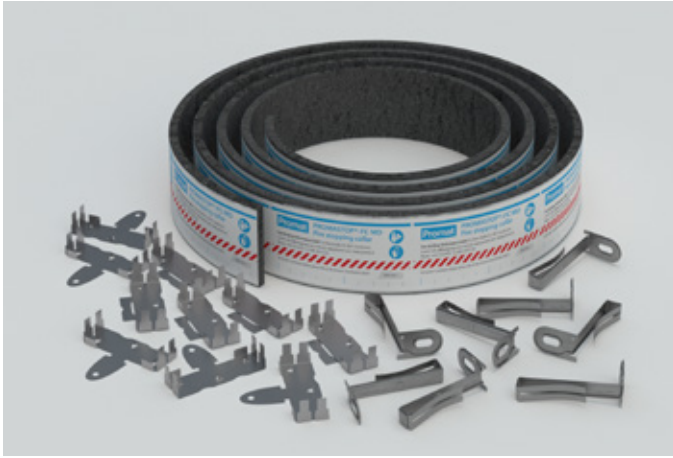


PROMASTOP®-FC MD Fire stopping collar Product handling guideline

Penetration seal



PROMASTOP®-FC MD Fire stopping collar



PROMASTOP®-FC MD is a multi-diameter fire stopping collar for plastic pipes with a special intumescent seal and a stainless steel covering. The collar is tested according to EN 1366-3 for open end pipe configurations (U/U) up to \varnothing 125 mm.

General information

- PROMASTOP®-FC MD is suitable for surface-mounted conditions.
- For wall penetrations, the collars must be installed on both sides of the light partition or solid wall. For penetrations through solid floors, the collars should be placed only on the underside of the floor.
- The collars can be fixed to a rigid substrate (concrete, solid brick, stone, aerated concrete, masonry, block etc.) by using supplied mounting brackets (type C) and concrete screws \varnothing 6 mm, l = 50 mm.
- Where collars are fixed to drywall constructions, the fixing must consist of minimum M6 threaded rods, which pass through the entire thickness of the partition construction; the collars are held into place by the use of nuts and washers onto each end of threaded rods.
- PROMASTOP®-FC MD is suitable for pipe diameters of 40 to 125 mm (for pipe material please refer to classification report).

System installation details

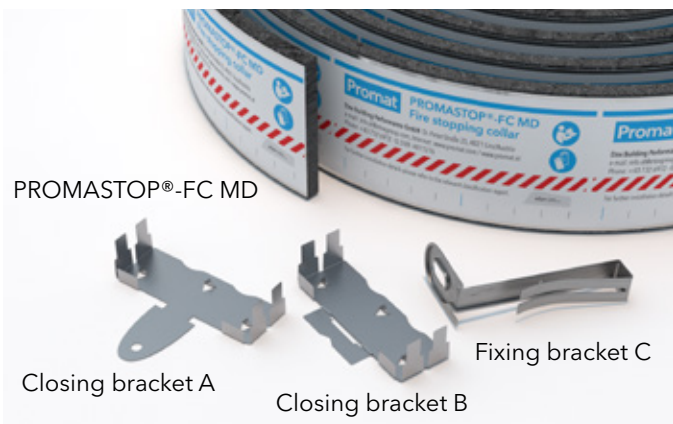
Please refer to ETA, classification report or Handbook for installation details.

Safety information

Safety information sheet available on request.



ATTENTION! Wear working gloves at all time to avoid the risk to get cut by sharp edges!

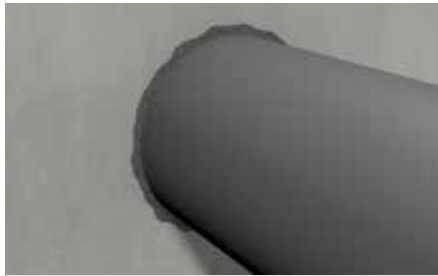


| Pipe outer diameter (mm) | Collar length (mm) | Number of collars from one package | Number of brackets required |
|--------------------------|--------------------|------------------------------------|-----------------------------|
| 40 | 225 | 14 | 2 |
| 50 | 255 | 12 | 2 |
| 64 | 300 | 10 | 3 |
| 75 | 335 | 9 | 3 |
| 90 | 380 | 8 | 3 |
| 110 | 445 | 7 | 3 |
| 125 | 490 | 6 | 4 |

Installation guideline: 40-125 mm one layer



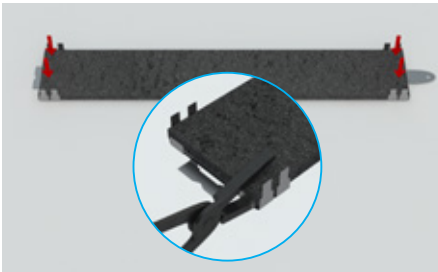
1. Clean around the opening, in the penetration and the plastic pipe if needed to ensure a smooth and dust free surface.



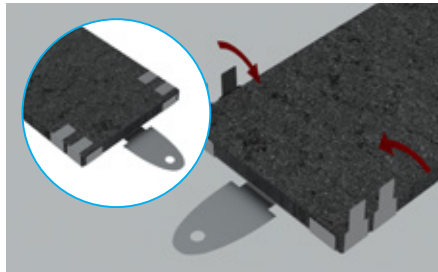
2. Fill the opening around the pipe with PROMASTOP®-M fire-resistant mortar (solid walls and floors) or plaster (only with light partition walls).



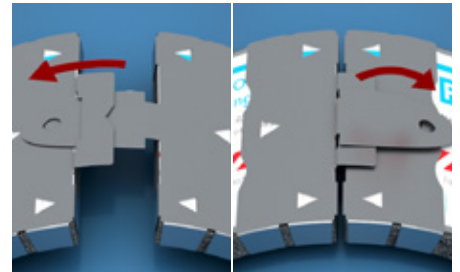
3. Cut to size according to table on page 2 with suitable tool - measuring tape and shears (scissors) or cutter;



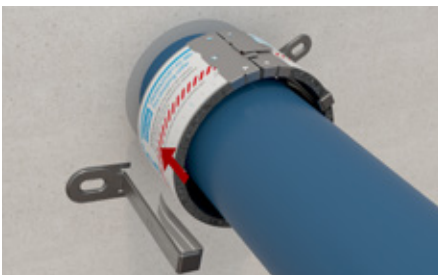
4. Place the strip on a surface. The intumescent part has to be visible. Fix the closing bracket A on one end of the strip and B on the other end e.g. by using tongs (when you hear a clicking sound, then the brackets are correctly attached);



5. Bend the small brackets on the side by 90° (using tongs). We recommend to fix on the remaining strip another closing bracket to ensure a save strip end.



6. Fix the collar around the pipe with the metal foil outside by inserting closing bracket A through closing bracket B and bend the latch by 180°.



7. Install the fixing brackets C over the collar and place evenly around the collar.



8. Fix the collar with M6 or M8 threaded rods (light partition walls), for rigid walls and floors use concrete screws (Ø 6 mm, l = 50 mm) or anchors.

Bulgaria

Etex Building Performance S.A.

Str. Vulturilor Nr. 98, 5th Floor
030857 Bucharest, Romania
M +359 878 81 51 05
E info.bg@promat-see.com
www.promat-see.com

Croatia, Bosnia and Herzegovina

Etex Building Performance

Promat d.o.o., Podružnica Zagreb

Kovinska 4a
10090 Zagreb
T +385 1 349 63 24
F +385 1 379 41 54
E info.hr@promat-see.com
www.promat-see.com

Greece

Etex Building Performance S.A.

Str. Vulturilor Nr. 98, 5th Floor
030857 Bucharest, Romania
T +40 31 224 01 00
F +40 31 224 01 01
E info@promat-see.com
www.promat-see.com

Hungary

Etex Building Performance

M +36 30 343 2572
M +36 30 455 1273
M: +36 30 541 8316
E info.hu@promat-see.com
www.promat-see.com

Kosovo, Albania

Etex Building Performance Sh.A.

Ulpiana, D-1, HY-4 Nr.2
10000 Prishtina
T +383 38 553 407
M +381 64 61 39 763
M +377 44 120 671
E info@promat-see.com
www.promat-see.com

Romania

Etex Building Performance S.A.

Str. Vulturilor Nr. 98, 5th Floor
030857 Bucharest
T +40 31 224 01 00
F +40 31 224 01 01
E info.ro@promat-see.com
www.promat-see.com

Serbia, Macedonia, Montenegro

Etex Building Performance d.o.o.

Vojvode Putnika 79
21208 Sremska Kamenica
T +381 21 210 10 90
M +381 63 625 426
M +381 63 510 720
E info.rs@promat-see.com
www.promat-see.com

Slovakia

Etex Building Performance

EBM Co. s.r.o.

Štúrova 155
949 01 Nitra
M +421 915 936 126
E info.sk@promat-see.com
www.promat-see.com

Slovenia

Etex Building Performance

Promat d.o.o.

Kidričeva 56b
4220 Škofja Loka
T +386 4 51 51 451
F +386 4 51 51 450
E info.si@promat-see.com
www.promat-see.com