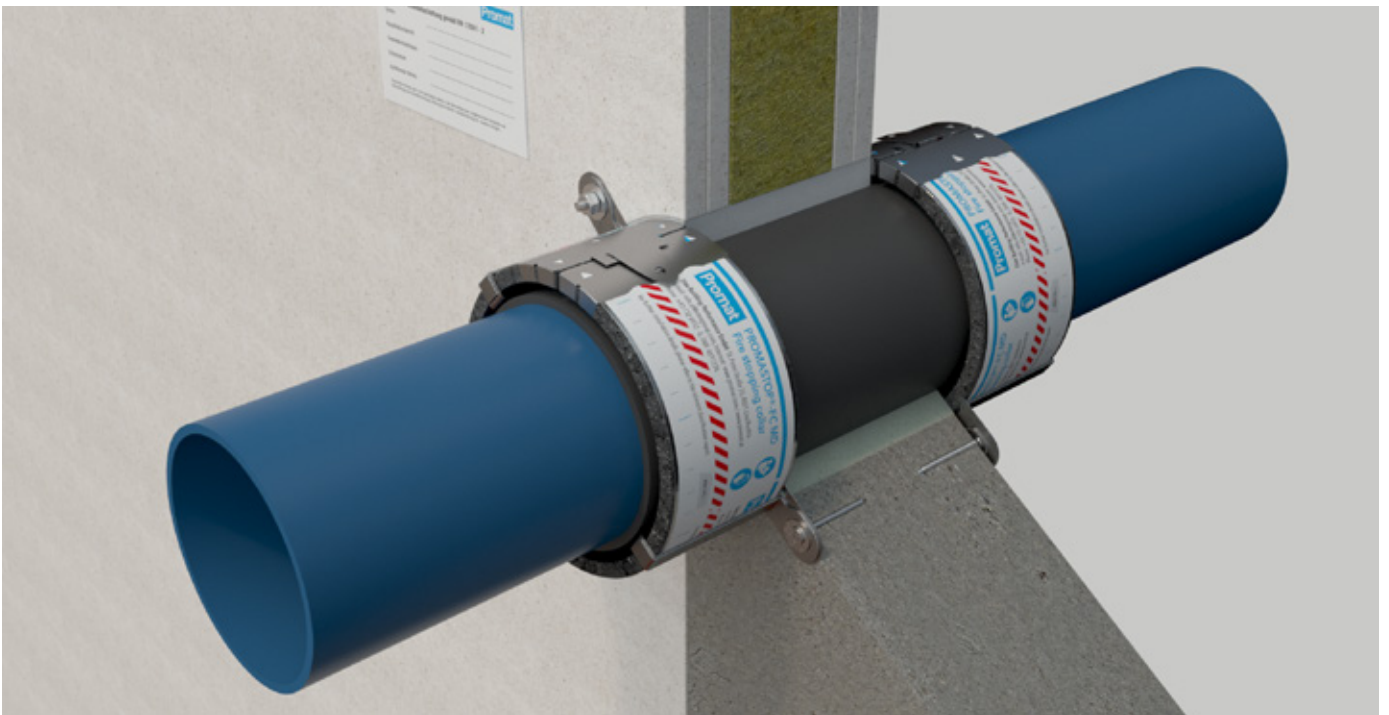


## PROMASTOP®-FC MD Fire stopping collar



[www.promat-see.com](http://www.promat-see.com)





## Product description

PROMASTOP®-FC MD is a multi-diameter fire stopping collar for plastic pipes with a special intumescent seal and a stainless steel covering. The collar is tested according to EN 1366-3 for open end pipe configurations (U/U) up to  $\varnothing$  125 mm.

## Field of application

PROMASTOP®-FC MD fire stopping collar is tested for plastic pipe penetrations through light partition and solid walls and floors in surface-mounted condition, ensuring fire resistance from EI 30 to EI 120 (U/U) in all exposure classes (X). It is suitable for common plastic piping materials such as PVC, PP, PE.

## System advantage / customer benefit

- Flexible collar
- Quick and easy to install
- Cut-to-size solution
- Tested on standard plastic pipes in PP, PE and PVC
- Suitable for applications in hard-to-reach places thanks to its low thickness
- Single layer up to  $\varnothing$  125 mm

## Test certificate / approval

- EN 1366-3
- EN 13501-1/2
- EAD 350454-00-1104

## Packaging

- 3200 mm collar (= 7 collars  $\varnothing$  110 mm)
- 7 closing brackets A\*
- 7 closing brackets B\*
- 21 fixing brackets C\*

Subject to change.

\* Additional fixings/brackets available.

## Storage requirements

- Store in dry conditions

## Safety instructions

- Please refer to the safety data sheet for additional advice

## Technical data and properties

Colour	anthracite grey
Consistency	flexible collar with stainless steel foil
Expansion temperature	approx. 190 °C
Thickness	approx. 5,5 mm
Width	approx. 55 mm
Use category	Class X
Reaction to fire	B-s1,d0

## Guide of collar sizes

Pipe outer diameter (mm)	Collar length (mm)	Number of collars from one package	Number of brackets required
40	225	14	2
50	255	12	2
64	300	10	3
75	335	9	3
90	380	8	3
110	445	7	3
125	490	6	4

## **Bulgaria**

### **Etex Building Performance S.A.**

Str. Vulturilor Nr. 98, 5th Floor  
030857 Bucharest, Romania  
M +359 878 81 51 05  
E [info.bg@promat-see.com](mailto:info.bg@promat-see.com)  
[www.promat-see.com](http://www.promat-see.com)

## **Croatia, Bosnia and Herzegovina**

### **Etex Building Performance**

#### **Promat d.o.o., Podružnica Zagreb**

Kovinska 4a  
10090 Zagreb  
T +385 1 349 63 24  
F +385 1 379 41 54  
E [info.hr@promat-see.com](mailto:info.hr@promat-see.com)  
[www.promat-see.com](http://www.promat-see.com)

## **Greece**

### **Etex Building Performance S.A.**

Str. Vulturilor Nr. 98, 5th Floor  
030857 Bucharest, Romania  
T +40 31 224 01 00  
F +40 31 224 01 01  
E [info@promat-see.com](mailto:info@promat-see.com)  
[www.promat-see.com](http://www.promat-see.com)

## **Hungary**

### **Etex Building Performance**

M +36 30 343 2572  
M +36 30 455 1273  
M: +36 30 541 8316  
E [info.hu@promat-see.com](mailto:info.hu@promat-see.com)  
[www.promat-see.com](http://www.promat-see.com)

## **Kosovo, Albania**

### **Etex Building Performance Sh.A.**

Ulpiana, D-1, HY-4 Nr.2  
10000 Prishtina  
T +383 38 553 407  
M +381 64 61 39 763  
M +377 44 120 671  
E [info@promat-see.com](mailto:info@promat-see.com)  
[www.promat-see.com](http://www.promat-see.com)

## **Romania**

### **Etex Building Performance S.A.**

Str. Vulturilor Nr. 98, 5th Floor  
030857 Bucharest  
T +40 31 224 01 00  
F +40 31 224 01 01  
E [info.ro@promat-see.com](mailto:info.ro@promat-see.com)  
[www.promat-see.com](http://www.promat-see.com)

## **Serbia, Macedonia, Montenegro**

### **Etex Building Performance d.o.o.**

Vojvode Putnika 79  
21208 Sremska Kamenica  
T +381 21 210 10 90  
M +381 63 625 426  
M +381 63 510 720  
E [info.rs@promat-see.com](mailto:info.rs@promat-see.com)  
[www.promat-see.com](http://www.promat-see.com)

## **Slovakia**

### **Etex Building Performance**

#### **EBM Co. s.r.o.**

Štúrova 155  
949 01 Nitra  
M +421 915 936 126  
E [info.sk@promat-see.com](mailto:info.sk@promat-see.com)  
[www.promat-see.com](http://www.promat-see.com)

## **Slovenia**

### **Etex Building Performance**

#### **Promat d.o.o.**

Kidričeva 56b  
4220 Škofja Loka  
T +386 4 51 51 451  
F +386 4 51 51 450  
E [info.si@promat-see.com](mailto:info.si@promat-see.com)  
[www.promat-see.com](http://www.promat-see.com)