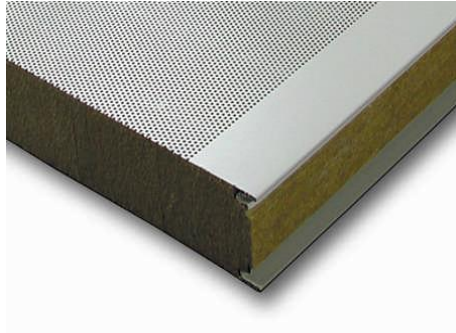


SOUND INSULATION / ABSORPTION SONODAMP SANDWICH PANEL



Thickness	Insulation mat.	R _w value	Weight
60 mm	rockwool	31 dB mm	16,3 kg/m ²
100 mm	glass wool	34 dB mm	15,7 kg/m ²

- Product description** Sonodamp is a self-supporting sound-insulating and sound-absorbing sandwich panels constructed of:
- 0.6 mm profiled steel sheet, galvanized Z275 and with 50 µm polyurethane coating as standard, corresponding to RAL color 9002 with protective foil
 - single-sheet bonded, non-combustible rockwool board cut square to the grain for the 60 mm version and non-combustible glass wool for the 100 mm version
 - 0.6 mm perforated stucco steel plate, 32.7% degree of perforation, galvanized Z275 and with 25 µm polyurethane coating as standard, corresponding to RAL color 9002 with protective foil.

- Properties**
- High level of sound insulation and sound absorption
 - Excellent thermal and fire-resistant properties
 - Suitable for outdoor use
 - Easy assembly

Application Enclosures, baffles, cabins and internal walls

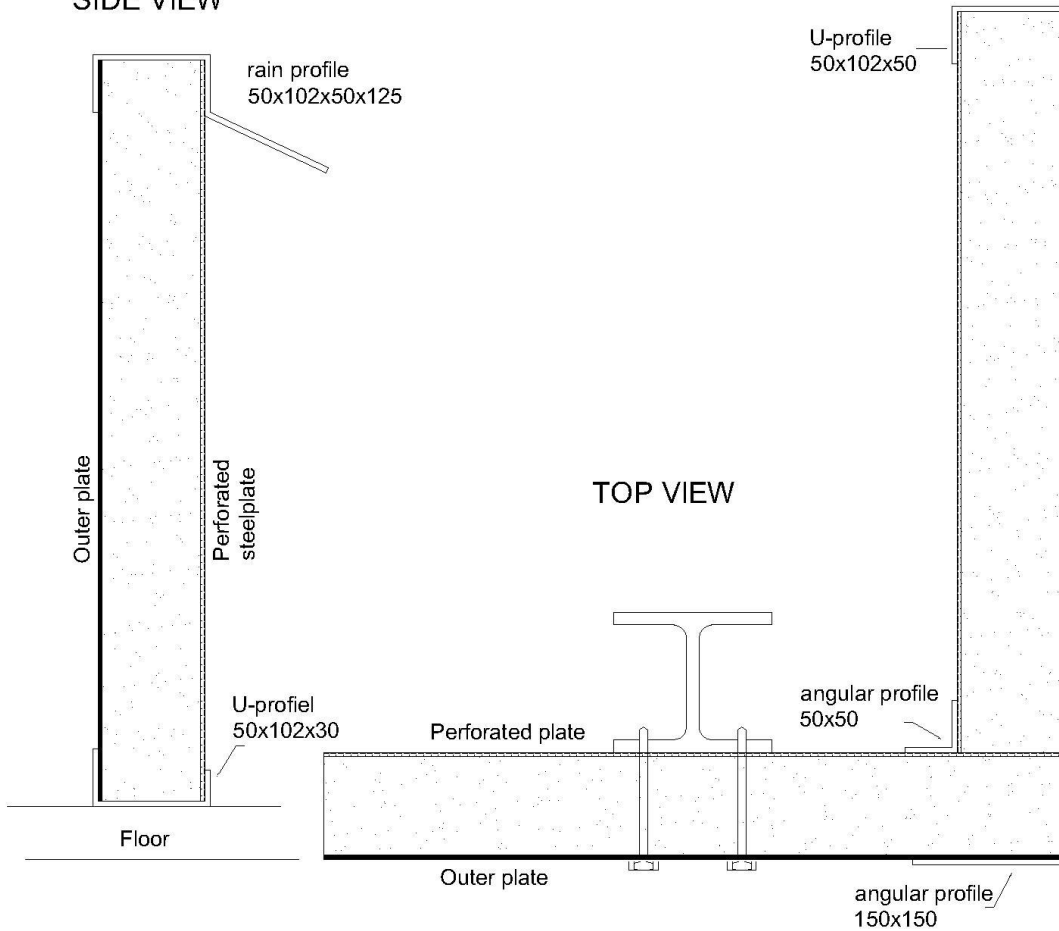
Processing Panels can be applied both vertically and horizontally
With male-female connection system
Can be cut to size with a jigsaw
Available with finishing profiles

Dimensions Stock: length 2500, 3000 and 4000 mm in 60 and 100 mm thicknesses
Tolerances: +/- 3.0 mm on thickness and width, +/- 10.0 mm on length
Other sizes and thicknesses available on request

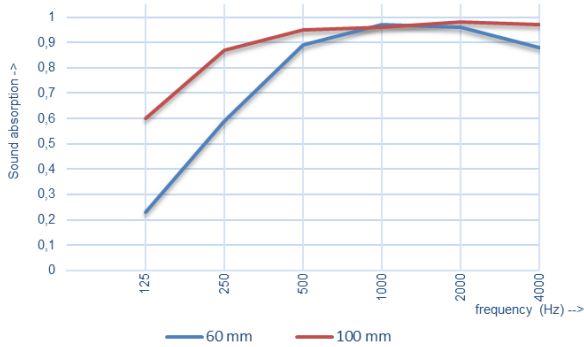
Assembly The panels are attached to the structure using self-drilling screws
The top, bottom and crosscut sides of the panels are finished with U profiles
For corner installation, corner profiles are attached to the inner and outer corners
For outside installation, we recommend to protect the tops of the panels with rain profiles and to seal the seams between the bottom profiles and panels

Example of how Sonodamp sandwich panel 100 mm is used:

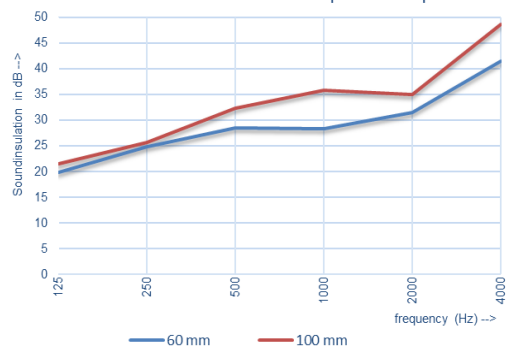
SIDE VIEW



Sound absorption Sonodamp sandwich panel



Sound insulation Sonodamp sandwich panel



Noordhoek 33, 3351 LD Papendrecht
 Postbus 14, 3350 AA Papendrecht
 T 31 (0)78 615 00 44
 info@sonic.pro

SONIQ® IS A REGISTERED **IPCOM** BRAND

WWW.SONIQ.PRO

DISCLAIMER
 De omschreven toepassingen en aanbevelingen zijn zo correct mogelijk weergegeven maar zijn vrijblijvend en bieden geen garanties. Bij twijfel over toepassing/verwerking zelf een test uitvoeren of Soniq® raadplegen. Wij behouden ons het recht om zonder kennisgeving vooraf productgegevens te wijzigen.



Noordhoek 33, 3351 LD Papendrecht
 Postbus 14, 3350 AA Papendrecht
 T 31 (0)78 615 00 44
 info@soniq.pro

SONIQ® IS A REGISTERED **IPCOM** BRAND

WWW.SONIQ.PRO

DISCLAIMER
 De omschreven toepassingen en aanbevelingen zijn zo correct mogelijk weergegeven maar zijn vrijblijvend en bieden geen garanties. Bij twijfel over toepassing/verwerking zelf een test uitvoeren of Soniq® raadplegen. Wij behouden ons het recht om zonder kennisgeving vooraf productgegevens te wijzigen.