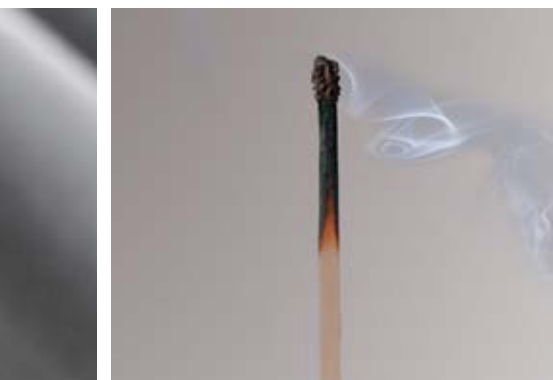


CLIMAFLEX® XT

nmcnaturefoam®



Polyethylene-based closed-cell foam pipe insulation, made of NMC Naturefoam® which contains at least 50% of renewable raw materials with self-adhesive closing system.

- Installation time reduced by 50%
- 100% safety for optimal performance
- Unique in comparison with its fire performance B₁s1d0

Product features

- Thermal conductivity (EN ISO 8497):
0,036 W/mK at 0°C
0,040 W/mK at 40°C
0,043 W/mK at 60°C
0,045 W/mK at 70°C
- Fire performance (EN 13501-1):
B₁s1d0 (thickness 9 + 13 mm)
C₁s1d0 (thickness 20 mm)
- Temperature range: 0°C to +100°C (EN 14707)
- See website for Declaration of performance: www.nmc.eu/dop



www.nmc.eu

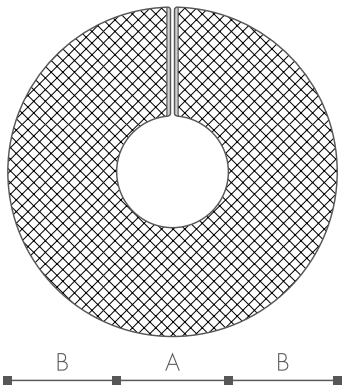
NMC reserves the right to update the product line or its technical features to the state-of-the-art technology anytime and without previous announcement. All given information is to the best of our knowledge. If you have any questions concerning technical details please contact the NMC information service. Any partial reproduction or reprint shall require our explicit approval.

NMC sa
Gert-Noël-Strasse - B-4731 Eynatten - Belgium
Phone: +32 87 85 85 00
Fax: +32 87 85 83 55
E-Mail: info@nmc.eu



CLIMAFLEX® XT

nmc nature foam®



CLIMAFLEX® XT has approved self-adhesive strips, which reduce the processing time of previously installed pipes by up to 50%. Simply peel off the protective film, press down and it's done.

Because of its low thermal conductivity, CLIMAFLEX® XT reduces the loss of heat from distributors in plumbing and heating installations by up to 80%. This maximizes not only the cost efficiency, but also the ecological efficiency of the entire unit.

CLIMAFLEX® XT provides solutions that follow all necessary guidelines for any type of installation.

CLIMAFLEX® XT is a foam product with sound absorbing properties, reducing pop and flow noises in pipes.

Polyethylene foam is a cost-efficient material with outstanding insulating properties. Products made of PE foam yield an excellent cost/performance ratio.

For installation, please note the details in our processing instructions.

Storage of self-adhesive products should not exceed one year. The storage area should be dry and maintain a constant temperature of +5 °C to +25 °C.

Range of products

Copper CU		Steel FE			Syntehtics MSV & PEX					
NW	outer Ø	NW	outer Ø		outer Ø	Type	A	B	Length	Density
DN	mm	DN	mm	inch	mm		mm	mm		
10	15	8	13,5	1/4	-	12/15 x 9	12/15	9	2m	300m
15	18	10	17,2	3/8	16	18 x 9	18	9	2m	300m
20	22	15	21,3	1/2	20	22 x 9	22	9	2m	250m
25	28	20	26,9	3/4	25	28 x 9	28	9	2m	190m
32	35	25	33,7	1	32	35 x 9	35	9	2m	150m
40	42	32	42,4	1 1/4	40	42 x 9	42	9	2m	110m
-	-	40	48,3	1 1/2	-	48 x 9	48	9	2m	90m
50	54	-	54	-	50	54 x 9	54	9	2m	70m
10	15	8	13,5	1/4	-	12/15 x 13	12/15	13	2m	200m
15	18	10	17,2	3/8	16	18 x 13	18	13	2m	190m
20	22	15	21,3	1/2	20	22 x 13	22	13	2m	160m
25	28	20	26,9	3/4	25	28 x 13	28	13	2m	130m
32	35	25	33,7	1	32	35 x 13	35	13	2m	102m
40	42	32	42,4	1 1/4	40	42 x 13	42	13	2m	84m

CLIMAFLEX® XT

nmcnaturefoam®

Copper CU		Steel FE			Syntehtics MSV & PEX		A	B	Length	Density
NW DN	outer Ø mm	NW DN	outer Ø mm	outer Ø inch	outer Ø mm	Type	mm	mm		
-	-	40	48,3	1 1/2	-	48 x 13	48	13	2m	70m
50	54	-	54	-	50	54 x 13	54	13	2m	60m
-	-	50	60,3	2	-	60 x 13	60	13	2m	48m
65	76,1	65	76,1	2 1/2	-	76 x 13	76	13	2m	40m
80	88,9	80	88,9	3	-	89 x 13	89	13	2m	30m
-	-	-	101,6	3 1/2	-	102 x 13	102	13	2m	24m
20	22	15	21,3	1/2	20	22 x 20	22	20	2m	108m
25	28	20	26,9	3/4	25	28 x 20	28	20	2m	96m
32	35	25	33,7	1	32	35 x 20	35	20	2m	70m
40	42	32	42,4	1 1/4	40	42 x 20	42	20	2m	60m
-	-	40	48,3	1 1/2	-	48 x 20	48	20	2m	48m
50	54	-	54	-	50	54 x 20	54	20	2m	48m
-	-	50	60,3	2	-	60 x 20	60	20	2m	40m

Alternative products

CLIMAFLEX®

nmcnaturefoam®



Polyethylene-based closed-cell foam pipe insulation, made of NMC Naturefoam® which contains at least 50% of renewable raw materials.

CLIMAFLEX® ROLL



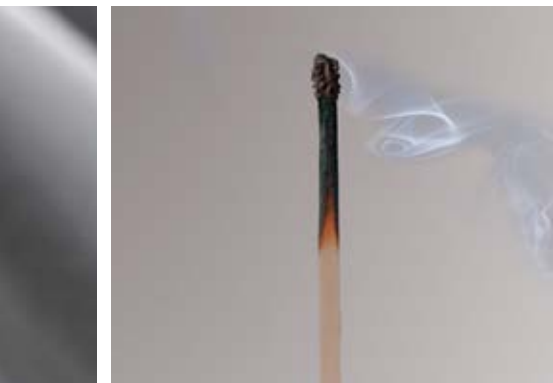
Closed-cell, cross-linked polyethylene foam insulation sheets for use in heating and plumbing.

CLIMAFLEX® STABIL

nmcnaturefoam®



Polyethylene-based, closed-cell foam pipe insulation, made of NMC Naturefoam® which contains at least 50% of renewable raw materials, with a robust protective coating for use in heating and plumbing. CLIMAFLEX® STABIL 04mm is available with red, as well as blue protective coating.



www.nmc.eu

NMC sa
Gert-Noël-Strasse - B - 4731 Eynatten - Belgium
Phone: +32 87 85 85 00
Fax: +32 87 85 83 55
E-Mail: info@nmc.eu

