

# Armafix® AF

PRE-INSULATED AF/ARMAFLEX® PIPE SUPPORTS FOR A COMPLETE  
CONDENSATION CONTROL SOLUTION



- Euroclass B-s3, d0 and high resistance to water vapour transmission ( $\mu$  10,000)
- NEW! 100% recycled ArmaFORM PET inserts with closed cell comb structure for improved load bearing capacity
- Easy installation thanks to self-adhesive closure

## ARMAFIX AF

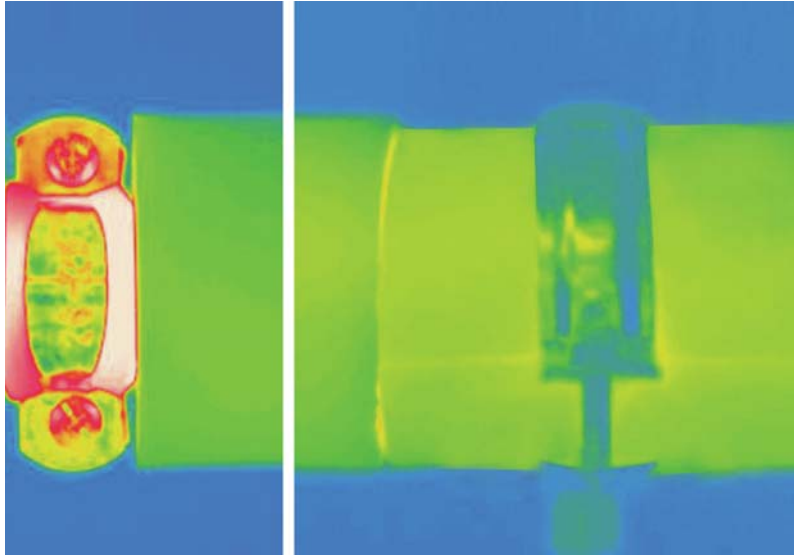
Pipe brackets represent a potential weak point in insulation systems. If the pipe isn't thermally isolated from the pipe bracket, thermal bridges occur and condensation can form. This leads to increased energy losses and the risk of corrosion and secondary damage. To prevent thermal bridges, direct contact between the pipe and its bracket should therefore be avoided.

Armafix AF pipe supports, in combination with AF/Armaflex Class 0 are the key for a perfectly enclosed insulation system on refrigeration installations.

### PREVENTING THERMAL BRIDGES

AF/Armafix thermally isolates the pipe and bracket from each other. Installed together with AF/Armaflex tubes or sheet it guarantees an insulation system that provides long-term reliability in cold applications.

Armafix AF pipe supports are load bearing PET segments embedded in AF/Armaflex closed cell insulation material, with two outer shells made of aluminium sheeting. With its built-in water vapour barrier and self-adhesive secure joint on both sides, thermal bridging and condensation are prevented to ensure energy is not lost at fixings points.



### COMBI-PACK

The Armafix AF pipe supports are also available in convenient combination packs, including pipe supports with matching clamps.



### DUCT SUPPORT

Armafix AF duct supports are also available to thermally decouple ductwork from hanging brackets. The supports are 2 metres long, providing a tailored solution for duct sizes.



## Technical Data - Armafix AF

Brief description	Insulated pipe and duct support system for refrigeration and air conditioning installations to prevent thermal bridging and condensation forming at pipe support fixing points. Single piece assembly with 2 ArmaFORM PET foam load bearing inserts (RG 100 kg/m <sup>3</sup> ) embedded in Armaflex insulation with self-adhesive closure. Armafix dimensions match Armaflex tube/sheet ranges.
Material type	PET foam bearing segments, embedded in and glued to Armaflex elastomeric foam material. Outside bearing shells made from painted aluminium sheeting 0.8mm thick.
Colour	Dark grey
Material Special Information	Traces of silicon can be found on the protective film used on the self-adhesive closures. Please contact our customer services for details.
Applications	Insulated pipe and duct supports to prevent thermal and acoustic bridging at fixing points on refrigeration systems and chilled water pipes.
Safety and Environment	ODP zero GWP zero Dust & fibre free
Remarks	When used in installations with intermittent temperatures, extensions and contractions of pipework may exert pressure on the insulation installation. This needs to be considered in the overall application by ensuring suitable compression of Armaflex at joining points.

Property	Value/Assessment	Super- vision <sup>*1</sup>	Special Remarks
<b>Temperature Range</b>			
Temperature Range	Max. service temperature	+ 110 °C	
	Min. service temperature <sup>1</sup>	- 50 °C	
<b>Thermal Conductivity</b>			
Thermal Conductivity	ϑ	+/-0 °C	Declared acc. to EN ISO 13787 Tested acc. to EN 12667 EN ISO 8497
	Same as AF/ Armaflex λ ≤	0.033 w/(m · k)	
<b>Water vapour diffusion resistance</b>			
Water vapour diffusion resistance	Same as AF/Armaflex μ ≥	10,000	Tested acc. to EN 12086 and EN 13469
<b>Fire performance</b>			
Reaction to fire	Pipe Hanger: Same as Armaflex	.	Classified acc. to EN 13501-1 Tested acc. to EN 13823 EN ISO 11925-2
	Entire System with Armaflex insulation: low flammability	B / B <sub>L</sub> -s3, d0	
Practical fire behaviour	Self extinguishing, does not drip, does not spread flames.		
<b>Acoustic performance</b>			
Reduction of structure-borne sound transmission	According to insulation material used in the clamp / pipe fastener		According to DIN 4109
<b>Other technical features</b>			
Density	95 - 105 kg/m <sup>3</sup> (pipe bearing segments)		
Storage & Shelf life	Products with self adhesive closures to be installed within 1 year.		Can be stored in dry, clean rooms at normal relative humidity (50% to 70%) and ambient temperature (0 °C – 35 °C).

1. For temperatures below -50 °C please contact our Technical Department to request the corresponding technical information.

\*1 ●: Official supervision by independent institutes and /or test authorities  
○: In-house quality monitoring

## Technical Data - Armafix Clamps

Brief description	Pipe clamp with quick release closing and combination nut for mounting.
Material type	Steel with an electrolytic zinc coating to protect the clamp from corrosion.
Colour	silver
Material Special Information	Clamps supplied with combination nut for fixing to threaded rod.
Applications	For use alongside Armaflex insulation at pipe hanging points to eliminate thermal bridging on refrigeration and air-conditioning installations.

Property	Value/Assessment
<b>Fire performance</b>	
Other	The insulation layer does not affect fire performance of the steel clamp itself.
<b>Other technical features</b>	
Screw connections	M 8 / M 10 combination nut
Tension screws	M 6 and M 8
Clamp	Width 20 to 30 mm; Thickness 1.5 to 3.0 mm

All statements and technical information are based on results obtained under typical conditions. It is the responsibility of the recipient to verify with us that the information is appropriate for the specific use intended.

## Armafix AF pipe supports and clamps



One-piece pipe support with self-seal fastener, complete with 2 ArmaFORM PET insert sections (RG 100 kg/m<sup>3</sup>). Available to fit a wide range of pipe diameters. Two half round steel pipe clamps with electrolytically applied zinc coating. Maximum clamp distances apply for vertical load effects on horizontal installations with predominantly static loads. Combined slot/cross tensioning screws supplied loosely secured.

Pipe max. Outside-Ø [mm]	Armaflex tube nom. Ø mm	Max. permissible distance [m]	AF-2 insulation thickness 9,5 mm - 16,0 mm				Clamps AF-2		
			Code	Outer- Ø [mm]	Length [mm]	Pieces/ carton	Code	Pieces/ carton	
10	10	2.00	FX-2-10/12 ●	34	45	32	PCX 025/030	25	
12	10	2.00	FX-2-10/12 ●	36	45	32	PCX 025/030	25	
15	15	2.00	FX-2-15/18 ●	40	45	32	PCX 033/037	25	
18	15	2.00	FX-2-15/18 ●	43	45	32	PCX 033/037	25	
22	22	2.75	FX-2-22/25 ●	47	45	32	PCX 042/046	25	
25	22	2.75	FX-2-22/25 ●	50	45	32	PCX 042/046	25	
28	28	3.00	FX-2-28/30 ●	53	45	32	PCX 047/052	25	
30	28	3.00	FX-2-28/30 ●	56	45	32	PCX 047/052	25	
35	35	3.50	FX-2-35/38 ●	61	50	28	PCX 054/058	25	
38	35	3.50	FX-2-35/38 ●	65	50	28	PCX 054/058	25	
42	42	3.75	FX-2-42/45 ●	69	50	28	PCX 063/068	25	
45	42	3.75	FX-2-42/45 ●	72	50	28	PCX 063/068	25	
48	48	4.25	FX-2-48 ●	76	55	28	PCX 068/073	10	
54	54	4.25	FX-2-54/57 ●	82	55	28	PCX 072/080	10	
57	54	4.25	FX-2-54/57 ●	85	55	28	PCX 072/080	10	
60	60	4.75	FX-2-60/64 ●	89	65	24	PCX 082/085	10	
64	60	4.75	FX-2-60/64 ●	92	65	24	PCX 082/085	10	
70	70	4.75	FX-2-70 ●	98	65	24	PCX 092/099	10	
76	76	5.50	FX-2-76/80 ●	105	75	20	PCX 099/103	10	
80	76	5.50	FX-2-76/80 ●	109	75	20	PCX 099/103	10	
89	89	6.00	FX-2-89 ●	118	95	16	PCX 112/118	10	
102	102	6.00	FX-2-102/108 ●	134	95	16	PCX 133/137	10	
108	102	6.00	FX-2-102/108 ●	141	95	16	PCX 133/137	10	
114	114	6.00	FX-2-110/114 ●	144	115	12	PCX 137/142	10	
125	125	6.00	FX-2-125 ●	158	115	12	PCX 145/152	10	
133	133	6.00	FX-2-133/140 ●	165	115	12	PCX 159/164	10	
140	133	6.00	FX-2-133/140 ●	172	115	12	PCX 159/164	10	
160	160	6.00	FX-2-160 ●	193	115	9	PCX 190	10	
165	165	6.00	FX-2-165/168 ● <sup>1</sup>	198	125	9	PCX 199	10	
168	165	6.00	FX-2-165/168 ● <sup>1</sup>	201	125	9	PCX 199	10	

## Armafix AF pipe supports and clamps



One-piece pipe support with self-seal fastener, complete with 2 ArmaFORM PET insert sections (RG 100 kg/m<sup>3</sup>). Available to fit a wide range of pipe diameters. Two half round steel pipe clamps with electrolytically applied zinc coating. Maximum clamp distances apply for vertical load effects on horizontal installations with predominantly static loads. Combined slot/cross tensioning screws supplied loosely secured.

Pipe max. Outside-Ø [mm]	Armaflex tube nom. Ø mm	Max. permissible distance [m]	AF-4 (AF-3)* insulation thickness 15,5 mm - 25,0 mm				Clamps AF-4 (AF-3)*		
			Code	Outer- Ø [mm]	Length [mm]	Pieces/ carton	Code	Pieces/ carton	
10	10	2.00	FX-4(3)-10/12 ●	46	55	28	PCX 042/046	25	
12	10	2.00	FX-4(3)-10/12 ●	48	55	28	PCX 042/046	25	
15	15	2.00	FX-4(3)-15/18 ●	52	55	28	PCX 042/046	25	
18	15	2.00	FX-4(3)-15/18 ●	55	55	28	PCX 042/046	25	
22	22	2.75	FX-4(3)-22/25 ●	60	55	28	PCX 054/058	25	
25	22	2.75	FX-4(3)-22/25 ●	64	55	28	PCX 054/058	25	
28	28	3.00	FX-4(3)-28/30 ●	66	55	28	PCX 063/068	25	
30	28	3.00	FX-4(3)-28/30 ●	70	55	28	PCX 063/068	25	
35	35	3.50	FX-4(3)-35/38 ●	74	65	24	PCX 068/073	10	
38	35	3.50	FX-4(3)-35/38 ●	79	65	24	PCX 068/073	10	
42	42	3.75	FX-4(3)-42/45 ●	85	65	24	PCX 072/080	10	
45	42	3.75	FX-4(3)-42/45 ●	88	65	24	PCX 072/080	10	
48	48	4.25	FX-4(3)-48 ●	91	65	24	PCX 082/085	10	
54	54	4.25	FX-4(3)-54/57 ●	98	65	24	PCX 088/092	10	
57	54	4.25	FX-4(3)-54/57 ●	101	65	24	PCX 088/092	10	
60	60	4.75	FX-4(3)-60/64 ●	105	75	20	PCX 099/103	10	
64	60	4.75	FX-4(3)-60/64 ●	109	75	20	PCX 099/103	10	
70	70	4.75	FX-4(3)-70 ●	116	75	20	PCX 108/112	10	
76	76	5.50	FX-4(3)-76/80 ●	122	85	16	PCX 112/118	10	
80	76	5.50	FX-4(3)-76/80 ●	127	85	16	PCX 112/118	10	
89	89	6.00	FX-4(3)-89 ●	136	100	12	PCX 133/137	10	
102	102	6.00	FX-4(3)-102/108 ●	149	100	12	PCX 137/142	10	
108	102	6.00	FX-4(3)-102/108 ●	156	100	12	PCX 137/142	10	
114	114	6.00	FX-4(3)-110/114 ●	162	115	12	PCX 145/152	10	
125	125	6.00	FX-4(3)-125 ●	173	115	12	PCX 168/173	10	
133	133	6.00	FX-4(3)-133/140 ●	183	115	12	PCX 190	10	
140	133	6.00	FX-4(3)-133/140 ●	189	115	12	PCX 190	10	
160	160	6.00	FX-4(3)-160 ●	210	115	6	PCX 206	10	
165	165	6.00	FX-4(3)-165/168 ● <sup>1</sup>	216	125	6	PCX 222	10	
168	165	6.00	FX-4(3)-165/168 ● <sup>1</sup>	219	125	6	PCX 222	10	

## Armafix AF pipe supports and clamps



One-piece pipe support with self-seal fastener, complete with 2 ArmaFORM PET insert sections (RG 100 kg/m<sup>3</sup>). Available to fit a wide range of pipe diameters. Two half round steel pipe clamps with electrolytically applied zinc coating. Maximum clamp distances apply for vertical load effects on horizontal installations with predominantly static loads. Combined slot/cross tensioning screws supplied loosely secured.

Pipe max. Outside-Ø [mm]	Armaflex tube nom. Ø mm	Max. permissible distance [m]	AF-6 insulation thickness 32,0 mm - 45,0 mm				Clamps AF-6		
			Code	Outer- Ø [mm]	Length [mm]	Pieces/ carton	Code	Pieces/ carton	
15	15	2.00	FX-6-15/18 ●	74	75	20	PCX 068/073	10	
18	15	2.00	FX-6-15/18 ●	77	75	20	PCX 068/073	10	
22	22	2.75	FX-6-22/25 ●	80	75	20	PCX 072/080	10	
25	22	2.75	FX-6-22/25 ●	84	75	20	PCX 072/080	10	
28	28	3.00	FX-6-28/30 ●	91	75	20	PCX 082/085	10	
30	28	3.00	FX-6-28/30 ●	95	75	20	PCX 082/085	10	
35	35	3.50	FX-6-35/38 ●	104	85	16	PCX 099/103	10	
38	35	3.50	FX-6-35/38 ●	109	85	16	PCX 099/103	10	
42	42	3.75	FX-6-42/45 ●	113	85	16	PCX 099/103	10	
45	42	3.75	FX-6-42/45 ●	116	85	16	PCX 099/103	10	
48	48	4.25	FX-6-48 ●	119	85	16	PCX 112/118	10	
54	54	4.25	FX-6-54/57 ●	126	85	16	PCX 112/118	10	
57	54	4.25	FX-6-54/57 ●	129	85	16	PCX 112/118	10	
60	60	4.75	FX-6-60/64 ●	134	100	12	PCX 133/137	10	
64	60	4.75	FX-6-60/64 ●	137	100	12	PCX 133/137	10	
70	70	4.75	FX-6-70 ●	144	100	12	PCX 137/142	10	
76	76	5.50	FX-6-76/80 ●	152	115	12	PCX 137/142	10	
80	76	5.50	FX-6-76/80 ●	156	115	12	PCX 137/142	10	
89	89	6.00	FX-6-89 ●	167	125	12	PCX 159/164	10	
102	102	6.00	FX-6-102/108 ●	179	125	12	PCX 190	10	
108	102	6.00	FX-6-102/108 ●	188	125	12	PCX 190	10	
114	114	6.00	FX-6-110/114 ●	196	145	12	PCX 199	10	
125	125	6.00	FX-6-125 ●	207	145	12	PCX 206	10	
133	133	6.00	FX-6-133/140 ●	219	145	8	PCX 231	10	
140	133	6.00	FX-6-133/140 ●	225	145	8	PCX 231	10	
160	160	6.00	FX-6-160 ●	248	145	6	PCX 249	10	
165		6.00	FX-6-165/168 ● <sup>1</sup>	254	165	5	PCX 259	10	
168		6.00	FX-6-165/168 ● <sup>1</sup>	257	165	5	PCX 259	10	

**Remark** Pipe supports for plastic and stainless steel pipes available on request.  
outer Ø = installation Ø

All clamps delivery on request

**Regulations** Max. permissible distance (m) according to DIN 1988

● Not a stock item. Delivery on request.

<sup>1</sup> Sheets

## Armafix AF duct supports



Code	Thickness [mm]	Width [mm]	Length [m]	Pieces/carton
AS-19MM ●	19.0	100.0	2	5
AS-25MM ●	25.0	100.0	2	4

● Not a stock item. Delivery on request.