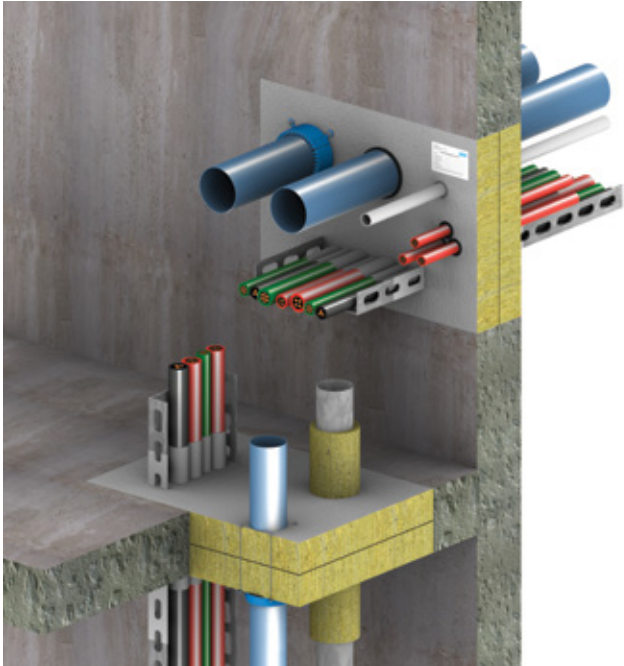


PROMASTOP®-CC Fire stopping coating Product handling guideline

Penetration seal



PROMASTOP®-CC Fire stopping coating



PROMASTOP®-CC is a water-based 'hybrid' fire stopping coating. It combines the positive qualities of intumescent and ablative coatings. In the field of fire stopping penetrations, PROMASTOP®-CC provides reliable protection against the spread of smoke, fire and heat due to its foaming effect and simultaneous formation of a hard and solid char.

General information

- Storage and transport temperature 3 °C - 35 °C;
- Minimum +5°C, maximum +40 °C for both substrate and ambient temperature;
- Stir PROMASTOP®-CC well (we recommend a mechanical mixer);
- PROMASTOP®-CC can be diluted (maximum 0,5 litre clean water to each 12,5kg bucket);
- PROMASTOP®-CC liquid can be applied with a brush, roller or a spatula;
- Once opened containers should be fully used as soon as possible; Reseal containers properly after use;
- Drying time: approx. 8 hours at 20 °C and a relative humidity of 65 % for 1 mm;
- Substrate must be free of oil, grease and dust;
- Use water to dampen and act as a primer for absorbent substrate;
- Ensure enough space around the services to install a fire stopping penetration seal, otherwise the necessary space has to be created.
- Clean tools with water after use;
- Overpainting is possible; Adhesion and compatibility must be checked separately;

System installation details

Please refer to ETA, Classification report or handbook for installation details on cables, pipes, ducts, busbar and joints.

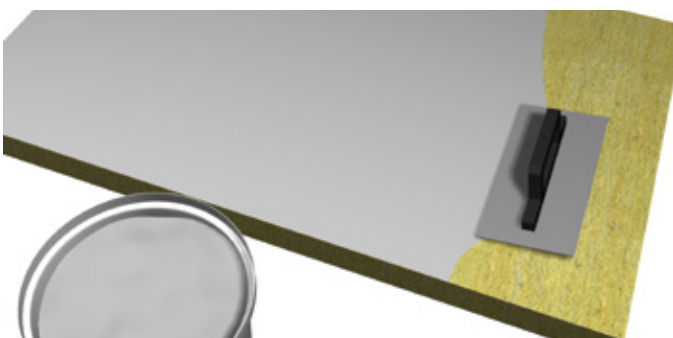
Safety information

Safety data sheet available on request.

Coating on mineral wool

Product	Dry film Thickness	Wet film thickness	Consumption
PROMASTOP®-CC liquid	0,7 mm	0,9 mm	1,35 kg/m ²
Consumption per board			
1000 x 600 mm	0,81 kg/board		
1000 x 625 mm	0,84 kg/board		

Mineral wool boards could be precoated as follows:

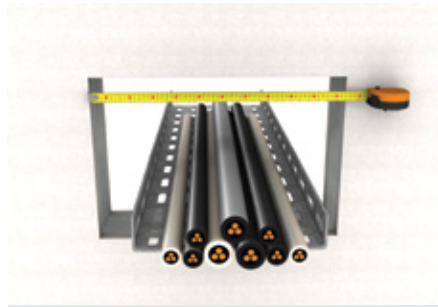


1. Apply about mentioned wet film thickness and considered drying time

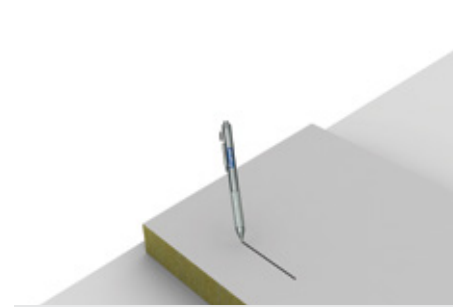
Installation guideline



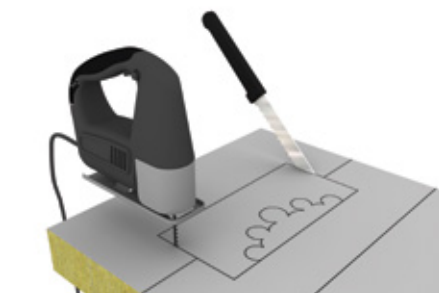
1. Clean aperture opening and penetrating services



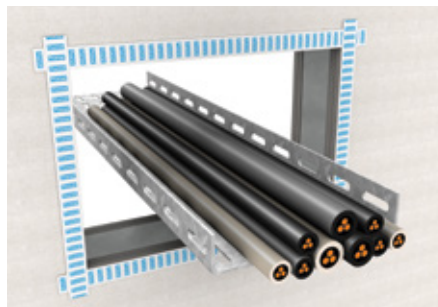
2. Measure exact dimensions of penetration



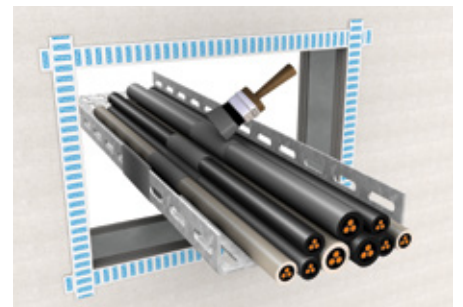
3. Transfer measurements on mineral wool



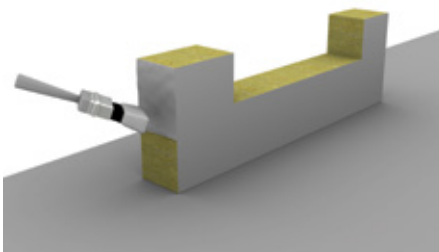
4. Cut the mineral wool boards exactly to size



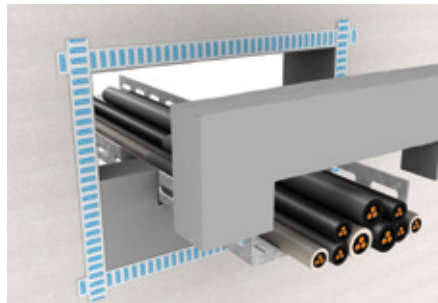
5. If required, mask out the working area on the wall and services with tape



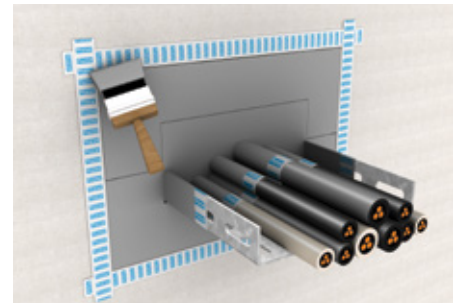
6. Fill space between cables with PROMASTOP®-CC



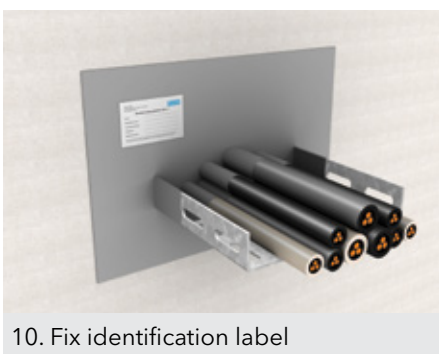
7. Coat the aperture opening and cutting edges of the mineral wool with PROMASTOP®-CC



8. Insert mineral wool boards



9. Apply final correct thickness of PROMASTOP®-CC to mineral wool (if boards are not pre-coated) and fill all remaining joints and gaps with PROMASTOP®-CC or PROMASEAL®-A; Cables need to be coated according classification report. repeat the same steps on the opposite side, if necessary.



10. Fix identification label

Note: For floor, insert an appropriate approved metal grid as foot traffic protection (below the mineral wool panels, where deemed necessary).

The products must be applied in accordance with regulations for construction material in general and fire stopping in particular, with the applicable national test certificates and approvals and in accordance with applicable national building regulations. Products may only be applied by trained professionals with adequate knowledge and only after thorough review of the installation guidelines, safety data sheets, national test certificates and approvals. For additional information on how and where to use this product please refer to the Promat handbook or contact your local Promat office. All the relevant documents can be obtained free of charge from the local Promat office. For Non European Union countries separate guidelines are relevant. If required please contact us.

Bulgaria

Etex Building Performance S.A.

Str. Vulturilor Nr. 98, 5th Floor
030857 Bucharest, Romania
M +359 878 81 51 05
E info.bg@promat-see.com
www.promat-see.com

Croatia, Bosnia and Herzegovina

Etex Building Performance

Promat d.o.o.

Kovinska 4a
10090 Zagreb
T +385 1 349 63 24
F +385 1 379 41 54
E info.hr@promat-see.com
www.promat-see.com

Greece

Etex Building Performance S.A.

Str. Vulturilor Nr. 98, 5th Floor
030857 Bucharest, Romania
T +40 31 224 01 00
F +40 31 224 01 01
E info@promat-see.com
www.promat-see.com

Hungary

Etex Building Performance

Creaton South-East Europe Kft.

Malomkő u. 7.1. emelet
2040 Budaörs
M +36 30 343 2572
M +36 30 455 1273
E info.hu@promat-see.com
www.promat-see.com

Kosovo, Albania

Etex Building Performance Sh.A.

Ulpiana, D-1, HY-4 Nr.2
10000 Prishtina
T +383 38 553 407
M +381 64 61 39 763
M +377 44 120 671
E info@promat-see.com
www.promat-see.com

Romania

Etex Building Performance S.A.

Str. Vulturilor Nr. 98, 5th Floor
030857 Bucharest
T +40 31 224 01 00
F +40 31 224 01 01
E info.ro@promat-see.com
www.promat-see.com

Serbia, Macedonia, Montenegro

Etex Building Performance d.o.o.

Vojvode Putnika 79
21208 Sremska Kamenica
T +381 21 210 10 90
M +381 63 625 426
M +381 63 510 720
E info.rs@promat-see.com
www.promat-see.com

Slovakia

Etex Building Performance

EBM Co. s.r.o.

Štúrova 155
949 01 Nitra
M +421 915 936 126
E info.sk@promat-see.com
www.promat-see.com

Slovenia

Etex Building Performance

Promat d.o.o.

Kidričeva 56b
4220 Škofja Loka
T +386 4 51 51 451
F +385 4 51 51 450
E info.si@promat-see.com
www.promat-see.com