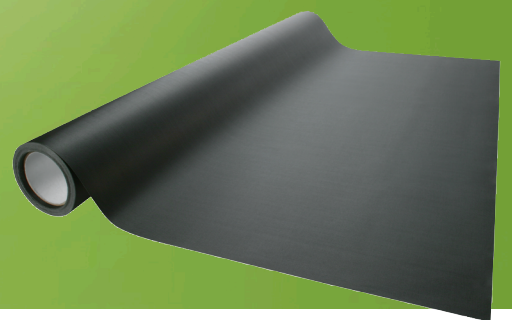


Arma-Chek® D

THE DURABLE PRECOVERED ARMAFLEX SYSTEM



- Fast installation
- Resistant to UV, oil and chemicals
- Easy to maintain
- Reduces risk of corrosion under insulation (CUI)
- Professional training provided by Armacell

Technical Data - Arma-Chek D

Brief description	Arma-Chek D is a flexible, woven glass fibre covering system for long term mechanical protection of Armaflex substrates.
Material type	Insulation: Highly flexible, closed-cell elastomeric foam material based on synthetic rubber. Covering: woven, glass fibre, dry-wrap flexible material.
Colour	black (covering)
Product Range	Arma-Chek D is available in a range of pre-insulated tubes & sheets, as well as single covering.
Applications	Insulation and protection of pipes, ducts, valves and vessels of refrigeration and air conditioning equipments, food industries, etc.
Assembly	The Armaflex and Arma-Chek installation manuals should be consulted before assembly. We offer special installation courses for the application of Arma-Chek. Please consult our Customer Service.
Remarks	Declaration of Performance is available in accordance with Article 7(3) of Regulation (EU) No 305/2011 on our homepage: www.armacell.com/DoP (Armaflex substrate)

Property	Value/Assessment	Test ^{*1}	Special Remark
Temperature Range			
Temperature Range	max. service temperature ¹ +110 °C (+85 °C if sheet or tape is glued to the object with its whole surface.) min. service temperature ² -50 °C	EU 5688	Tested acc. to EN 14706, EN 14707 and EN 14304
Thermal Conductivity			
Thermal Conductivity	Depends on the Armaflex substrate used.	EU 5688	Declared acc. to EN ISO 13787 Tested acc. to EN 12667 EN ISO 8497
Water vapour diffusion resistance			
Water vapour diffusion resistance	Depends on the Armaflex substrate used.	EU 5688	Tested according to EN ISO 12086 EN 13469
Fire performance			
Reaction to fire	Arma-Chek D (AF+ NH) E	EU 5688	Classified acc. to EN 13501-1 Tested acc. to DIN EN 13823 DIN EN ISO 11925-2
Acoustic Performance			
Reduction of structure-borne sound transmission	Depends on Armaflex substrate used.		
Other technical features			
Density	1200 kg/m ³ (covering)		
Dimensions and tolerances	In accordance with EN 14304, table 1 (Armaflex substrate)	EU 5688	Tested acc. to EN 822, EN 823, EN 13467
Resistance to mechanical impact	Good		
UV resistance ³	Excellent	TB 142	Tested according to EN ISO 4892-2 (Xenon-Test)
Health aspects	Dust and fibre free.		
Storage & Shelf life	Tape, sheets, tubes, self-adhesive: 1 year		Can be stored in dry, clean rooms at normal relative humidity (50% - 70%) and ambient temperature (0 °C – 35 °C).

1. When there are fluctuations in temperature, the surface may wrinkle slightly, as elastomeric products expand and contract in these circumstances. However, these superficial changes do not have any impact on the performance of the material. The wrinkles usually disappear as soon as the plant is heated to its original operating temperature.

2. For temperatures below -50 °C please contact our Customer Service Center to request for the corresponding technical information.

3. In outdoor applications the colour may fade. This does not have any impact on the functionality of the covering or the insulation material.

*1 Further documents such as test certificates, approvals and the like can be requested using the registration number given.

All data and technical information are based on results achieved under typical application conditions. Recipients of this information should, in their own interest and responsibility, clarify with us in due time whether or not the data and information apply to the intended application area. Installation instructions are available in our Arma-Chek installation manual. Please consult our Customer Service Center before insulating stainless steels. Armaflex 520 adhesive and Clipse must be used to guarantee proper installation.

Arma-Chek D (AF) tubes self-adhesive pre-covered



Length 1,0 m

Pipe max. Outside-Ø [mm]	AF-2 insulation thickness 11,5 mm - 16,0 mm			AF-4 Insulation thickness 17,0 mm - 25,0 mm		
	Insulation thickness [mm]	Code	m/carton	Insulation thickness [mm]	Code	m/carton
15	11,5	AFD-2-015 ●	65	17,0	AFD-4-015 ●	44
18	11,5	AFD-2-018 ●	60	17,5	AFD-4-018 ●	35
22	12,0	AFD-2-022 ●	50	18,0	AFD-4-022 ●	30
28	12,5	AFD-2-028 ●	42	19,0	AFD-4-028 ●	24
35	13,0	AFD-2-035 ●	31	19,5	AFD-4-035 ●	18
42	13,5	AFD-2-042 ●	24	20,5	AFD-4-042 ●	16
48	13,5	AFD-2-048 ●	22	21,0	AFD-4-048 ●	12
54	13,5	AFD-2-054 ●	18	21,0	AFD-4-054 ●	12
60	14,0	AFD-2-060 ●	16	21,5	AFD-4-060 ●	10
76	14,0	AFD-2-076 ●	14	22,0	AFD-4-076 ●	8
89	14,5	AFD-2-089 ●	11	22,5	AFD-4-089 ●	6
114	15,0	AFD-2-114 ○●	8	23,5	AFD-4-114 ○●	5

Pipe max. Outside-Ø [mm]	AF-5 insulation thickness 25,0 mm - 33,0 mm					
	Insulation thickness [mm]	Code	m/carton			
18	25,0	AFD-5-018 ●	21	-	-	-
22	25,0	AFD-5-022 ●	18	-	-	-
28	25,0	AFD-5-028 ●	18	-	-	-
35	27,0	AFD-5-035 ●	12	-	-	-
42	27,0	AFD-5-042 ●	11	-	-	-
48	27,5	AFD-5-048 ●	8	-	-	-
54	28,5	AFD-5-054 ●	8	-	-	-
60	29,0	AFD-5-060 ●	6	-	-	-
76	30,0	AFD-5-076 ●	5	-	-	-
89	30,5	AFD-5-089 ●	4	-	-	-
114	31,5	AFD-5-114 ○●	3	-	-	-

Length tolerance for tubes ± 1,5 %

- No self-seal fastening at the longitudinal seam
- Item not in stock. Delivery on request. [MTO]

Arma-Chek D (AF) sheets pre-covered



Length 2,0 m

Code	Insulation thickness [mm]	Width [m]	Pieces/carton	m ² /carton
AFD-13MM ●	13,0	0.5	9	9
AFD-13MM-W ●	13,0	1.0	12	24
AFD-19MM ●	19,0	0.5	7	7
AFD-19MM-W ●	19,0	1.0	8	16
AFD-25MM ●	25,0	0.5	5	5
AFD-25MM-W ●	25,0	1.0	6	12

Length tolerance for sheets ± 1,5 %

Thickness tolerance for sheets

≤ 6 mm:	±1,0 mm
7 - 19 mm:	±1,5 mm
> 19 mm:	±2,0 mm

- Item not in stock. Delivery on request. [MTO]

Arma-Chek D (NH) sheets pre-covered



Length 2,0 m

Code	Insulation thickness [mm]	Width [m]	Pieces/carton	m ² /carton
NHD-13-99 •	13,0	0,5	9	9
NHD-19-99 •	19,0	0,5	7	7
NHD-25-99 •	25,0	0,5	5	5

Length tolerance for sheets

± 1,5 %

Thickness tolerance for sheets

≤ 6 mm: ±1,0 mm

7 -19 mm: ±1,5 mm

> 19 mm: ±2,0 mm

Remark

Delivery period for surface-coated tubes 15 working days after receipt of order (ex warehouse).

- Item not in stock. Delivery on request. [MTO]

Arma-Chek D covering endless



woven glassfibre

Code	Width [mm]	Roll length [m]	Rolls/carton	m ² /carton
ACH-D25	1.100,0	25	1	27.5
ACH-D25/100	100,0	25	3	7.5

Arma-Chek D tapes self-adhesive



woven glassfibre

Code	Width [mm]	Length [m]	Thickness [mm]	Rolls/carton
ACH-TAPED2025	20,0	25	0.18	12
ACH-TAPED5050	50,0	50	0.18	6
ACH-TAPED10025	100,0	25	0.18	3

Arma-Chek D accessories



Code	Article description	Pieces/carton
ACH-MASTICD	Mastic black. Sealing compound for installing Arma-Chek outdoors, 290 ml	12