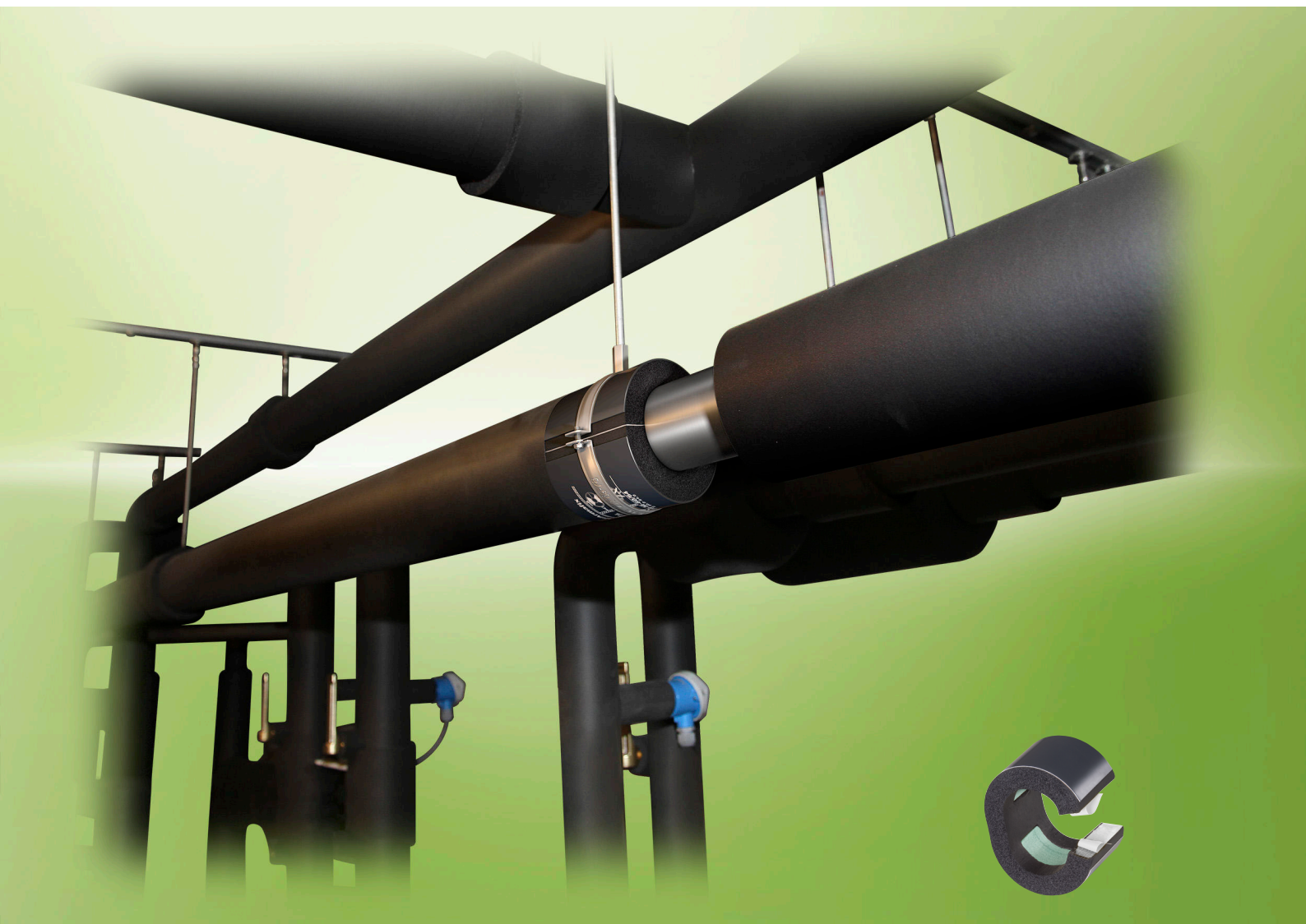


Armafix® AF

THE STEP AHEAD PIPE SUPPORT FOR
FAST INSTALLATION AND
CONDENSATION CONTROL WITH
AF/ARMAFLEX®



- Secure Euroclass B/ B_L-s3,d0 and high resistance to Water Vapour Transmission (μ 10.000) when used with AF/Armaflex
- High mechanical resistance for lower quantity of pipe hangers per installation
- Less items in stock, more pipe sizes fitted
- Easy bonding thanks to self-adhesive closure
- Built-in vapour barrier prevents thermal bridging and reduces risk of condensation
- Matching clamps presented in convenient combi-pack

STRENGTHENING THE WEAKEST LINK IN THE CHAIN

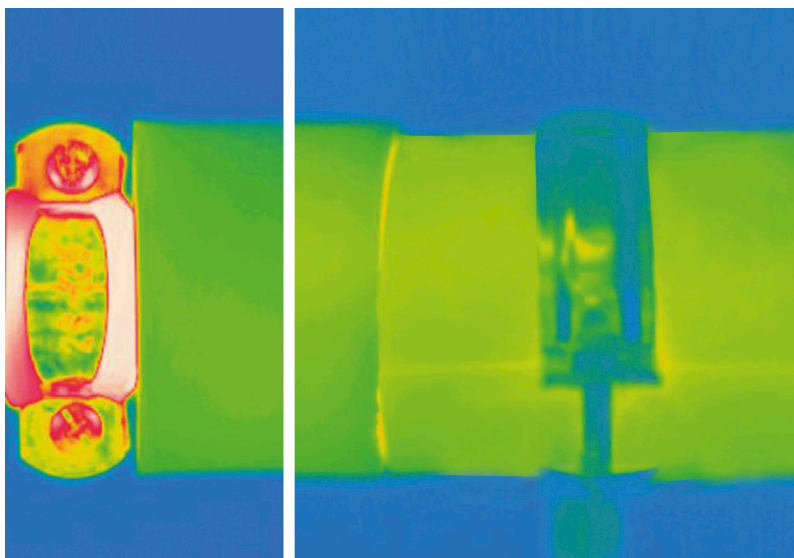
AF/Armafix thermally isolates the pipe and bracket from each other. Installed together with AF/Armaflex tubes or sheets it guarantees an insulation system that provides long-term reliability in cold applications.

Armafix AF pipe supports are load bearing PET segments embedded in AF/Armaflex closed cell insulation material, with two outer shells made of aluminium sheeting. With its built-in water vapour barrier and self-adhesive secure joint on both sides, thermal bridging and condensation are prevented to ensure energy is not lost at fixings points. Armafix has a quick and easy three step installation process to achieve a professional result whilst also saving time and money.

ARMAFIX AF

Pipe brackets represent a potential weak point in insulation work. If the pipe is not thermally isolated from the pipe bracket, thermal bridges occur and condensation can form. On the one hand, this leads to increased energy losses and, on the other hand, the risk of corrosion and the danger of expensive secondary damage rise. To prevent thermal bridges, direct contact between the pipe and its bracket should be avoided.

Armafix AF pipe supports, in combination with AF/Armaflex are the key for a perfectly enclosed insulation system on refrigeration installations.



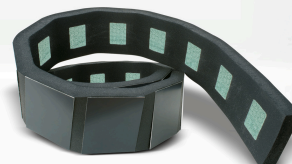
COMBI-PACK

The Armafix AF pipe supports are also available in practical combination packs. These packs include our pipe supports with matching clamps.



DUCT SUPPORT

Armafix AF duct support are specially constructed to carry and thermally decouple duct work. With a length of 2 meter, it is Armacell`s insulation product tailored for duct sizes.



Technical Data - Armafix AF

Brief description	Pipe and duct support for refrigeration and air-conditioning installations to prevent condensation at fixing points. Thermally non-interacting single piece, with 2 ArmaFORM PET foam sections and with self-adhesive closure. All dimensions are matching the AF/Armaflex tube/sheet range.
Material type	PET- foam bearing segments, embedded in and glued to AF/Armaflex elastomeric foam material. Outside bearing shells made of painted aluminium sheeting 0.8mm thick, which simultaneously serves as a vapour barrier for the PET bearing segments.
Colour	dark grey
Material Special Information	Traces of silicon can be found on protection paper/foil used to protect self-adhesive closures. Please contact our sales representatives for details.
Applications	Thermally non-interacting mounting aid for tubes/sheets in refrigeration and air-conditioning applications, which are to be insulated with AF/Armaflex.
Remarks	When used in installations with intermittent temperatures, thermal length extensions may cause inherent pressure in the installation; this needs to be considered in the overall insulation construction.

Property	Value/Assessment	Super- vision ²	Special Remark
Temperature Range			
Temperature Range	max. service temperature + 110 °C min. service temperature ¹ - 50 °C		
Thermal Conductivity			
Thermal Conductivity	Same as AF/Armaflex.	○/●	Declared acc. to EN ISO 13787 Tested acc. to EN 12667 EN ISO 8497
Water vapour diffusion resistance			
Water vapour diffusion resistance	Same as AF/Armaflex.	○/●	Tested acc. to EN 12086 and EN 13469
Fire performance			
Reaction to fire	Euroclass E Entire System with AF/Armaflex B / B _L -s3, d0	○/●	Classified acc. to EN 13501-1 Tested acc. to EN 13823 EN ISO 11925-2
Practical Fire Behaviour	Self extinguishing, does not drip, does not spread flames.		
Acoustic Performance			
Reduction of structure-borne sound transmission	According to used insulation layer in clamp / pipe fastener		According to DIN 4109
Other technical features			
Density	95 - 105 kg/m ³ (pipe bearing segments)		
Storage & Shelf life	Products with self adhesive closures to be installed within 1 year.		Can be stored in dry, clean rooms at normal relative humidity (50% to 70%) and ambient temperature (0 °C – 35 °C).

1. For temperatures below -50 °C please contact our sales representatives to request for the corresponding technical information.

*1 ●: Official supervision by independent institutes and /or test authorities
○: Own in-factory quality monitoring

Armafix AF pipe supports combi pack



Pipe support and suitable clamp. Especially designed for use with AF/Armaflex.

Pipe max. Outside-Ø [mm]	AF-2 insulation thickness 11,0 mm - 14,5 mm			AF-4 (AF-3)* insulation thickness 15,5 mm - 22,5 mm		
	Max. permissible distance [m]	Code	Pieces/carton	Max. permissible distance [m]	Code	Pieces/carton
10	2,00	FX-2-10/12K	32	2,00	FX-4(3)-10/12K	26
12	2,00	FX-2-10/12K	32	2,00	FX-4(3)-10/12K	26
15	2,00	FX-2-15/18K	24	2,00	FX-4(3)-15/18K	24
18	2,25	FX-2-15/18K	24	2,25	FX-4(3)-15/18K	24
22	2,75	FX-2-22/25K	24	2,75	FX-4(3)-22/25K	12
25	2,75	FX-2-22/25K	24	2,75	FX-4(3)-22/25K	12
28	3,00	FX-2-28/30K	16	3,00	FX-4(3)-28/30K	12
30	3,00	FX-2-28/30K	16	3,00	FX-4(3)-28/30K	12
35	3,50	FX-2-35/38K	12	3,50	FX-4(3)-35/38K	12
38	3,50	FX-2-35/38K	12	3,50	FX-4(3)-35/38K	12
42	3,75	FX-2-42/45K	12	3,75	FX-4(3)-42/45K	12
45	3,75	FX-2-42/45K	12	3,75	FX-4(3)-42/45K	12
48	4,25	FX-2-48K	12	4,25	FX-4(3)-48K	12
54	4,25	FX-2-54/57K	12	4,25	FX-4(3)-54/57K	16
57	4,25	FX-2-54/57K	12	4,25	FX-4(3)-54/57K	16
60	4,75	FX-2-60/64K	10	4,75	FX-4(3)-60/64K	12
64	4,75	FX-2-60/64K	10	4,75	FX-4(3)-60/64K	12
70	4,75	FX-2-70K	16	4,75	FX-4(3)-70K	12
76	5,50	FX-2-76/80K	12	5,50	FX-4(3)-76/80K	18
80	5,50	FX-2-76/80K	12	5,50	FX-4(3)-76/80K	18
89	6,00	FX-2-89K	8	6,00	FX-4(3)-89K	14

Pipe max. Outside-Ø [mm]	AF-6 insulation thickness 32,0 mm - 45,0 mm					
	Max. permissible distance [m]	Code	Pieces/carton			
15	2,00	FX-6-15/18K	20	-	-	-
18	2,25	FX-6-15/18K	20	-	-	-
22	2,75	FX-6-22/25K	18	-	-	-
25	2,75	FX-6-22/25K	18	-	-	-
28	3,00	FX-6-28/30K	12	-	-	-
30	3,00	FX-6-28/30K	12	-	-	-
35	3,50	FX-6-35/38K	12	-	-	-
38	3,50	FX-6-35/38K	12	-	-	-
42	3,75	FX-6-42/45K	12	-	-	-
45	3,75	FX-6-42/45K	12	-	-	-
48	4,25	FX-6-48K	12	-	-	-
54	4,25	FX-6-54/57K	8	-	-	-
57	4,25	FX-6-54/57K	8	-	-	-
60	4,75	FX-6-60/64K	10	-	-	-
64	4,75	FX-6-60/64K	10	-	-	-
70	4,75	FX-6-70K	9	-	-	-
76	5,50	FX-6-76/80K	6	-	-	-
80	5,50	FX-6-76/80K	6	-	-	-
89	6,00	FX-6-89K	4	-	-	-

Remark

Pipe supports for plastic and stainless steel pipes available on request.

Technical properties

*suitable for application with tubes of insulation thickness AF-3 and AF-4

Regulations

(1) according to DIN 1988

Armafix AF pipe supports



Pipe max. Outside-Ø [mm]	Armaflex tube nom. Ø [mm]	Max. permissible distance [m]	AF-2 insulation thickness 9,5 mm - 16,0 mm				Clamps AF-2	
			Code	Outer- Ø [mm]	Length [mm]	Pieces/carton	Code	Pieces/carton
10	10	2,00	FX-2-10/12	34	45	32	PCX 025/030	25
12	10	2,00	FX-2-10/12	36	45	32	PCX 025/030	25
15	15	2,00	FX-2-15/18	40	45	32	PCX 033/037	25
18	15	2,00	FX-2-15/18	43	45	32	PCX 033/037	25
22	22	2,75	FX-2-22/25	47	45	32	PCX 042/046	25
25	22	2,75	FX-2-22/25	50	45	32	PCX 042/046	25
28	28	3,00	FX-2-28/30	53	45	32	PCX 047/052	25
30	28	3,00	FX-2-28/30	56	45	32	PCX 047/052	25
35	35	3,50	FX-2-35/38	61	50	28	PCX 054/058	25
38	35	3,50	FX-2-35/38	65	50	28	PCX 054/058	25
42	42	3,75	FX-2-42/45	69	50	28	PCX 063/068	25
45	42	3,75	FX-2-42/45	72	50	28	PCX 063/068	25
48	48	4,25	FX-2-48	76	55	28	PCX 068/073	10
54	54	4,25	FX-2-54/57	82	55	28	PCX 072/080	10
57	54	4,25	FX-2-54/57	85	55	28	PCX 072/080	10
60	60	4,75	FX-2-60/64	89	65	24	PCX 082/085	10
64	60	4,75	FX-2-60/64	92	65	24	PCX 082/085	10
70	70	4,75	FX-2-70	98	65	24	PCX 092/099	10
76	76	5,50	FX-2-76/80	105	75	20	PCX 099/103	10
80	76	5,50	FX-2-76/80	109	75	20	PCX 099/103	10
89	89	6,00	FX-2-89	118	95	16	PCX 112/118	10
102	102	6,00	FX-2-102/108	134	95	16	PCX 133/137	10
108	102	6,00	FX-2-102/108	141	95	16	PCX 133/137	10
114	114	6,00	FX-2-110/114	144	115	12	PCX 137/142	10
125	125	6,00	FX-2-125	158	115	12	PCX 145/152	10
133	133	6,00	FX-2-133/140	165	115	12	PCX 159/164	10
140	133	6,00	FX-2-133/140	172	115	12	PCX 159/164	10
160	160	6,00	FX-2-160	193	115	9	PCX 190	10
165		6,00	FX-2-165/168 ¹	198	125	9	PCX 199	10
168		6,00	FX-2-165/168 ¹	201	125	9	PCX 199	10

Armafix AF pipe supports



Pipe max. Outside-Ø [mm]	Armaflex tube nom. Ø [mm]	Max. permissible distance [m]	AF-4 (AF-3)* insulation thickness 15,5 mm - 25,0 mm				Clamps AF-4 (AF-3)*	
			Code	Outer- Ø [mm]	Length [mm]	Pieces/carton	Code	Pieces/carton
10	10	2,00	FX-4(3)-10/12	46	55	28	PCX 042/046	25
12	10	2,00	FX-4(3)-10/12	48	55	28	PCX 042/046	25
15	15	2,00	FX-4(3)-15/18	52	55	28	PCX 042/046	25
18	15	2,00	FX-4(3)-15/18	55	55	28	PCX 042/046	25
22	22	2,75	FX-4(3)-22/25	60	55	28	PCX 054/058	25
25	22	2,75	FX-4(3)-22/25	64	55	28	PCX 054/058	25
28	28	3,00	FX-4(3)-28/30	66	55	28	PCX 063/068	25
30	28	3,00	FX-4(3)-28/30	70	55	28	PCX 063/068	25
35	35	3,50	FX-4(3)-35/38	74	65	24	PCX 068/073	10
38	35	3,50	FX-4(3)-35/38	79	65	24	PCX 068/073	10
42	42	3,75	FX-4(3)-42/45	85	65	24	PCX 072/080	10
45	42	3,75	FX-4(3)-42/45	88	65	24	PCX 072/080	10
48	48	4,25	FX-4(3)-48	91	65	24	PCX 082/085	10
54	54	4,25	FX-4(3)-54/57	98	65	24	PCX 088/092	10
57	54	4,25	FX-4(3)-54/57	101	65	24	PCX 088/092	10
60	60	4,75	FX-4(3)-60/64	105	75	20	PCX 099/103	10
64	60	4,75	FX-4(3)-60/64	109	75	20	PCX 099/103	10
70	70	4,75	FX-4(3)-70	116	75	20	PCX 108/112	10
76	76	5,50	FX-4(3)-76/80	122	85	16	PCX 112/118	10
80	76	5,50	FX-4(3)-76/80	127	85	16	PCX 112/118	10
89	89	6,00	FX-4(3)-89	136	100	12	PCX 133/137	10
102	102	6,00	FX-4(3)-102/108	149	100	12	PCX 137/142	10
108	102	6,00	FX-4(3)-102/108	156	100	12	PCX 137/142	10
114	114	6,00	FX-4(3)-110/114	162	115	12	PCX 145/152	10
125	125	6,00	FX-4(3)-125	173	115	12	PCX 168/173	10
133	133	6,00	FX-4(3)-133/140	183	115	12	PCX 190	10
140	133	6,00	FX-4(3)-133/140	189	115	12	PCX 190	10
160	160	6,00	FX-4(3)-160	210	115	6	PCX 206	10
165		6,00	FX-4(3)-165/168 ¹	216	125	6	PCX 222	10
168		6,00	FX-4(3)-165/168 ¹	219	125	6	PCX 222	10
204		6,00	FX-4(3)-204 ¹	255	170	4	-	-
216		6,00	FX-4(3)-216/219 ¹	267	170	4	-	-
219		6,00	FX-4(3)-216/219 ¹	270	170	4	-	-
254		6,00	FX-4(3)-254 ^{●1}	305	170	3	-	-
267		6,00	FX-4(3)-267/273 ^{●1}	318	170	3	-	-
273		6,00	FX-4(3)-267/273 ^{●1}	324	170	3	-	-
306		6,00	FX-4(3)-306 ^{●1}	357	215	1	-	-
324		4,50	FX-4(3)-324 ^{●1}	375	215	1	-	-
356		4,20	FX-4(3)-356 ^{●1}	407	215	6	-	-
406		4,20	FX-4(3)-406 ¹	457	215	6	-	-
475		3,70	FX-4(3)-457 ^{●1}	508	215	4	-	-
508		3,40	FX-4(3)-508 ^{●1}	559	215	4	-	-
610		2,90	FX-4(3)-610 ^{●1}	661	215	2	-	-

Armafix AF pipe supports



Pipe max. Outside-Ø [mm]	Armaflex tube nom. Ø [mm]	Max. permissible distance [m]	AF-6 insulation thickness 32,0 mm - 45,0 mm				Clamps AF-6	
			Code	Outer- Ø [mm]	Length [mm]	Pieces/carton	Code	Pieces/carton
15	15	2,00	FX-6-15/18 ¹	74	75	20	PCX 068/073	10
18	15	2,00	FX-6-15/18 ¹	77	75	20	PCX 068/073	10
22	22	2,75	FX-6-22/25	80	75	20	PCX 072/080	10
25	22	2,75	FX-6-22/25	84	75	20	PCX 072/080	10
28	28	3,00	FX-6-28/30	91	75	20	PCX 082/085	10
30	28	3,00	FX-6-28/30	95	75	20	PCX 082/085	10
35	35	3,50	FX-6-35/38	104	85	16	PCX 099/103	10
38	35	3,50	FX-6-35/38	109	85	16	PCX 099/103	10
42	42	3,75	FX-6-42/45	113	85	16	PCX 099/103	10
45	42	3,75	FX-6-42/45	116	85	16	PCX 099/103	10
48	48	4,25	FX-6-48	119	85	16	PCX 112/118	10
54	54	4,25	FX-6-54/57	126	85	16	PCX 112/118	10
57	54	4,25	FX-6-54/57	129	85	16	PCX 112/118	10
60	60	4,75	FX-6-60/64	134	100	12	PCX 133/137	10
64	60	4,75	FX-6-60/64	137	100	12	PCX 133/137	10
70	70	4,75	FX-6-70	144	100	12	PCX 137/142	10
76	76	5,50	FX-6-76/80	152	115	12	PCX 137/142	10
80	76	5,50	FX-6-76/80	156	115	12	PCX 137/142	10
89	89	6,00	FX-6-89	167	125	12	PCX 159/164	10
102	102	6,00	FX-6-102/108	179	125	12	PCX 190	10
108	102	6,00	FX-6-102/108	188	125	12	PCX 190	10
114	114	6,00	FX-6-110/114	196	145	12	PCX 199	10
125	125	6,00	FX-6-125	207	145	12	PCX 206	10
133	133	6,00	FX-6-133/140	219	145	8	PCX 231	10
140	133	6,00	FX-6-133/140	225	145	8	PCX 231	10
160	160	6,00	FX-6-160	248	145	6	PCX 249	10
165		6,00	FX-6-165/168 ¹	254	165	5	PCX 259	10
168		6,00	FX-6-165/168 ¹	257	165	5	PCX 259	10
204		6,00	FX-6-204 ¹	305	215	3	-	-
216		6,00	FX-6-216/219 ^{•1}	317	215	1	-	-
219		6,00	FX-6-216/219 ^{•1}	320	215	1	-	-
254		6,00	FX-6-254 ^{•1}	355	215	1	-	-
267		6,00	FX-6-267/273 ^{•1}	368	215	1	-	-
273		6,00	FX-6-267/273 ^{•1}	374	215	1	-	-
306		6,00	FX-6-306 ^{•1}	407	215	6	-	-
324		4,50	FX-6-324 ^{•1}	425	215	6	-	-
356		4,20	FX-6-356 ^{•1}	457	215	6	-	-
406		4,20	FX-6-406 ^{•1}	507	215	2	-	-
457		3,70	FX-6-457 ^{•1}	558	215	2	-	-
508		3,40	FX-6-508 ^{•1}	609	215	2	-	-
610		2,90	FX-6-610 ^{•1}	711	215	2	-	-

Remark

Pipe supports for plastic and stainless steel pipes available on request.
outer Ø = installation Ø

Technical properties

Pipe supports AF-4 (AF-3) are suitable for applications with tubes of insulation thickness AF-3 and AF-4

Regulations

max. permissible distance m according to DIN 1988

- Item not on stock. Delivery on request.

¹ Sheets

Armafix AF duct supports



Code	Insulation thickness [mm]	Width [mm]	Length [m]	Pieces/carton
AS-19MM •	19,0	100,0	2	5
AS-25MM •	25,0	100,0	2	4
AS-32 MM •	32,0	100,0	2	3
AS-50 MM •	50,0	100,0	2	2

- Item not on stock. Delivery on request.



Clamps	
Code	Pieces/carton
PCX 025/030	25
PCX 033/037	25
PCX 038/041	25
PCX 042/046	25
PCX 047/052	25
PCX 054/058	25
PCX 059/063	25
PCX 063/068	25
PCX 068/073	10
PCX 072/080	10
PCX 082/085	10
PCX 088/092	10
PCX 092/099	10
PCX 099/103	10
PCX 108/112	10
PCX 112/118	10
PCX 125/130	10
PCX 133/137	10
PCX 137/142	10
PCX 145/152	10
PCX 159/164	10
PCX 164/169	10
PCX 168/173	10
PCX 190	10
PCX 199	10
PCX 206	10
PCX 222	10
PCX 231	10
PCX 249	10
PCX 259	10