



kaiflex[®] EF

Designed for reliable performance

Flexible insulation with closed cell structure to save energy and stop condensation.

- Closed cell structure with in-built water vapour barrier
- Inherently resistant to corrosion
- Excellent thermal values minimise energy loss
- Flexible, dust and fibre free nature
- Inherent resistance to microbial growth





Kaiflex EF is flexible & closed cell Kaiflex insulation re-envisioned to meet the specific requirements of fast growing commercial developments where HVAC systems are essential but where minimising energy use is a priority.

Achieving a European B-s3 fire classification, Kaiflex EF is dust and fibre free and can be used in any kind of public, commercial or industrial building without impacting on health or the quality of indoor air.

Utilising established and proven technology, Kaiflex EF is designed to be durable and reliable insulation manufactured to the highest levels of quality and supplied in tubes and sheets for use on air-conditioning, refrigeration, chilled water, heating and hot water pipes and air-distribution ductwork.



Closed cell structure with in-built water vapour barrier
Formed from thousands of independently water resistant cells, Kaiflex insulation is naturally resistant to moisture ingress and requires no additional water vapour barrier.



Inherently resistant to corrosion
With an inherent resistance to moisture ingress Kaiflex insulation keeps pipes dry and helps to prevent corrosion under insulation.



Excellent thermal values minimise energy loss
Kaiflex features a low thermal conductivity that prevents the loss of energy from pipework making Kaiflex an excellent insulating material.



Flexible, dust and fibre free nature
Dust & fibres can aggravate respiratory conditions and create an additional site hazard. Kaiflex is dust and fibre free making installation easier and healthier.



Inherent resistance to microbial growth
By effectively preventing moisture ingress, Kaiflex is inherently resistant to the microbial and mould growth that otherwise compromise indoor air quality.

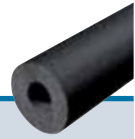
Kaiflex EF Technical Data

Material		Elastomeric foam based on synthetic rubber. Flexible Elastomeric Foam (FEF) in acc. to EN 14304	
Cell structure		Closed cell	
Colour		Black	
Upper temperature limit	Pipe Flat surfaces	+110 °C +85 °C	
Lower temperature limit		-50 °C (-200 °C)	See remark (1)
Thermal conductivity	λ_0 at -10 °C at 0 °C at +10 °C	$0,036 + 7,2 \cdot 10^{-5} \vartheta + 1,2 \cdot 10^{-6} \vartheta^2$ $\leq 0,035 \text{ W/(m-K)}$ $\leq 0,036 \text{ W/(m-K)}$ $\leq 0,037 \text{ W/(m-K)}$	Test acc. to DIN EN ISO 8497 DIN EN 12667
Water vapour permeability	Moisture resistance factor μ	≥ 8.000 No separate vapour barrier required	Test acc. to DIN EN 13469 DIN EN 12086
Euroclass [°]	Tubes 6 mm to 50 mm Sheets 3 mm to 50 mm	B _L -s3, d0 B-s3, d0	Test acc. to DIN EN 13501-1
Practical fire behaviour		Self-extinguishing, no drips, does not support flame spread	
Corrosion resistance		Satisfies requirements	In acc. to DIN 1988
Insulation material index number acc. to AGI	Tubes Sheets	36.12.03.05.04 36.07.03.05.04	
Health aspects		Dust & fibre free Heavy metal (e.g. cadmium, lead) and formaldehyde free	
Other certificates / approvals	pH-Value	CE marked Neutral	
Shelf life	Self-adhesive products	1 year	Store in a dry room at a typical relative humidity (between 50 % and 70 %) and room temperature (between 0 °C and +35 °C)
Tolerances		In acc. with DIN EN 14304:2013-04	
Outdoor applications		Needs protection against UV-radiation	See remark (2)

Remark (1) For temperatures below -50 °C please contact our Technical Support Team for advice.

Remark (2) To protect against UV-induced deterioration Kaiflex should be either painted using Kaifinish Color paint or covered with a suitable UV resistant cladding system within 3 days of being installed outdoors.

[°] The Euroclass rating applies to metallic or solid mineral substrates.

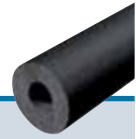


Kaiflex EF Tube

Colour: Black - Length: 2 m

Copper pipe Cu		Iron & steel pipe Fe			6 mm Insulation thickness			9 mm Insulation thickness		
OD mm	Nom width DN	Inch	OD mm	Nom width DN	Reference	Order No.	m/ carton	Reference	Order No.	m/ carton
6,0	4				EF-06x006	4000880	600	EF-09x006	4000892	360
8,0	6				EF-06x008	4000881	500	EF-09x008	4000893	340
10,0	8	1/8	10,2	6	EF-06x010	4000882	430	EF-09x010	4000894	320
12,0	10		12,5		EF-06x012	4000883	350	EF-09x012	4000895	280
15,0	10	1/4	13,5	8	EF-06x015	4000884	300	EF-09x015	4000896	240
18,0	15	3/8	17,2	10	EF-06x018	4000885	280	EF-09x018	4000897	190
22,0	20	1/2	21,3	15	EF-06x022	4000887	216	EF-09x022	4000899	156
28,0	25	3/4	26,9	20	EF-06x028	4000889	150	EF-09x028	4000901	124
35,0	32	1	33,7	25	EF-06x035	4000891	120	EF-09x035	4000904	92
42,0	40	1 1/4	42,4	32				EF-09x042	4000906	70
			44,5					EF-09x045	4000907	60
		1 1/2	48,3	40				EF-09x048	4000908	60
54,0	50		54,0					EF-09x054	4000909	60
57,0	50		57,0					EF-09x057	4000910	60
		2	60,3	50				EF-09x060	4000911	60
64,0			63,5					EF-09x064	4000912	54
67,0										
70,0			70,0					EF-09x070	4000913	54
76,1	65	2 1/2	76,1	65				EF-09x076	4000914	54
80,0								EF-09x080	4000915	40
88,9	80	3	88,9	80				EF-09x089	4000916	36
108,0	100		108,0					EF-09x108	4000918 *	28
114,0	100	4	114,3	100				EF-09x114	4000919	28
			125,0					EF-09x125	4000920 *	20
133,0	125		133,0					EF-09x133	4000921 *	16
		5	139,7	125				EF-09x140	4000922	16
159,0	150		160,0					EF-09x160	4000923	14

* No stock item, delivery time on request.



Kaiflex EF Tube

Colour: Black - Length: 2 m

Copper pipe Cu		Iron & steel pipe Fe			13 mm Insulation thickness			19 mm Insulation thickness		
OD mm	Nom width DN	Inch	OD mm	Nom width DN	Reference	Order No.	m/ carton	Reference	Order No.	m/ carton
6,0	4				EF-13x006	4000924	240	EF-19x006	4000958	126
8,0	6				EF-13x008	4000925	210			
10,0	8	1/8	10,2	6	EF-13x010	4000926	190	EF-19x010	4000959	106
12,0	10		12,5		EF-13x012	4000927	172	EF-19x012	4000960	100
15,0	10	1/4	13,5	8	EF-13x015	4000928	154	EF-19x015	4000961	86
18,0	15	3/8	17,2	10	EF-13x018	4000929	130	EF-19x018	4000962	78
22,0	20	1/2	21,3	15	EF-13x022	4000931	110	EF-19x022	4000964	74
28,0	25	3/4	26,9	20	EF-13x028	4000933	86	EF-19x028	4000966	58
35,0	32	1	33,7	25	EF-13x035	4000936	76	EF-19x035	4000969	48
42,0	40	1 1/4	42,4	32	EF-13x042	4000938	56	EF-19x042	4000970	40
			44,5		EF-13x045	4000939	52	EF-19x045	4000971	34
		1 1/2	48,3	40	EF-13x048	4000940	48	EF-19x048	4000972	30
54,0	50		54,0		EF-13x054	4000941	46	EF-19x054	4000973	30
57,0	50		57,0		EF-13x057	4000942	44	EF-19x057	4000974	28
		2	60,3	50	EF-13x060	4000943	40	EF-19x060	4000975	28
64,0			63,5		EF-13x064	4000944	40	EF-19x064	4000976	28
67,0					EF-13x067	4000945	40	EF-19x067	4000977	28
70,0			70,0		EF-13x070	4000946	40	EF-19x070	4000978	28
76,1	65	2 1/2	76,1	65	EF-13x076	4000947	34	EF-19x076	4000979	28
80,0					EF-13x080	4000948	30	EF-19x080	4000980	26
88,9	80	3	88,9	80	EF-13x089	4000949	30	EF-19x089	4000981	22
108,0	100		108,0		EF-13x108	4000951 *	28	EF-19x108	4000983 *	20
114,0	100	4	114,3	100	EF-13x114	4000952	28	EF-19x114	4000984	18
			125,0		EF-13x125	4000953 *	20	EF-19x125	4000985 *	18
133,0	125		133,0		EF-13x133	4000954 *	18	EF-19x133	4000986 *	12
		5	139,7	125	EF-13x140	4000955	18	EF-19x140	4000987	10
159,0	150		160,0		EF-13x160	4000956	16	EF-19x160	4000988	8

* No stock item, delivery time on request.



Kaiflex EF Tube

Colour: Black - Length: 2 m

Copper pipe Cu		Iron & steel pipe Fe			25 mm Insulation thickness			32 mm Insulation thickness		
OD mm	Nom width DN	Inch	OD mm	Nom width DN	Reference	Order No.	m/ carton	Reference	Order No.	m/ carton
6,0	4									
8,0	6									
10,0	8	1/8	10,2	6	EF-25x010	4000990	72			
12,0	10		12,5		EF-25x012	4000991	60			
15,0	10	1/4	13,5	8	EF-25x015	4000992	60			
18,0	15	3/8	17,2	10	EF-25x018	4000993	50	EF-32x018	4001016	32
22,0	20	1/2	21,3	15	EF-25x022	4000995	42	EF-32x022	4001017	32
28,0	25	3/4	26,9	20	EF-25x028	4000997	40	EF-32x028	4001019	24
35,0	32	1	33,7	25	EF-25x035	4000999	32	EF-32x035	4001020	24
42,0	40	1 1/4	42,4	32	EF-25x042	4001000	24	EF-32x042	4001021	22
			44,5							
		1 1/2	48,3	40	EF-25x048	4001001	24	EF-32x048	4001022	18
54,0	50		54,0		EF-25x054	4001002	22	EF-32x054	4001023	18
57,0	50		57,0					EF-32x057	4001024	16
		2	60,3	50	EF-25x060	4001003	22	EF-32x060	4001025	16
64,0			63,5		EF-25x064	4001004	18	EF-32x064	4001026	16
67,0										
70,0			70,0		EF-25x070	4001005	18	EF-32x070	4001028	14
76,1	65	2 1/2	76,1	65	EF-25x076	4001006	18	EF-32x076	4001029	12
80,0								EF-32x080	4001030	12
88,9	80	3	88,9	80	EF-25x089	4001008	14	EF-32x089	4001031	10
108,0	100		108,0		EF-25x108	4001009 *	10	EF-32x108	4001033 *	8
114,0	100	4	114,3	100	EF-25x114	4001010	10	EF-32x114	4001034	8
			125,0							
133,0	125		133,0					EF-32x133	4001036 *	6
		5	139,7	125	EF-25x140	4001012	6	EF-32x140	4001037	6
159,0	150		160,0					EF-32x160	4001038	4

* No stock item, delivery time on request.

Kaiflex EF-SK Tube · self-adhesive



Colour: Black · Length: 2 m

Copper pipe Cu		Iron & steel pipe Fe			9 mm Insulation thickness			13 mm Insulation thickness		
OD mm	Nom width DN	Inch	OD mm	Nom width DN	Reference	Order No.	m/ carton	Reference	Order No.	m/ carton
15,0	10	1/4	13,5	8	EF-09x015-SK	4001078	240	EF-13x015-SK	4001089	154
18,0	15	3/8	17,2	10	EF-09x018-SK	4001079	190	EF-13x018-SK	4001090	130
22,0	20	1/2	21,3	15	EF-09x022-SK	4001080	156	EF-13x022-SK	4001091	110
28,0	25	3/4	26,9	20	EF-09x028-SK	4001081	124	EF-13x028-SK	4001092	86
35,0	32	1	33,7	25	EF-09x035-SK	4001082	92	EF-13x035-SK	4001093	76
42,0	40	1 1/4	42,4	32	EF-09x042-SK	4001083	70	EF-13x042-SK	4001094	56
		1 1/2	48,3	40	EF-09x048-SK	4001084	60	EF-13x048-SK	4001095	48
54,0	50		54,0		EF-09x054-SK	4001085	60	EF-13x054-SK	4001096	46
		2	60,3	50	EF-09x060-SK	4001086	60	EF-13x060-SK	4001097	40
76,1	65	2 1/2	76,1	65	EF-09x076-SK	4001087	54	EF-13x076-SK	4001098	34
88,9	80	3	88,9	80	EF-09x089-SK	4001088	36	EF-13x089-SK	4001099	30

Copper pipe Cu		Iron & steel pipe Fe			19 mm Insulation thickness					
OD mm	Nom width DN	Inch	OD mm	Nom width DN	Reference	Order No.	m/ carton			
15,0	10	1/4	13,5	8	EF-19x015-SK	4001100	86			
18,0	15	3/8	17,2	10	EF-19x018-SK	4001101	78			
22,0	20	1/2	21,3	15	EF-19x022-SK	4001102	74			
28,0	25	3/4	26,9	20	EF-19x028-SK	4001103	58			
35,0	32	1	33,7	25	EF-19x035-SK	4001104	48			
42,0	40	1 1/4	42,4	32	EF-19x042-SK	4001105	40			
		1 1/2	48,3	40	EF-19x048-SK	4001106	30			
54,0	50		54,0		EF-19x054-SK	4001107	30			
		2	60,3	50	EF-19x060-SK	4001108	28			
76,1	65	2 1/2	76,1	65	EF-19x076-SK	4001109	28			
88,9	80	3	88,9	80	EF-19x089-SK	4001110	22			

Kaiflex EF Sheet · continuous



Colour: Black

Insulation thickness mm	Sheet · continuous 1 m width			Sheet · continuous · self-adhesive 1 m width		
	Reference	Order No.	m ² / bag	Reference	Order No.	m ² / bag
6	EF-06-RL	4001163	30	EF-06-RL-SK	4006564	30
10	EF-10-RL	4001164	20	EF-10-RL-SK	4001170	20
13	EF-13-RL	4001165	14	EF-13-RL-SK	4001171	14
16	EF-16-RL	4001166	12	EF-16-RL-SK	4001172	12
19	EF-19-RL	4001167	10	EF-19-RL-SK	4001173	10
25	EF-25-RL	4001168	8	EF-25-RL-SK	4001174	8
32	EF-32-RL	4001169	6	EF-32-RL-SK	4001175	6