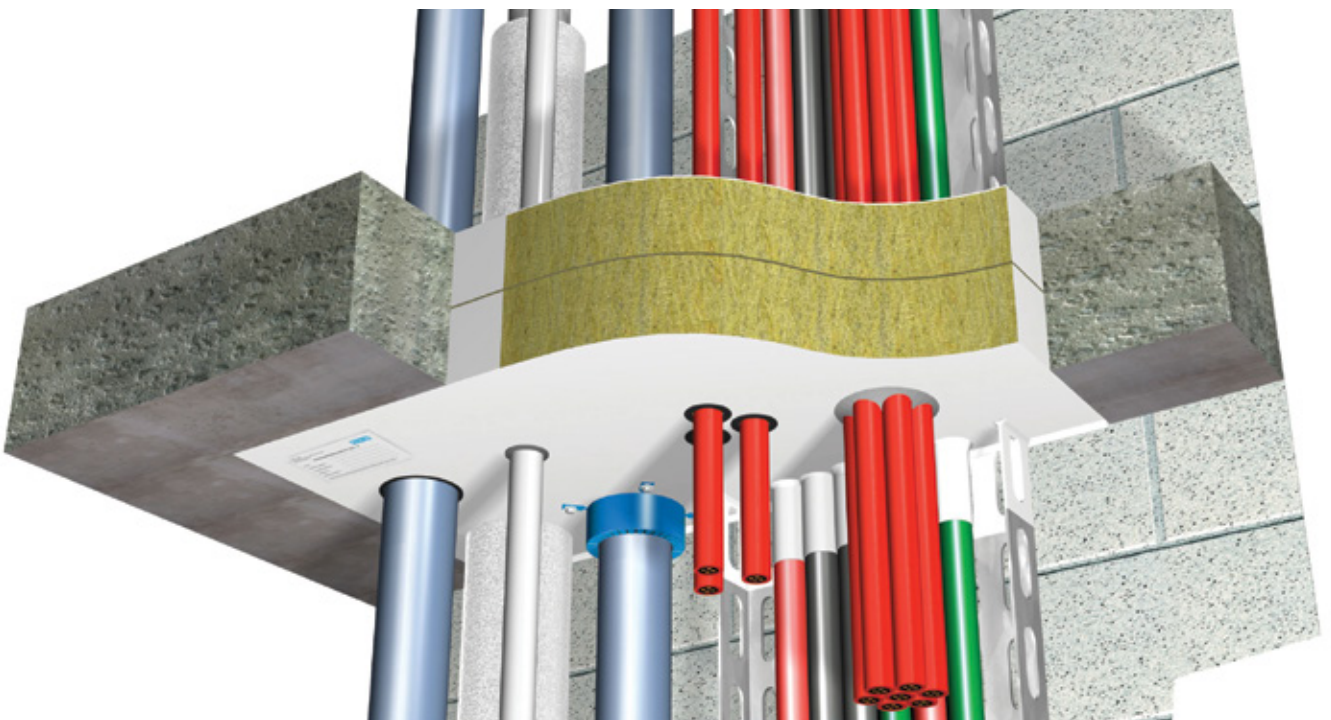


# Promat

## PROMASTOP®-E Fire stopping coating



[www.promat-see.com](http://www.promat-see.com)





### General description

PROMASTOP®-E is a water based endothermic coating. Good workability allows fast and clean installation of coated batts within openings.

### Fields of application

PROMASTOP®-E is a fire stopping coating for services in walls and floors. It is designed for use with cables, combustible and non-combustible pipes and joints without movement to seal against the spread of smoke and fire.

### System advantages / customer benefit

- Non-expanding fire stopping coating
- The coating retains a certain flexibility once dried

### Test certificate / approval

- EN 1366-3
- EN 13501-1/2
- ETAG 026-2
- EN ISO 10140-2
- EN ISO 717-1

### Packaging

- 12,5 kg plastic buckets
  - 44 buckets/pallet
  - 550 kg/pallet
- Subject to change.

### Storage requirements

- Store in cool and dry conditions: 3 °C - 35 °C
- Shelf life of original sealed containers at least 6 months
- Once opened, containers should be finished swiftly

### Safety instructions

- Please refer to the safety data sheet for additional advice

### Technical Data and Properties

	liquid	paste
Colour	white	white
Consistency	liquid	paste
Density	1,5 ± 0,2 g/cm <sup>3</sup>	1,5 ± 0,2 g/cm <sup>3</sup>
Viscosity	60 - 100 Pa·s	320 - 440 Pa·s
Use category	Class X	Class X
Reaction to fire	C-s2, d0	C-s2, d0
VOC content	0 g/l	0 g/l

## **Bulgaria**

### **Etex Building Performance S.A.**

Str. Vulturilor Nr. 98, 5th Floor  
030857 Bucharest, Romania  
M +359 878 81 51 05  
E [info.bg@promat-see.com](mailto:info.bg@promat-see.com)  
[www.promat-see.com](http://www.promat-see.com)

## **Croatia, Bosnia and Herzegovina**

### **Etex Building Performance**

#### **Promat d.o.o., Podružnica Zagreb**

Kovinska 4a  
10090 Zagreb  
T +385 1 349 63 24  
F +385 1 379 41 54  
E [info.hr@promat-see.com](mailto:info.hr@promat-see.com)  
[www.promat-see.com](http://www.promat-see.com)

## **Greece**

### **Etex Building Performance S.A.**

Str. Vulturilor Nr. 98, 5th Floor  
030857 Bucharest, Romania  
T +40 31 224 01 00  
F +40 31 224 01 01  
E [info@promat-see.com](mailto:info@promat-see.com)  
[www.promat-see.com](http://www.promat-see.com)

## **Hungary**

### **Etex Building Performance**

M +36 30 343 2572  
M +36 30 455 1273  
M: +36 30 541 8316  
E [info.hu@promat-see.com](mailto:info.hu@promat-see.com)  
[www.promat-see.com](http://www.promat-see.com)

## **Kosovo, Albania**

### **Etex Building Performance Sh.A.**

Ulpiana, D-1, HY-4 Nr.2  
10000 Prishtina  
T +383 38 553 407  
M +381 64 61 39 763  
M +377 44 120 671  
E [info@promat-see.com](mailto:info@promat-see.com)  
[www.promat-see.com](http://www.promat-see.com)

## **Romania**

### **Etex Building Performance S.A.**

Str. Vulturilor Nr. 98, 5th Floor  
030857 Bucharest  
T +40 31 224 01 00  
F +40 31 224 01 01  
E [info.ro@promat-see.com](mailto:info.ro@promat-see.com)  
[www.promat-see.com](http://www.promat-see.com)

## **Serbia, Macedonia, Montenegro**

### **Etex Building Performance d.o.o.**

Vojvode Putnika 79  
21208 Sremska Kamenica  
T +381 21 210 10 90  
M +381 63 625 426  
M +381 63 510 720  
E [info.rs@promat-see.com](mailto:info.rs@promat-see.com)  
[www.promat-see.com](http://www.promat-see.com)

## **Slovakia**

### **Etex Building Performance**

#### **EBM Co. s.r.o.**

Štúrova 155  
949 01 Nitra  
M +421 915 936 126  
E [info.sk@promat-see.com](mailto:info.sk@promat-see.com)  
[www.promat-see.com](http://www.promat-see.com)

## **Slovenia**

### **Etex Building Performance**

#### **Promat d.o.o.**

Kidričeva 56b  
4220 Škofja Loka  
T +386 4 51 51 451  
F +385 4 51 51 450  
E [info.si@promat-see.com](mailto:info.si@promat-see.com)  
[www.promat-see.com](http://www.promat-see.com)