

Arma-Chek®
Silver

THE BRILLIANT COVERING FOR
ARMAFLEX® INSULATION DESIGNED FOR
FAST INSTALLATION, DURABILITY AND
EASY CLEANING



- Saves installation time compared to metal jacketing
- System with matching tape, elbow and t-parts
- Easy to clean aesthetic surface in metallic look
- Light weight and flexible
- Strong and resistant surface
- Good chemical resistance
- Professional training provided by Armacell

CLADDING FOR SUPERIOR PERFORMANCE

Arma-Chek® Silver has a UV resistant metal finishing for aesthetic indoor and outdoor installations.

Saves installation time when compared with metal jacketing.

Watch the video at <http://youtu.be/x0nHyDRcEzo> and see the difference!



PRE-FORMED PARTS

Specially designed Arma-Chek® Silver elbows and t-pieces offer you additional installation time savings. The pre-formed parts match the Armaflex® tubes perfectly to complete the system.



UV-RESISTANCE

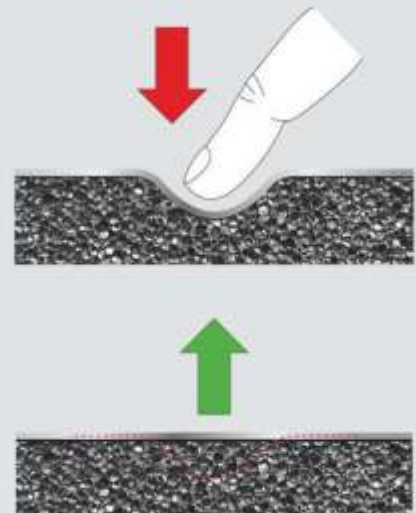
The UV-resistance of Arma-Chek® Silver is constantly tested with Weather-O-Meter equipment according to ISO 4892. The samples are exposed to simulated weather for at least 15000 hours, which equals to estimated 15 years of outdoor application.



SURFACE PRESSURE RESISTANCE

Unlike traditional metal cladding, Arma-Chek® Silver recovers it's original shape after pressure is exerted on the surface.

This property prevents lasting dents and ensures a durable installation.



Technical Data - Arma-Chek® Silver

Brief description	Arma-Chek® Silver is a covering system featuring a double layer laminate of aluminium, coated with a special UV protection and a PVC backing. As a covering for Armaflex® substrates, Arma-Chek® Silver jacketing is highly puncture and tear resistant as well as flame retardant. Arma-Chek® Silver can be used for insulation and protection of HVAC and Refrigeration systems inside or outside.
Material type	Covering: double layer laminate of aluminium, coated with a special UV protection and a PVC backing.
Colour	Silver (covering)
Product Range	Arma-Chek® Silver is available as single covering.
Applications	Protection of insulated pipes, ducts, valves and vessels for refrigeration and air conditioning systems, clean room environments, food industries etc.
Assembly	The Armaflex® and Arma-Chek® installation manuals should be consulted before assembly. We also offer special installation courses for the application of Arma-Chek®. Please consult our Technical Services.
Remarks	When calculating the insulation thickness required please use an external surface coefficient of 8 W/(m ² ·K). For outdoor use please note: Testing regarding UV resistance of these materials showed excellent results. When used on outdoor applications the materials showed very good durability even under UV exposition. However, due to the unpredictable nature of outdoor conditions there may be occasional weathering influences which cannot be tested in advance. Therefore, installation in extreme environments is not recommended. Please contact our Technical Services if in doubt.

Property	Value/Assessment		Special Remarks
Temperature Range			
Temperature Range ¹	Max. service temperature	+75 °C for the silver jacketing	Tested to EN 14706 EN 14304
	Min. service temperature ²	-25 °C	
Other technical features			
Weight	approx. 340 g/m³ (covering)		Tested to EN 22286
Material thickness	approx. 230 µm (covering)		Tested to EN 22286
Resistance to mechanical impact	Good puncture and tear resistance.		
UV resistance ³	Excellent		Tested to ASTM G 26A / ISO 4892-2 (Method A)

1. The surface may wrinkle slightly when there are fluctuations in temperature since elastomeric products expand and contract in these circumstances. However, these changes are superficial and do not impact the performance of the material. Wrinkles usually disappear once equipment returns to its original operating temperature.
2. For temperatures below -25 °C please contact our Technical Services to request the corresponding technical information.
3. Colour may fade when used in outdoor applications. This does not have any impact on the functionality of the covering or the insulation material.

All statements and technical information are based on results obtained under typical conditions. It is the responsibility of the recipient to verify with us that the information is appropriate for the specific use intended. Installation instructions are given in our Arma-Chek® installation manual. Please consult our Technical Department before insulating stainless steel. Armaflex® 520 adhesive must be used to ensure correct installation.

GAT No. 744-745, Village Lonikand, Pune Nagar Road • Pune 412216 •
Maharashtra • India
Phone +91 20 66782000
www.armacell.in • info.isa@armacell.com
CIN: U24293PN2005FTC131939