

VIBRAFON WMP
Acoustic wall fasteners

VIBRATION ISOLATION & SOUND INSULATION

VIBRAFON WMP – Acoustic wall fasteners

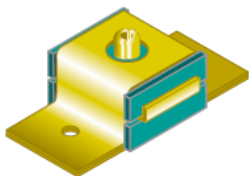
Product description VIBRAFON WMP acoustic wall fasteners are vibration-isolating fasteners that can be installed between a construction wall and a retention wall to restrict the transmission of vibrations and sounds. Certain types can also be used for acoustically disconnecting pipelines from the architectural construction. In collaboration with AMC, we developed these products based on SYLOMER vibration-isolating polyurethane foam.

- Characteristics**
- Very good vibration-isolating characteristics
 - Easy and fast to install
 - Economic solution
 - Various thicknesses available
 - Lifespan longer than 50 years
 - See the table for an indication of the vibration-isolating characteristics, but these characteristics must be calculated per project based on the loads and other data

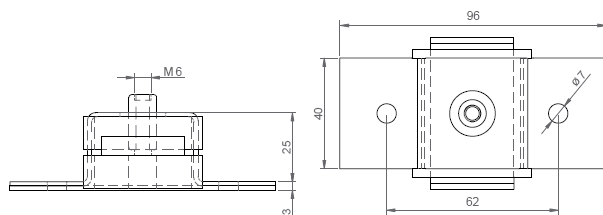
Application In many cases, the VIBRAFON WMP vibration-isolating fasteners will be installed between an existing (architectural) wall construction and a retention wall construction to significantly improve the sound insulation to the adjacent room or vice versa. Applications include poorly isolating/insulating walls in apartments, sound insulation in cinemas, pop stages, community centres, multicultural centres, cafés, restaurants and hotels. In addition, these fasteners are used to detach pipelines and air ducts from walls and/or ceilings.

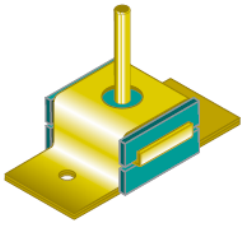
- Required information**
- The following information is needed for good advice:
- Required flexure frequency or sound insulation
 - Static, dynamic and maximum load per hanger
 - Drawings of the sections of the building in which the products will be used
 - Details of the construction in which the VIBRAFON WMP acoustic wall fasteners are built in
 - Available space and height for the product
 - Fire safety requirements

Dimensions See the following information.

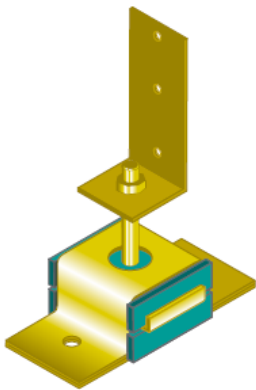
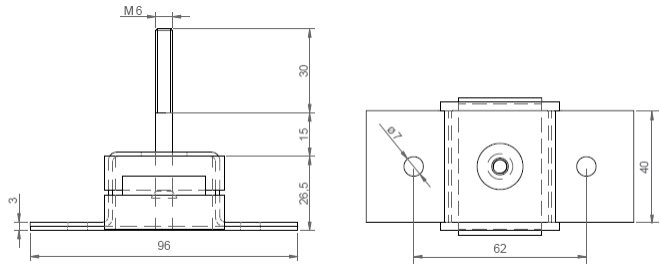


VibraFon WMP EP, type B
Direct wall mounting using two screws and female mounting on the other side

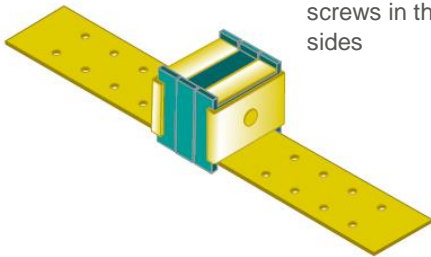
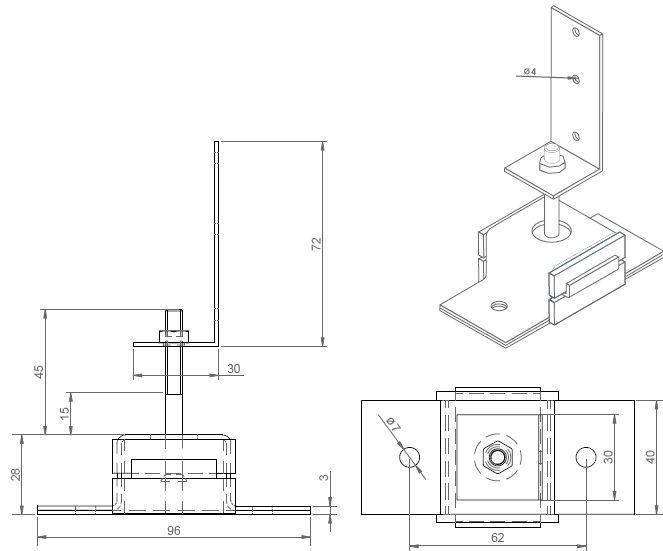




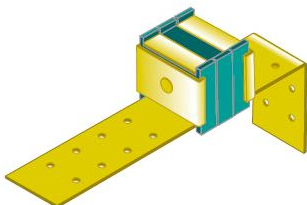
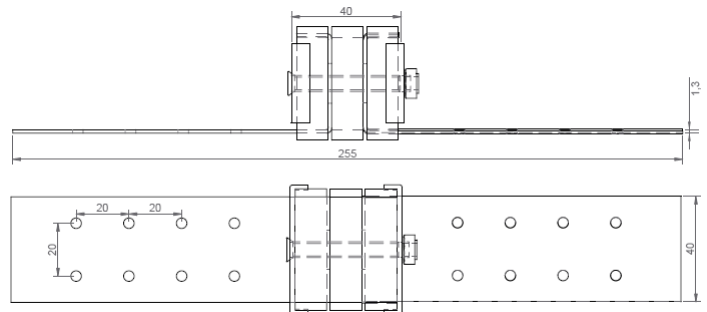
VibraFon WMP EP, Type B
 Direct wall mounting using two screws and male mounting on the other side



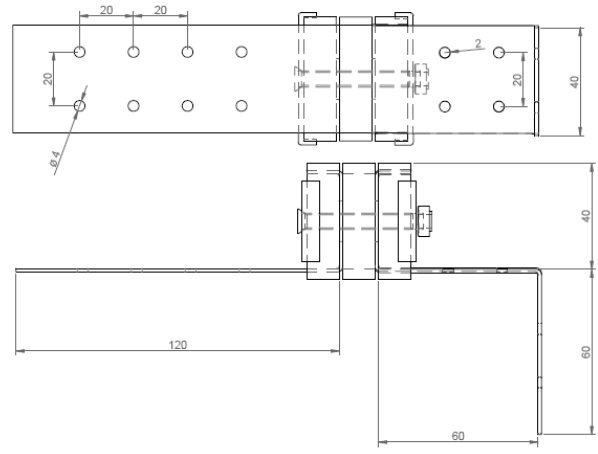
VibraFon WMP EP, Type L
 Direct wall mounting using two screws and on the other side an L-shaped bracket with a welded nut



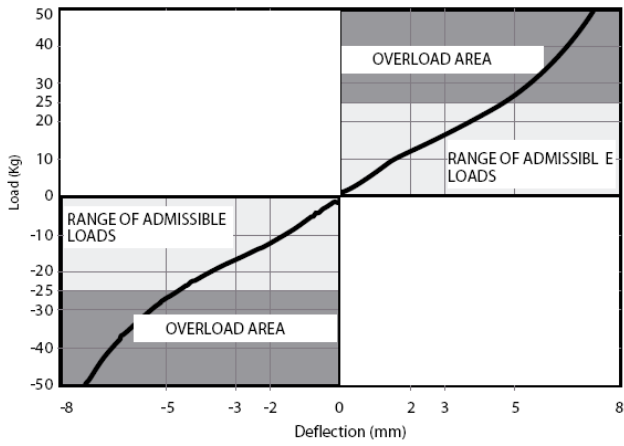
VibraFon WMP EP, Type ST
 Direct wall mounting using screws in the strips on both sides



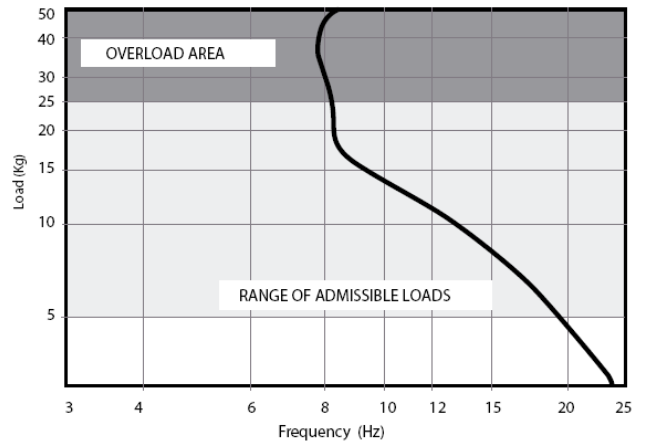
VibraFon WMP EP Type ST L
 Direct wall mounting using screws in the strips on both sides including an L-shaped strip on one side

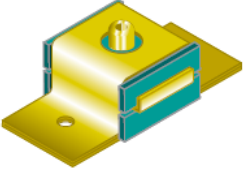
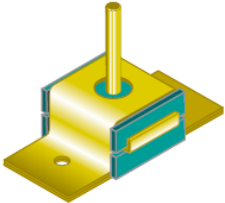
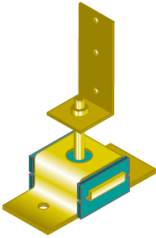
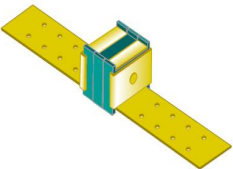


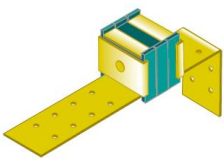
DEFLECTION DIAGRAM
Vibrafon WMP 25

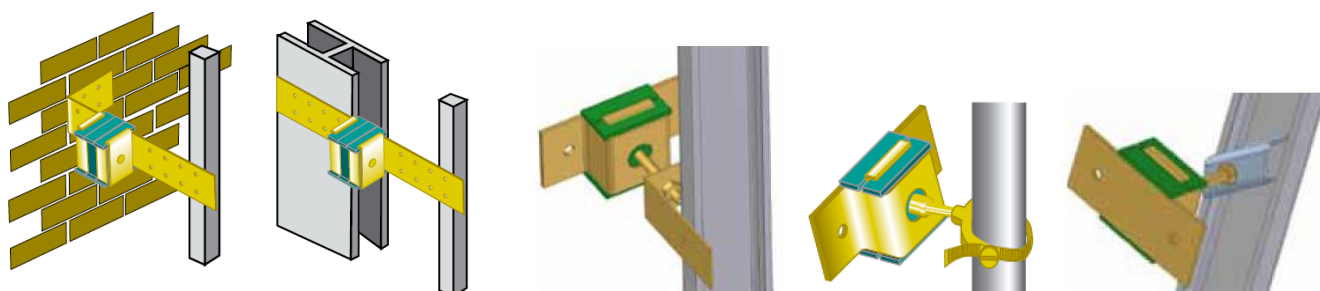


FLEXURE FREQUENCY
Vibrafon WMP 25



Model	Type	Maximum weight	Article number
	VIBRAFON WMP EP-25 Type B	25 kg	23701
	VIBRAFON WMP EP-25 Type A	25 kg	23703
	VIBRAFON WMP EP-25 Type L	25 kg	23705
	VIBRAFON WMP EP-25 Type ST	25 kg	23707

Model	Type	Maximum weight	Article number
	VIBRAFON WMP EP-25 Type ST L	25 kg	23709



 **ATIS**

ATIS International B.V.
 Noordhoek 33
 3351 LD Papendrecht
 Postbus 14
 3350 AA Papendrecht

T 31 (0)78 615 00 44
 F 31 (0)78 615 49 48
 info@atis-international.com
 www.atis-international.com

Disclaimer
 De omschreven toepassingen en aanbevelingen zijn zo correct mogelijk weergegeven maar zijn vrijblijvend en bieden geen garanties. Bij twijfel over toepassing/verwerking zelf een test uitvoeren of Atis raadplegen. Wij behouden ons het recht om zonder kennisgeving vooraf productgegevens te wijzigen.