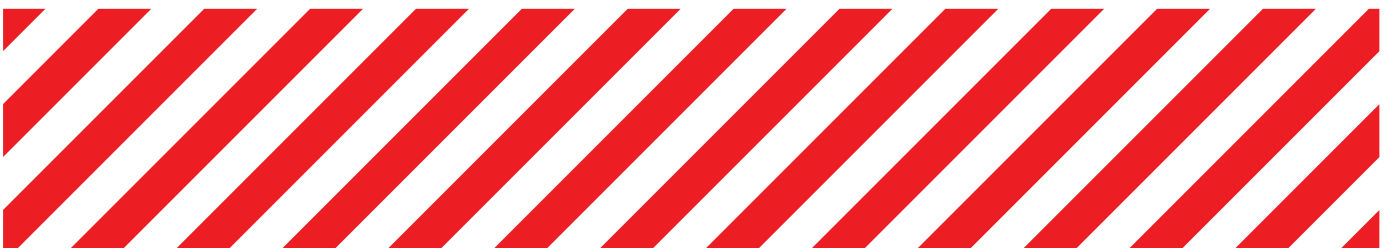
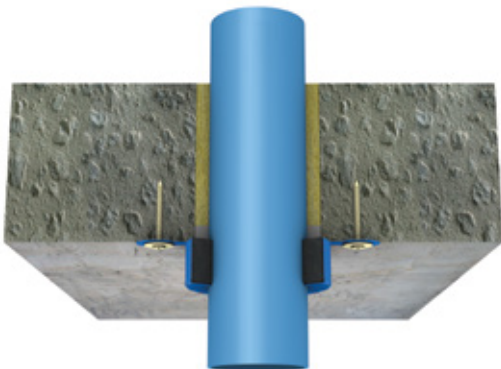
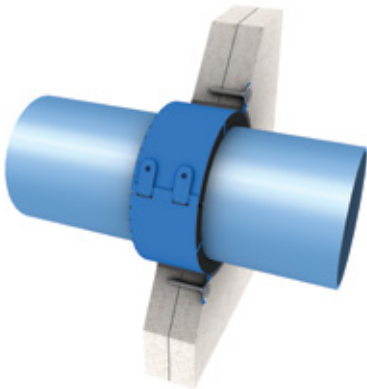
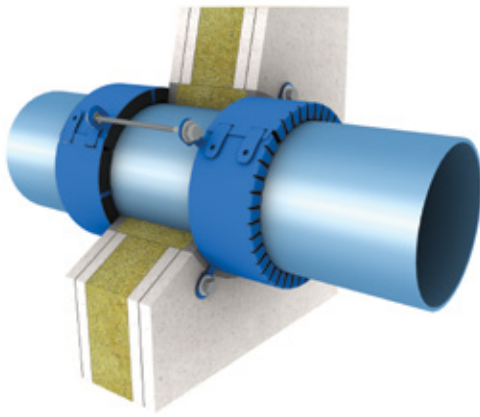
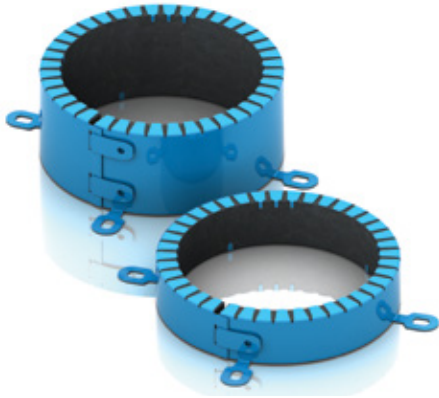


PROMASTOP®-FC Fire stopping collar Product handling guideline

Penetration seal



PROMASTOP®-FC Fire stopping collar



PROMASTOP®-FC is a pipe closure device made from powder-coated stainless steel, with an intumescent inlay. PROMASTOP®-FC protects against the spread of smoke, fire and heat.

General information

- PROMASTOP®-FC is suitable for surface-mounted and built-in conditions;
- Fire stopping collars are installed in pairs in both surfacemounted and built-in conditions in walls. A single collar only is required on the underside of floors or ceilings;
- The collars can be fixed to a rigid substrate (concrete, solid brick, stone, aerated concrete, masonry, block etc.) Drill a hole and use screws enclosed in packaging;
- Where collars are fixed to drywall constructions, the fixing must consist of minimum M6 threaded rods, which pass through the entire thickness of the partition construction; the collars are held into place by the use of nuts and washers onto each end of these threaded rods;
- PROMASTOP®-FC is suitable for pipe diameters of 32 to 315 mm;
- Suitable for pipes carrying non-flammable liquids and gases, and pipe mail line incl. control cables and pellet tubes;
- PROMASTOP®-FC6 is also suitable for couplings, and angled pipes;
- Use category is type X
 - Products intended for use in conditions exposed to weathering.

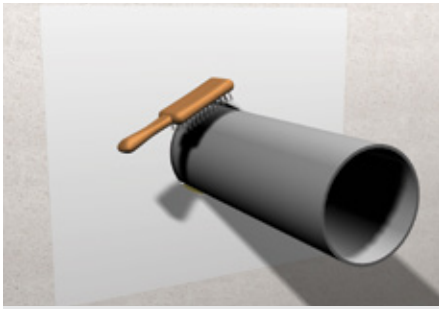
System installation details

Please refer to ETA, classification report or handbook for installation details on cables and pipes.

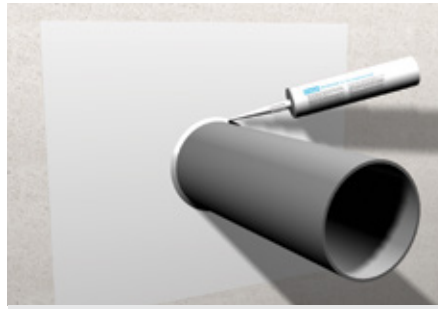
Safety information

Safety information sheet available on request.

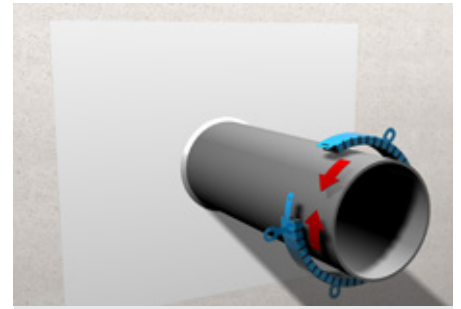
1. Installation guideline coated mineral wool penetration - surface mounted



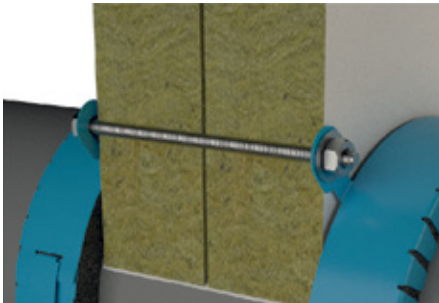
1. Clean around the opening and the penetration to ensure a smooth and dust free surface



2. If necessary install acoustic insulator and fill gap (maximum 15 mm) between pipe and wall with mineral wool (melting point > 1000 °C) and sealant



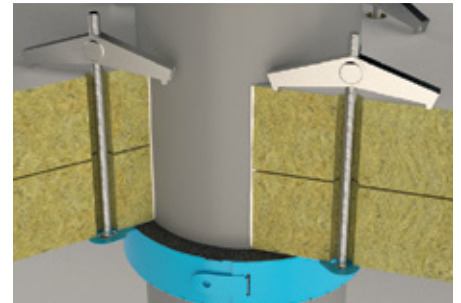
3. Place the fire stopping collar around the pipe; Snap shut and bend the collar flange(s) back through 180°



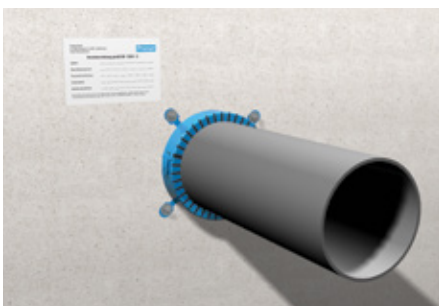
4a. Fixing method: Threaded rods. Fix the pipe collar to the wall or floor with M6 or M8 threaded rods; Mineral wool penetration - press threaded rods through the boards and use washers and nuts to fix collar on both sides; for floor application use washers and nuts also on the above side of the floor; Minimum 50 % of brackets have to be fixed with threaded rods (eg 4 brackets, 2 threaded rods; 5 brackets, 3 threaded rods; 2 brackets, 2 threaded rods)



4b. Fixing method: Spiral screws. Fix the pipe collar to the wall or floor with minimum 65 mm spiral screws



4c. Fixing method: Spring toggle bolts. Fix the pipe collar to the wall or floor with minimum 65 mm spiral screws

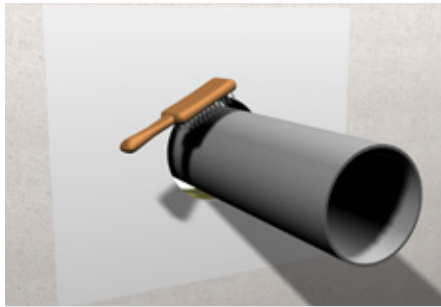


5. Finally fix the identification label in a suitable location

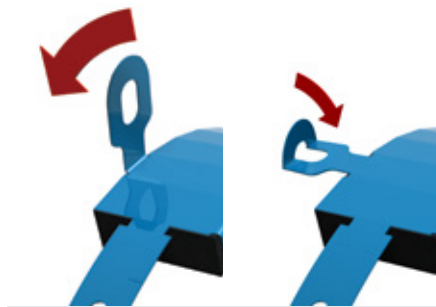
Note: For floor, insert an appropriate approved metal grid as foot traffic protection (below the mineral wool panels, where deemed necessary).

For more installation details refer to classification report.

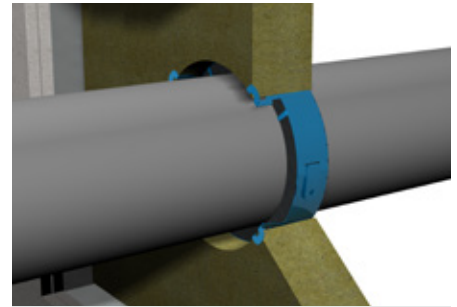
2. Installation guideline coated mineral wool penetration - built-in mounted



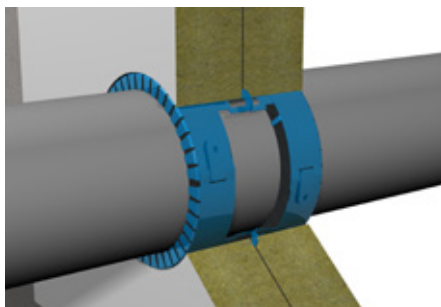
1. Clean around the opening and the penetration to ensure a smooth and dust free surface



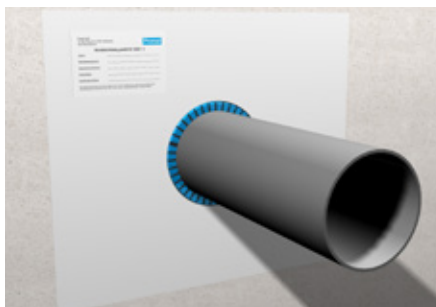
2. Straighten out collar fixing flanges and bend with a forceps as shown in the drawing for FC3 and FC6



3. Install the collar with the bended brackets inside and install the coated mineral wool boards



4. Install the collar and mineral wool board also on the other side

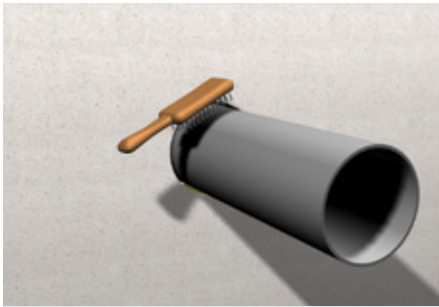


5. Finally fix the identification label in a suitable location

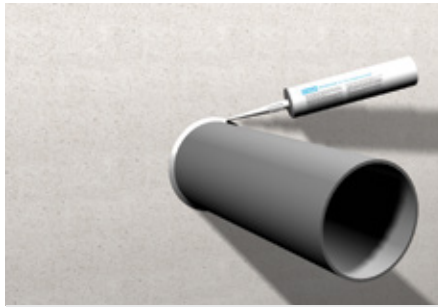
Note: For floor, insert an appropriate approved metal grid as foot traffic protection (below the mineral wool panels, where deemed necessary).

For more installation details refer to classification report.

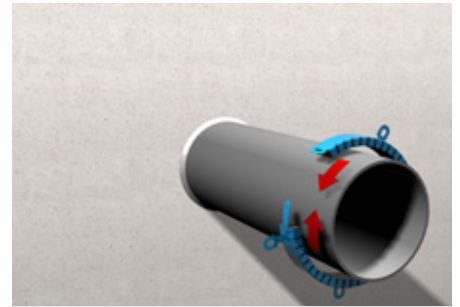
3. Installation guideline flexible wall and rigid substrate - surface mounted



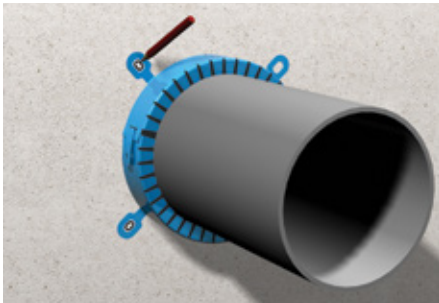
1. Clean around the opening and the penetration to ensure a smooth and dust free surface



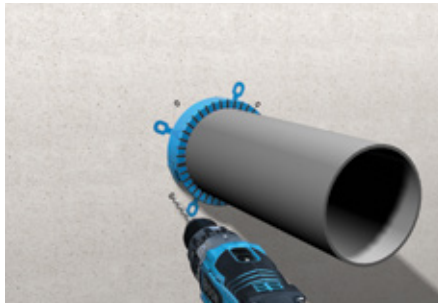
2. If necessary install acoustic insulator and fill gap (maximum 15 mm) between pipe and wall with mineral wool (melting point >1000 °C), plaster, mortar, concrete or sealant



3. Place the fire stopping collar around the pipe; Snap shut and bend the collar flange(s) back through 180°

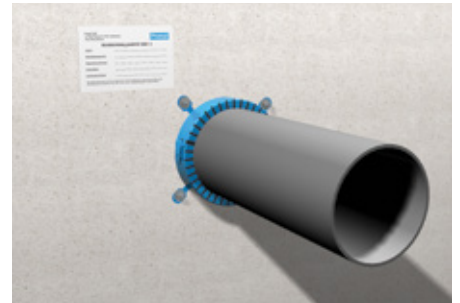


4. Mark drill-holes



5. Fix the pipe collar to the wall or floor on all fixing flanges

- Rigid substrate - drill a hole of 80 mm depth and for concrete with \varnothing 6 mm and for aerated concrete with \varnothing 4 or 5 mm and use screws from accessory bag;
- Flexible wall - drill a hole of \varnothing 6mm and use M6 threaded rods to fix collar with nuts and washers



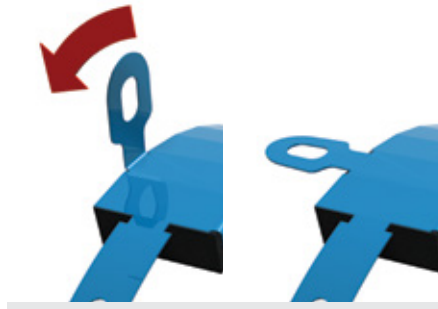
6. Finally fix the identification label in a suitable location

For more installation details refer to classification report.

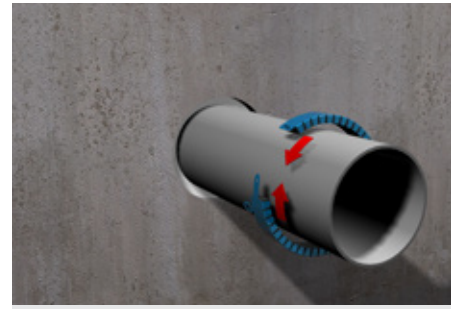
4. Installation guideline rigid substrate - built-in



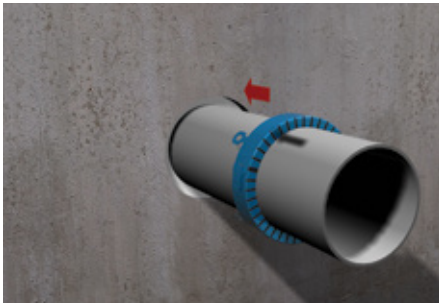
1. Clean around the opening and the penetration to ensure a smooth and dust free surface



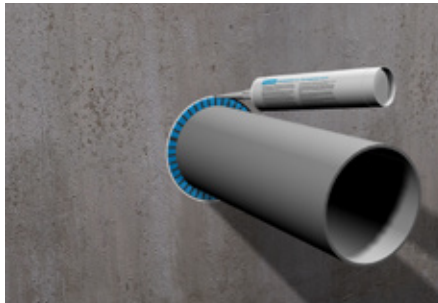
3. Straighten out collar fixing flanges



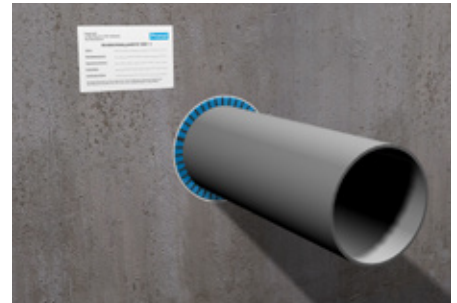
4. Place the fire stopping collar around the pipe with the fixing brackets towards the wall/floor; Snap shut and bend the collar flange(s) back through 180°



5. Slide the collar into the wall/floor until the closed metal end of the collar is either flush with or proud of the wall/floor; if necessary fix appropriate collar support in floors



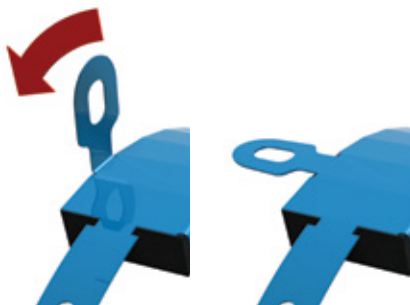
5. Fill the remaining gap with fire stopping mortar or sealant (covering of mortar or sealant is not permitted); remove collar support if used;



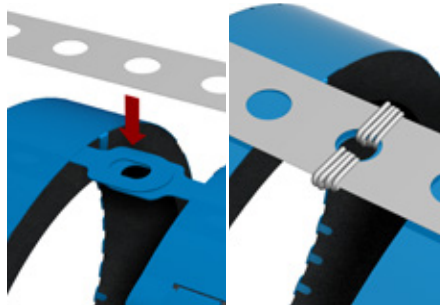
6. Finally fix the identification label in a suitable location

For more installation details refer to classification report.

5. Installation guideline flexible wall built-in min. 100 mm EI 120



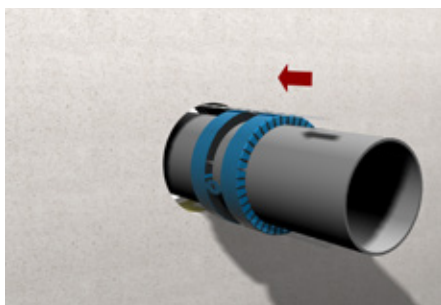
1. Bend back the fixing brackets by 90°;



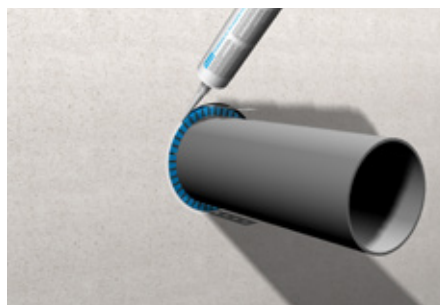
2. Fix all brackets together with the metal strip either with a wire, small screws, ...



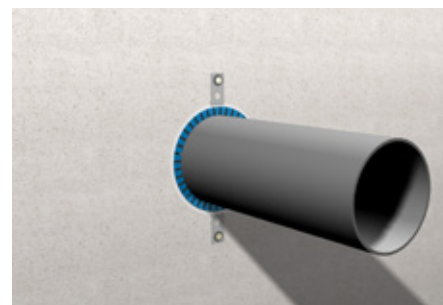
3. 32-63 mm only with one perforated metal strip; 75-125 mm two perforated metal strips opposite of each other;



4. Perforated metal strip has to be 50 mm longer than wall thickness and has to be visible on each side by 25 mm; insert these linked collars into wall;



5. Fill annular gap with mineral wool and PROMASEAL®-A in a minimum depth of 5 mm;



6. Bend perforated metal strip towards the wall and fix with drywall screws;



7. Finally fix the identification label in a suitable location;

For more installation details refer to classification report.

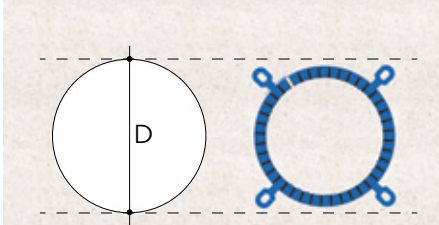
6. Installation guideline shaft walls EI 90 (2 x 20 mm board) - built-in

a) Shaft wall - fire only from outside

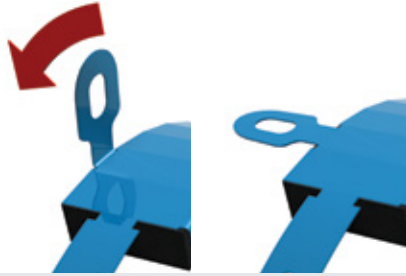
If the fire inside the shaft can be excluded, one-sided installation of PROMASTOP®-FC is possible;
Refer to point 2. of this installation guideline and fix with screws from accessory bag;

b) Shaft wall - fire from inside and outside

If the fire is possible inside and outside the shaft, then install as follows:



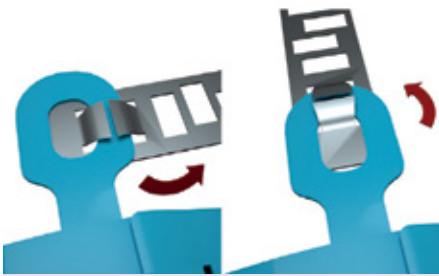
1. Annular gap - the core drilled diameter of the opening must be bigger than the outer diameter of the collar



2. Bend back the fixing brackets 90°;



3. Fix on SWC (shaft wall clip);



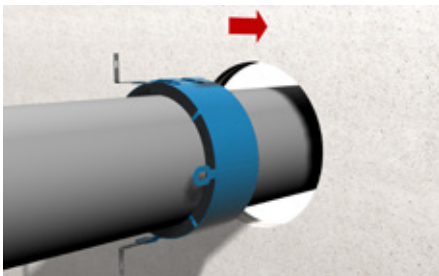
4. Turn the SWC 90°;



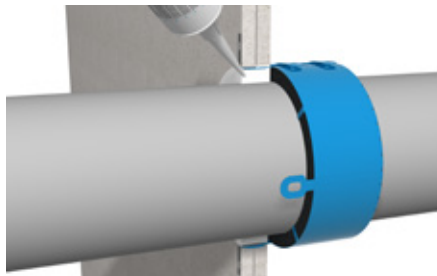
5. Bend the SWC 90°;



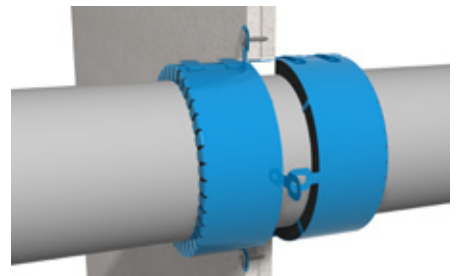
6. SWC have to be fixed on every second bracket or on more than 50 % (e.g. 3 clips for 5 brackets);



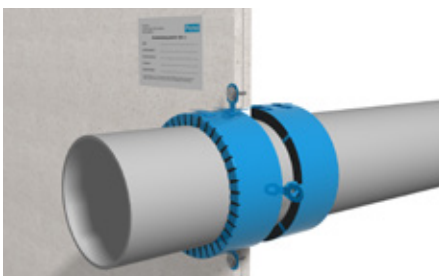
7. Insert the PROMASTOP®-FC6 with the fixing brackets towards you into the shaft wall



8. Close annular gap with PROMASEAL®-A or gypsum filler in complete depth of the shaft wall;



9. Fix with screws of accessory bag only where SWC has been fixed through clip and wall;



10. Finally fix the identification label in a suitable location

For more installation details refer to classification report.

7. Installation guideline angled pipe (rigid wall and floor)

For 45 °C angle use the following collars:

Pipe	Collar
50 mm	FC6/90
75 mm	FC6/125
90 mm	FC6/140
110 mm	FC6/160
125 mm	FC6/180
160 mm	FC6/225

For any other pipe diameters, use of acoustic insulation, or different angle please contact us;

For wall installation no SPC (sloped pipe clip) is required;

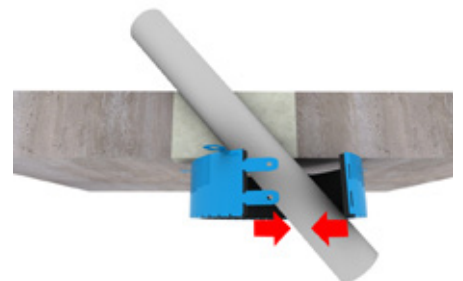
For floor installation fix a SPC on every fixing bracket of PROMASTOP®-FC6;



1. Clean around the opening and the penetration to ensure a smooth and dust free surface



2. Annular gap maximum width of 10 mm; fill the gap with mortar in full depth;



3. Place the fire stopping collar around the pipe; Snap shut and bend the collar flange back through 180°



4. For floor installation fix a SPC (sloped pipe clip) on every fixing bracket of PROMASTOP®-FC6

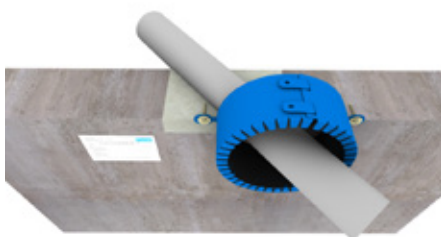


5. Mark drill-holes



6. Fix the pipe collar to the wall or floor on all fixing flanges

- Rigid substrate - drill a hole of 80 mm depth and for concrete with \varnothing 6 mm and for aerated concrete with \varnothing 4 or 5 mm and use screws from accessory bag;



7. Finally fix the identification label in a suitable location

For more installation details refer to classification report.

8. Installation guideline suspended ceiling

a) Suspended ceiling - fire only from downside

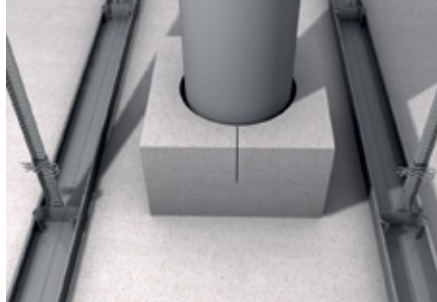
If the fire inside the can be excluded, one-sided installation of PROMASTOP®-FC is possible;

b) Suspended ceiling - fire from inside and downside

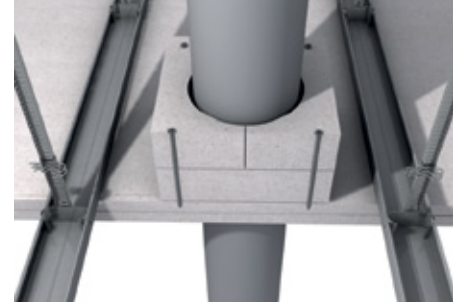
If the fire is possible inside and outside the then install as follows:



1. Clean around the opening and the penetration to ensure a smooth and dust free surface



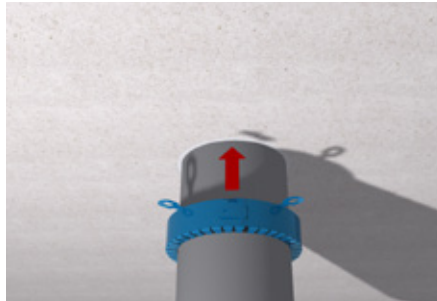
2. Increase the depth of the ceiling to 100 mm by use of 2 x 50 mm PROMATECT® boards. Apply these boards in two halves, cut a semi circle in each halve to match the diameter of the pipe. Rotate these halve boards 90° in each layer to avoid coincident joints between the halves in each layer



3. Use four 6 x 100 mm screws to fix the two layers of PROMATECT® boards to the ceiling lining



4. The annular gaps should not exceed 5 mm in width, fill the annular gap using PROMASEAL®-A to a minimum depth of 20 mm



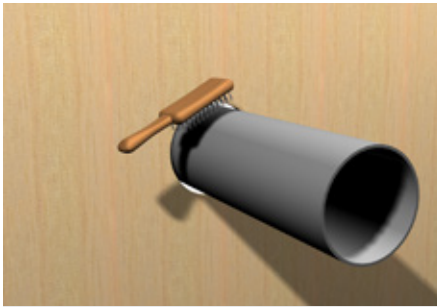
5. Fix the PROMASTOP®-FC collar to the underside of the ceiling using the supplied screws



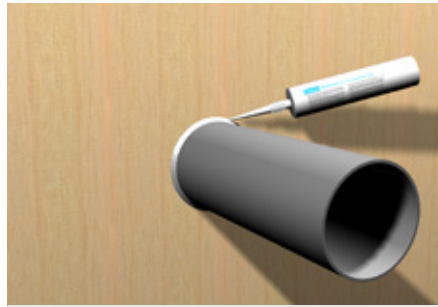
6. Finally fix the identification label in a suitable location

For more installation details refer to classification report.

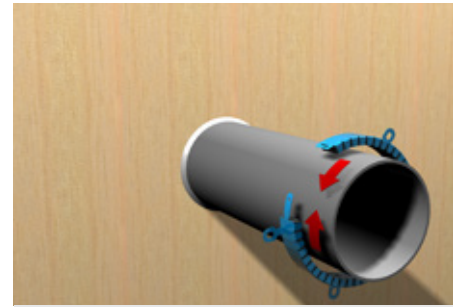
9. Installation guideline cross laminated timber



1. Clean around the opening and the penetration to ensure a smooth and dust free surface



2. If necessary install acoustic insulator and fill gap (maximum 15 mm) between pipe and wall with mineral wool (melting point >1000 °C) or sealant



3. Place the fire stopping collar around the pipe; Snap shut and bend the collar flange(s) back through 180°



4. Fix the pipe collar to the wall or floor on all fixing flanges

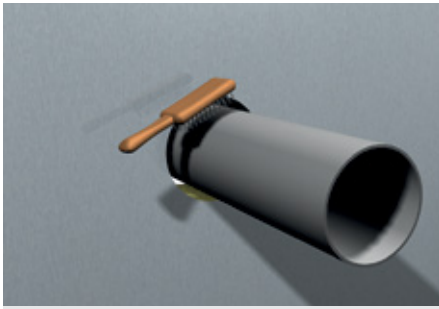
- Drill a hole of Ø 6 mm and use SPAX 100 mm length to fix collar with washers;



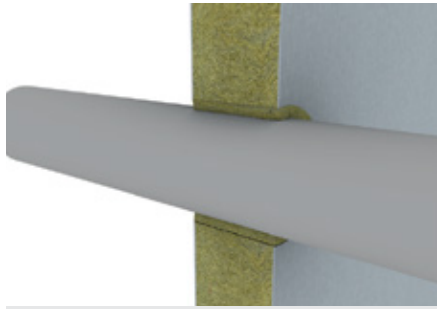
5. Finally fix the identification label in a suitable location

For more installation details refer to classification report.

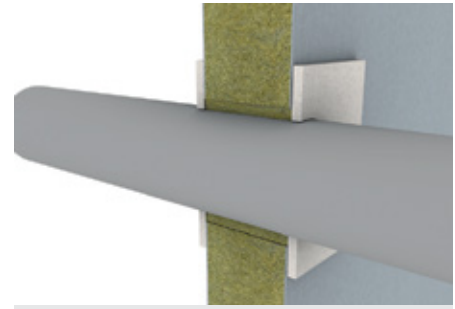
10. Installation guideline sandwich construction (Arcelor Mittal)



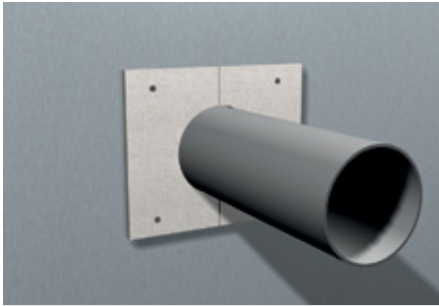
1. Clean around the opening and the penetration to ensure a smooth and dust free surface



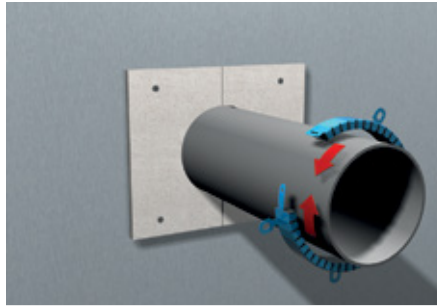
2. Fill annular gap of maximum 10 mm with mineral wool, 40 kg/m³ and compress it;



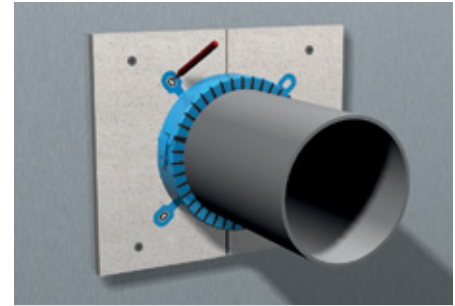
3. PROMATECT®-100 half-shells could already be pre-fixed; if not half-shells 50 mm width and 10 mm thickness have to be fixed around pipe



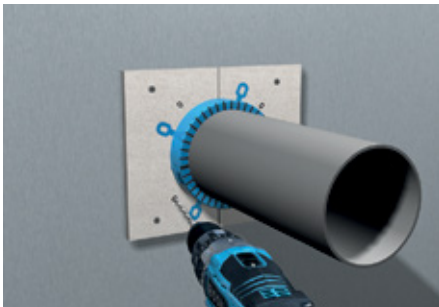
4. Install the half shells with drywall screws 3,5 x 25 mm and fix in the metal sheet of the panel



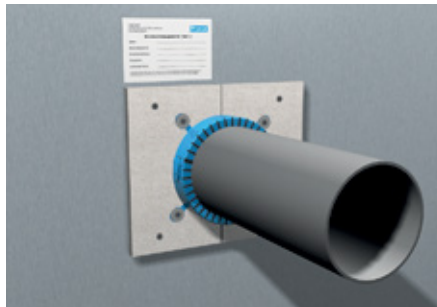
5. Place the fire stopping collar around the pipe; Snap shut and bend the collar flange(s) back through 180°



6. Mark drill-holes



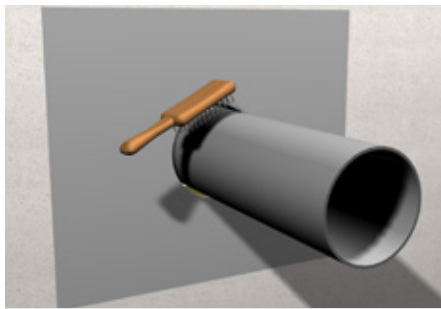
7. Pre-drill Ø 4 mm hole in PROMATECT® and metal sheet and fix collar with screws from assessor bag;



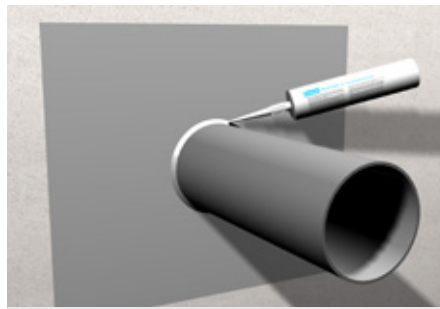
8. Finally fix the identification label in a suitable location

For more installation details refer to classification report.

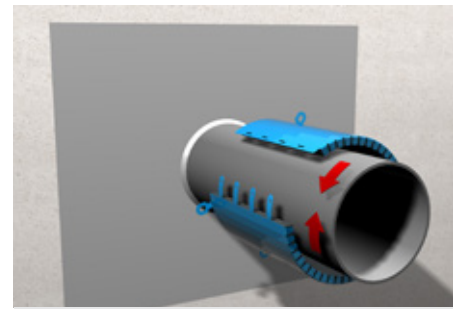
11. Installation guideline PROMASTOP®-FC 15



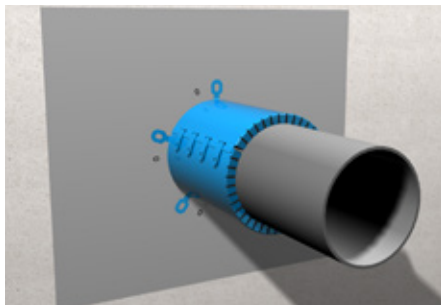
1. Clean around the opening and the penetration to ensure a smooth and dust free surface



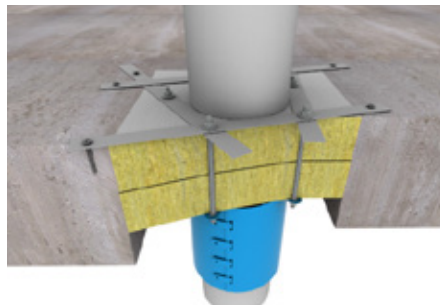
2. If necessary install acoustic insulator and fill gap (maximum 15 mm) between pipe and wall with mineral wool (melting point >1000 °C) and sealant



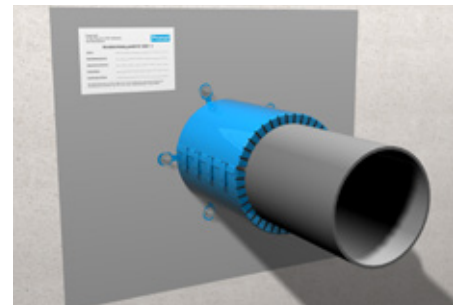
3. Place the fire stopping collar around the pipe; Snap shut and bend the collar flange(s) back through 180°



4. Fix the pipe collar to the wall or floor on all fixing flanges
a) Mineral wool penetration – press M6 threaded rod through the boards and use washers and nuts to fix collar on both sides of the wall;
b) Flexible wall/rigid substrate - refer to point 3. of this guideline



6. Rigid floor installation. Hang up the collar with a mounting rail 20 mm width and 20-30 cm overlapping to the rigid floor.



7. Finally fix the identification label in a suitable location

Note: For floor, insert an appropriate approved metal grid as foot traffic protection (below the mineral wool panels, where deemed necessary).

For more installation details refer to classification report.

Bulgaria

Etex Building Performance S.A.

Str. Vulturilor Nr. 98, 5th Floor
030857 Bucharest, Romania
M +359 878 81 51 05
E info.bg@promat-see.com
www.promat-see.com

Croatia, Bosnia and Herzegovina

Etex Building Performance

Promat d.o.o.

Kovinska 4a
10090 Zagreb
T +385 1 349 63 24
F +385 1 379 41 54
E info.hr@promat-see.com
www.promat-see.com

Greece

Etex Building Performance S.A.

Str. Vulturilor Nr. 98, 5th Floor
030857 Bucharest, Romania
T +40 31 224 01 00
F +40 31 224 01 01
E info@promat-see.com
www.promat-see.com

Hungary

Etex Building Performance

Creaton South-East Europe Kft.

Malomkő u. 7.1. emelet
2040 Budaörs
M +36 30 343 2572
M +36 30 455 1273
E info.hu@promat-see.com
www.promat-see.com

Kosovo, Albania

Etex Building Performance Sh.A.

Ulpiana, D-1, HY-4 Nr.2
10000 Prishtina
T +383 38 553 407
M +381 64 61 39 763
M +377 44 120 671
E info@promat-see.com
www.promat-see.com

Romania

Etex Building Performance S.A.

Str. Vulturilor Nr. 98, 5th Floor
030857 Bucharest
T +40 31 224 01 00
F +40 31 224 01 01
E info.ro@promat-see.com
www.promat-see.com

Serbia, Macedonia, Montenegro

Etex Building Performance d.o.o.

Vojvode Putnika 79
21208 Sremska Kamenica
T +381 21 210 10 90
M +381 63 625 426
M +381 63 510 720
E info.rs@promat-see.com
www.promat-see.com

Slovakia

Etex Building Performance

EBM Co. s.r.o.

Štúrova 155
949 01 Nitra
M +421 915 936 126
E info.sk@promat-see.com
www.promat-see.com

Slovenia

Etex Building Performance

Promat d.o.o.

Kidričeva 56b
4220 Škofja Loka
T +386 4 51 51 451
F +385 4 51 51 450
E info.si@promat-see.com
www.promat-see.com