

Armafix®
Ecolight

THE ECONOMICAL & ECOLOGICAL
LIGHTWEIGHT PIPE SUPPORT



- Prevents thermal bridging
- Recycled PET
- Matching to Armacell insulation

Technical Data - Armafix Ecolight

Brief description	Pipe support for refrigeration and air-conditioning installation to prevent condensation at fixing points. PET bearing segment with FEF on the outer part for connection with insulation material. Cladded by PVC foil. All dimensions are matching Armacell nominal wall thickness insulation.
Material type	PET-foam bearing segments, Armacell insulation on the outer part for connection. Outside cladding made of PVC foil.
Colour	Black
Applications	Thermally non-interacting mounting aid for tubes in refrigeration and air-conditioning applications, which are to be insulated with Armacell elastomeric foam.
Remarks	When used in installation with intermittent temperatures, thermal length extensions may cause inherent pressure in the installation; this needs to be considered in the overall insulation construction. Application temperature above 10 °C.

Property	Value/Assessment	Test ^{*1}	Super- vision ^{*2}	Special Remark
Temperature Range				
Temperature Range ¹	max. service temperature	+ 80 °C	○	Tested acc. to EN 14706, EN 14707 and EN 14304
	min. service temperature	0 °C		
Thermal Conductivity				
Thermal Conductivity	ϑ_m	23 °C	○	Declared acc. to EN ISO 13787 Tested acc. to EN 12667 EN ISO 8497
	PET Foam $\lambda \leq$	0,034 W/(m · K)		
Fire performance				
Reaction to fire	Euroclass E The fire classification in combination with Armaflex and pipe hangers may better then	D 5901	○	Classified acc. to EN 13501-1 Tested acc. to EN 13823 EN ISO 11925-2
Acoustic Performance				
Reduction of structure-borne sound transmission	According to used insulation layer in clamp / pipe fastener			According to DIN 4109
Other technical features				
Density	95 - 105 kg/m ³ (pipe bearing segments)			
Storage & Shelf life	Products with self adhesive closures to be installed within 1 year.			Can be stored in dry, clean rooms at normal relative humidity (50% to 70%) and ambient temperature (0 °C – 35 °C).

1. For temperatures below 0 °C please contact our Customer Service Center to request for the corresponding technical information.

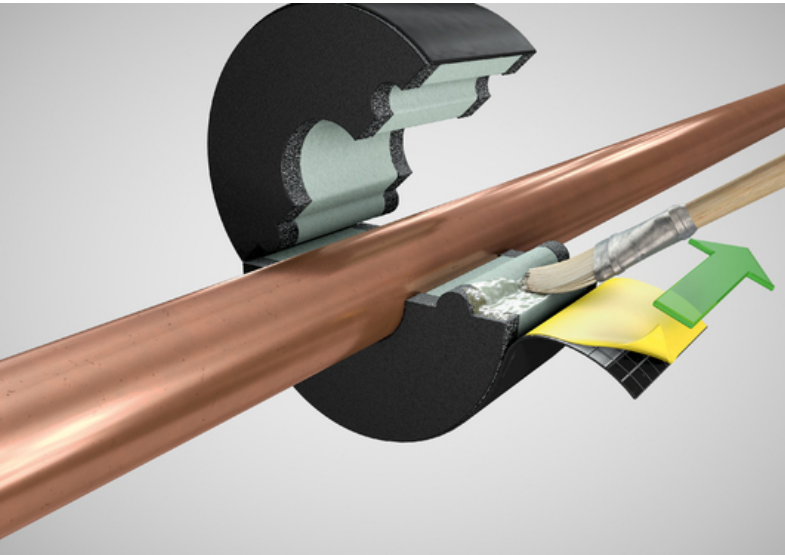
*1 Further documents such as test certificates, approvals and the like can be requested using the registration number given.

*2 ●: Official supervision by independent institutes and /or test authorities
○: Own in-factory quality monitoring

All data and technical information are based on results achieved under typical application conditions. Recipients of this information should, in their own interest and responsibility, promptly clarify with us to determine whether or not the data and information apply to the intended application area. Installation instructions are available in our Armaflex installation manual. Please consult our Customer Service Center before insulating stainless steels. Adhesive Armaflex 520 must be used to guarantee proper installation. For some refrigerants, the discharge temperature may exceed +110 °C; please consult our Customer Service Center for further information. For outside use, Armaflex should be protected within 3 days, e.g. with Armafinish 99 Paint or Arma-Chek covering.

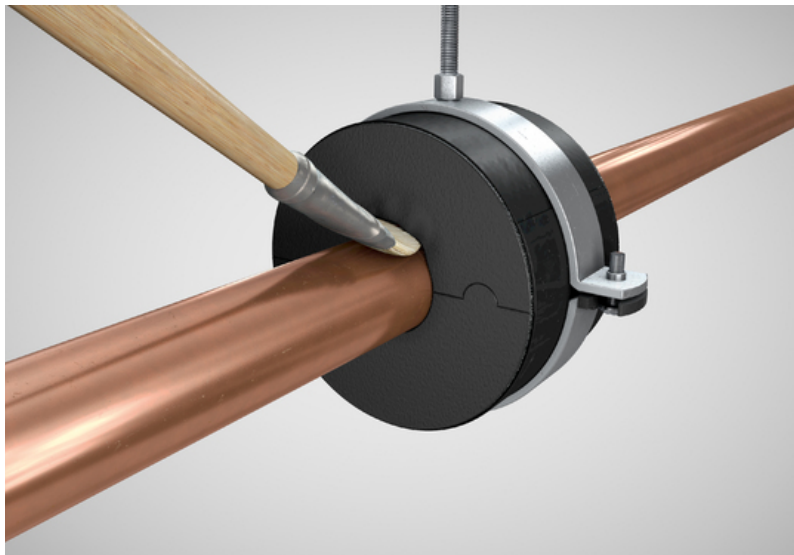
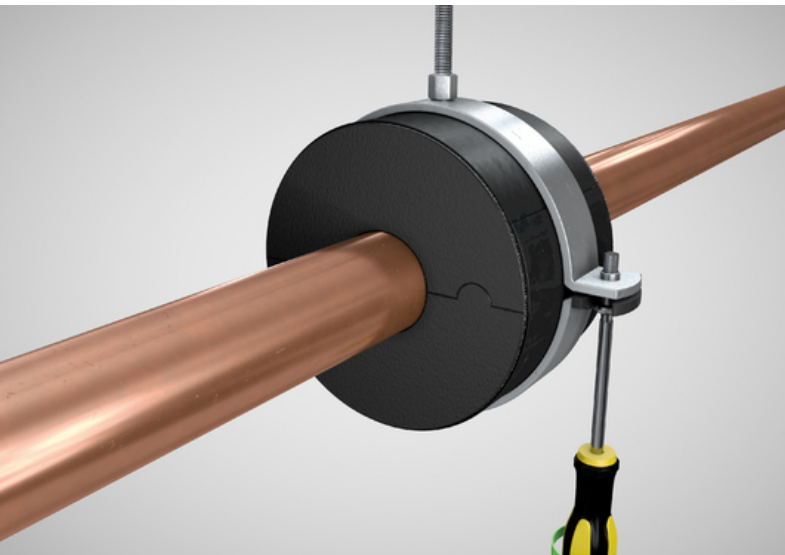
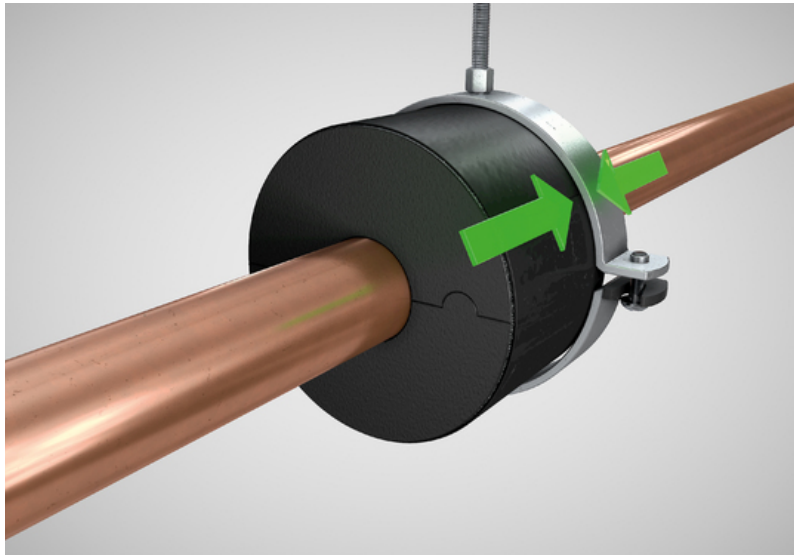
APPLICATION INSTRUCTIONS

1) Install Armafix Ecolight supports around the pipe, seal the surface using Armaflex adhesive and remove the backing strip on the overlapping PVC covering
2) Close the seam, applying firm pressure. Push the pipe support into the middle of the Armafix clamp



3) Tighten the screws

4) Before installing the Armaflex tube, glue the edges of the pipe support to the pipe



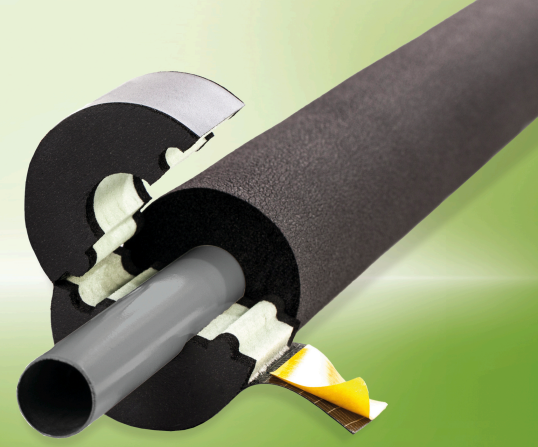
5) Wet seal the butt joints using Armaflex adhesive. Install the Armaflex insulation either side of the support and ensure that the pipe insulation is installed under slight compression.



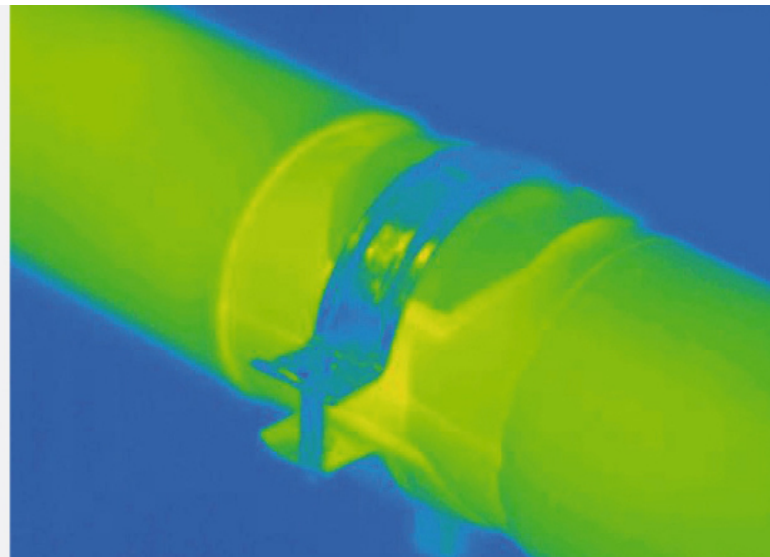
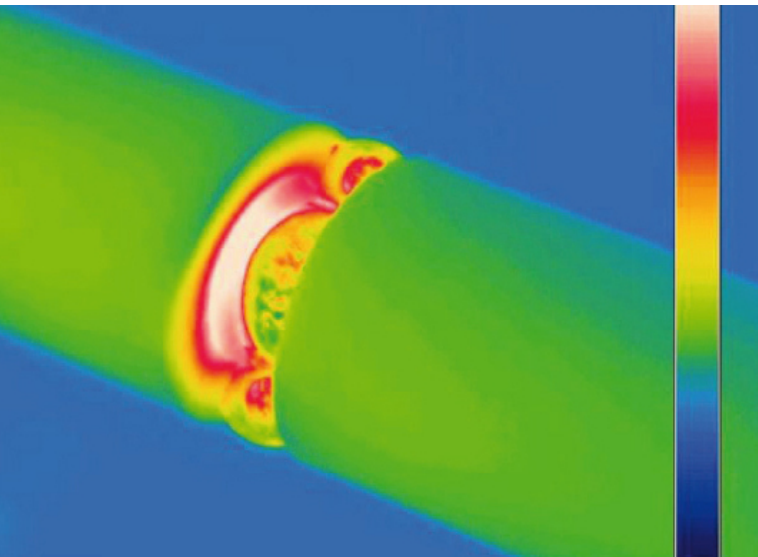
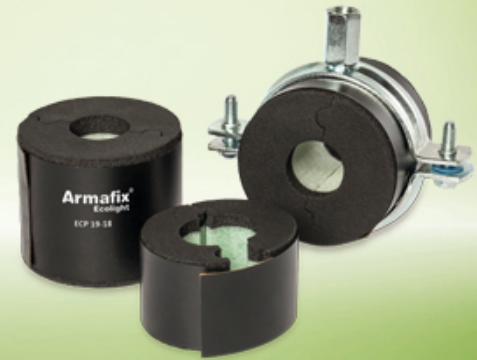
ARMAFIX ECOLIGHT

Armafix Ecolight is made out of 100% recycled PET bottles, with all production scrap re-used to make new PET blocks. PET can also be completely recycled at the end of service life.

PET therefore has excellent environmental credentials, requiring over 60% less energy for its production than equivalent PUR products and accounting for over 80% less CO₂ emissions.



- Armafix Ecolight supports are extremely light weight, combined with a good compressive strength and density of 95-105 kg m³
- The range matches Armaflex tube nominal wall thicknesses of 13, 19, 25 and 32mm (40mm thick supports can also be made to order) and are available with easy fit steel clamps.
- The PET load bearing supports are 36mm wide + 6mm width of Armaflex insulation for vapour sealing bonding to adjoining tubes.
- The supports have an outer black PVC foil with self-seal closing.



Un-insulated pipe brackets present a weak point in insulation systems where thermal bridging can cause condensation, energy losses, corrosion and expensive secondary damage to occur. Thermally isolating the pipe from the fixing clamps using Armafix Ecolight insulated supports provides a long-term solution for condensation control.

Armafix Ecolight pipe supports and clamps



Pipe max. Outside-Ø [mm]	Max. permissible distance [m]	13,0 mm insulation thickness		Clamps 13,0 mm	
		Code	Pieces/carton	Code	Pieces/carton
6	2,00	ECP-13X006	25	PCX 025/030	25
10	2,00	ECP-13X010	25	PCX 025/030	25
12	2,00	ECP-13X012	25	PCX 025/030	25
15	2,00	ECP-13X015	25	PCX 033/037	25
18	2,00	ECP-13X018	25	PCX 033/037	25
22	2,00	ECP-13X022	25	PCX 042/046	25
28	3,00	ECP-13X028	25	PCX 047/052	25
32	3,00	ECP-13X032 ●	25	PCX 047/052	25
35	3,00	ECP-13X035	25	PCX 054/058	25
42	3,00	ECP-13X042	25	PCX 063/068	25
48	4,00	ECP-13X048	20	PCX 068/073	10
54	4,00	ECP-13X054	20	PCX 068/073	10
60	4,00	ECP-13X060	20	PCX 082/085	10
64	4,00	ECP-13X064	20	PCX 082/085	10
76	5,00	ECP-13X076	20	PCX 092/099	10
89	6,00	ECP-13X089	15	PCX 108/112	10
102	6,00	ECP-13X102 ●	15	PCX 125/130	10
114	6,00	ECP-13X114	15	PCX 133/137	10
125	6,00	ECP-13X125 ●	10		
133	6,00	ECP-13X133 ●	10		
140	6,00	ECP-13X140 ●	10		
160	6,00	ECP-13X160 ●	10		
168	6,00	ECP-13X168 ●	5		
219	6,00	ECP-13X219 ●	5		
273	6,00	ECP-13X273 ●	5		
324	6,00	ECP-13X324 ●	5		

Pipe max. Outside-Ø [mm]	Max. permissible distance [m]	19,0 mm insulation thickness		Clamps 19,0 mm	
		Code	Pieces/carton	Code	Pieces/carton
6	2,00	ECP-19X006 ●	25	PCX 038/041	25
10	2,00	ECP-19X010	25	PCX 038/041	25
12	2,00	ECP-19X012	25	PCX 038/041	25
15	2,00	ECP-19X015	25	PCX 047/052	25
18	2,00	ECP-19X018	25	PCX 047/052	25
22	2,00	ECP-19X022	25	PCX 054/058	25
28	3,00	ECP-19X028	25	PCX 059/063	25
32	3,00	ECP-19X032 ●	25	PCX 059/063	25
35	3,00	ECP-19X035	25	PCX 063/068	25
42	3,00	ECP-19X042	20	PCX 068/073	10
48	4,00	ECP-19X048	20	PCX 072/080	10
54	4,00	ECP-19X054	20	PCX 082/085	10
60	4,00	ECP-19X060	20	PCX 088/092	10
64	4,00	ECP-19X064	20	PCX 088/092	10
76	5,00	ECP-19X076	20	PCX 099/103	10
89	6,00	ECP-19X089	15	PCX 112/118	10
102	6,00	ECP-19X102 ●	15	PCX 133/137	10
114	6,00	ECP-19X114	15	PCX 137/142	10
125	6,00	ECP-19X125 ●	10		
133	6,00	ECP-19X133 ●	10		
140	6,00	ECP-19X140 ●	10		
160	6,00	ECP-19X160 ●	10		
168	6,00	ECP-19X168 ●	5		
219	6,00	ECP-19X219 ●	5		
273	6,00	ECP-19X273 ●	5		
324	6,00	ECP-19X324 ●	5		

Armafix Ecolight pipe supports and clamps



Pipe max. Outside-Ø [mm]	Max. permissible distance [m]	25,0 mm insulation thickness		Clamps 25,0 mm	
		Code	Pieces/carton	Code	Pieces/carton
6	2,00	ECP-25X006 ●	25	PCX 047/052	25
10	2,00	ECP-25X010 ●	25	PCX 054/058	25
12	2,00	ECP-25X012 ●	25	PCX 054/058	25
15	2,00	ECP-25X015	25	PCX 059/063	25
18	2,00	ECP-25X018	25	PCX 059/063	25
22	2,00	ECP-25X022	25	PCX 063/068	25
28	3,00	ECP-25X028	20	PCX 068/073	10
32	3,00	ECP-25X032 ●	20	PCX 068/073	10
35	3,00	ECP-25X035	20	PCX 072/080	10
42	3,00	ECP-25X042	20	PCX 082/085	10
48	4,00	ECP-25X048	20	PCX 088/092	10
54	4,00	ECP-25X054	20	PCX 092/099	10
60	4,00	ECP-25X060	20	PCX 099/103	10
64	4,00	ECP-25X064 ●	20	PCX 099/103	10
76	5,00	ECP-25X076	20	PCX 112/118	10
89	6,00	ECP-25X089	15	PCX 133/137	10
102	6,00	ECP-25X102 ●	15	PCX 137/142	10
114	6,00	ECP-25X114 ●	15	PCX 159/164	10
125	6,00	ECP-25X125 ●	10		
133	6,00	ECP-25X133 ●	10		
140	6,00	ECP-25X140 ●	10		
160	6,00	ECP-25X160 ●	10		
168	6,00	ECP-25X168 ●	5		
219	6,00	ECP-25X219 ●	5		
273	6,00	ECP-25X273 ●	5		
324	6,00	ECP-25X324 ●	5		

Pipe max. Outside-Ø [mm]	Max. permissible distance [m]	32,0 mm insulation thickness		Clamps 32,0 mm	
		Code	Pieces/carton	Code	Pieces/carton
6	2,00	ECP-32X006 ●	25	PCX 063/068	25
10	2,00	ECP-32X010 ●	25	PCX 063/068	25
12	2,00	ECP-32X012 ●	25	PCX 063/068	25
15	2,00	ECP-32X015 ●	20	PCX 072/080	10
18	2,00	ECP-32X018	20	PCX 072/080	10
22	2,00	ECP-32X022	20	PCX 072/080	10
28	3,00	ECP-32X028	20	PCX 088/092	10
32	3,00	ECP-32X032 ●	20	PCX 092/099	10
35	3,00	ECP-32X035	20	PCX 092/099	10
42	3,00	ECP-32X042	20	PCX 099/103	10
48	4,00	ECP-32X048	20	PCX 108/112	10
54	4,00	ECP-32X054	20	PCX 112/118	10
60	4,00	ECP-32X060	20	PCX 112/118	10
64	4,00	ECP-32X064	20	PCX 125/130	10
76	5,00	ECP-32X076	20	PCX 133/137	10
89	6,00	ECP-32X089	15	PCX 145/152	10
102	6,00	ECP-32X102 ●	15	PCX 159/164	10
114	6,00	ECP-32X114 ●	15	PCX 168/173	10
125	6,00	ECP-32X125 ●	10		
133	6,00	ECP-32X133 ●	10		
140	6,00	ECP-32X140 ●	15	PCX 199	10
160	6,00	ECP-32X160 ●	10		
168	6,00	ECP-32X168 ●	15	PCX 222	10
219	6,00	ECP-32X219 ●	5		
273	6,00	ECP-32X273 ●	5		
324	6,00	ECP-32X324 ●	5		

Armafix Ecolight pipe supports and clamps



Pipe max. Outside-Ø [mm]	Max. permissible distance [m]	40,0 mm insulation thickness		Clamps 40,0 mm	
		Code	Pieces/carton	Code	Pieces/carton
6	2,00	ECP-40X006 ●	20	PCX 082/085	10
10	2,00	ECP-40X010 ●	20	PCX 082/085	10
12	2,00	ECP-40X012 ●	20	PCX 082/085	10
15	2,00	ECP-40X015 ●	20	PCX 088/092	10
18	2,00	ECP-40X018 ●	20	PCX 092/099	10
22	2,00	ECP-40X022 ●	20	PCX 092/099	10
28	3,00	ECP-40X028 ●	20	PCX 099/103	10
32	3,00	ECP-40X032 ●	20	PCX 108/112	10
35	3,00	ECP-40X035 ●	20	PCX 112/118	10
42	3,00	ECP-40X042 ●	20	PCX 112/118	10
48	4,00	ECP-40X048 ●	20	PCX 125/130	10
54	4,00	ECP-40X054 ●	20	PCX 133/137	10
60	4,00	ECP-40X060 ●	20	PCX 133/137	10
64	4,00	ECP-40X064 ●	20	PCX 137/142	10
76	5,00	ECP-40X076 ●	20	PCX 145/152	10
89	6,00	ECP-40X089 ●	15	PCX 164/169	10
102	6,00	ECP-40X102 ●	15	PCX 168/173	10
114	6,00	ECP-40X114 ●	15	PCX 199	10

● Item not in stock. Delivery on request. [MTO]

