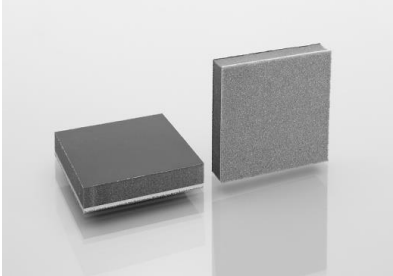


## INSULATION/ABSORPTION

### TRAMICELL 7.25 – combination layer



TRAMICELL	Thickness	Weight
7.25 PU B	25 mm	7 kg/m <sup>2</sup>
PU = PU cover layer B = black		

**Product description** Tramicell 7.25 is a 3mm polyester foam base with a heavy flexible PVC mat combined with ABSORBEL sound-absorbing foam with black PU cover layer.

#### Properties

- High sound-insulating value
- Flame-extinguishing in accordance with UTAC ST 18502
- Also good sound absorption due to the combination with ABSORBEL, resulting in the sound level being Reduced in the space where the material is applied
- Easy to cut with a (Stanley) knife or to saw with a band saw
- Coverlayer is resistant to water, oil, petrol, hydrocarbons, solvents et cetera
- And prevents liquids and vapors from penetrating into the foam
- Also resistant to ageing
- Temperature-resistant from -30 to +90 ° C

#### Application

Automotive industry  
Ship and yacht building  
Mechanical engineering  
Housings

#### Processing

Bond on the thin side with TEROKAL 2444 contact adhesive (approx. 300 g/m<sup>2</sup>), or with BARYVIBRO 607 2-component adhesive (approx. 1.0 kg/m<sup>2</sup>)  
We recommend ABSORBEL TAPE PU to mask off the seams between the mats

#### Dimensions

1400 x 1000 mm sheet  
Weight and thickness, see table above  
Die-cut, tailor-made parts available upon request

DISCLAIMER  
De omschreven toepassingen en aanbevelingen zijn zo correct mogelijk weergegeven maar zijn vrijblijvend en bieden geen garanties. Bij twijfel over toepassing of verwerking zelf een test uitvoeren of contact met ons opnemen. We behouden ons het recht om zonder kennisgeving vooraf, productgegevens te wijzigen.

## SOUND INSULATION CURVE

Insulation material                    TRAMICELL  
Surface                                    1-mm steel sheet  
Measured in accordance with        DIN 52210

